



Honeysuckle Cottage, Mordiford, Herefordshire, HR1 4LR

£240,000



A charming, Border Oak three bedroom end terrace cottage with an array of character features, spacious living accommodation and rear garden with side access. Situated in a popular village location just three miles from Hereford. The property is offered with NO CHAIN.

Introduction

An charming end of terrace three bedroom family home located in the popular village of Mordiford just 4 miles east of the Cathedral City of Hereford. With off road parking, charming features set in spacious, well presented accommodation comprising: entrance hall, living room, kitchen/ breakfast room, bathroom and three bedrooms.

dining room is fitted with a matching range of wall and base units with an integrated eye level electric cooker and grill plus a hob, plumbing for a washing machine and space for a fridge freezer, there are windows to the front and rear, a door to the garden and space for a table and chairs. To the first floor are three bedrooms all with wooden beams;

Gardens and parking

The front of the property is enclosed by fencing and a path leads to the rear garden. The rear garden is tiered with a patio area and lawn to the side. There is off road parking available at the property.

Property description

From an enclosed porch a door leads into the entrance hallway where there are stairs to the first floor, an under stairs cupboards and doors to the reception room and kitchen. The living room feels light and airy with a cottage feel with windows to the front and rear, an attractive full height brick fire place and ceiling beams. The country style kitchen /

Location

Summary

- End terrace cottage
- 3 bedrooms, living room
- Kitchen/ breakfast room
- Parking, rear garden
- Character features
- NO ONWARD CHAIN

Call Hereford 01432 266007



Honeysuckle Cottage Mordiford Herefordshire HR1 4LR

Summary

- End terrace cottage
- 3 bedrooms, living room
- Kitchen/ breakfast room
- Parking, rear garden
- Character features
- NO ONWARD CHAIN

Call Hereford 01432 266007

There are an excellent range of local amenities which include Post Office, Church, Primary School, Public House and lovely rural walks to include the Wye Valley walk and Mordiford Loop. The nearby village of Fownhope has a further range of amenities including Wye Leisure; an excellent health and fitness club with swimming pools, sauna, gym and restaurant. Easy access to Worcester, Ledbury, Ross and M50 and M5 motorway connections.

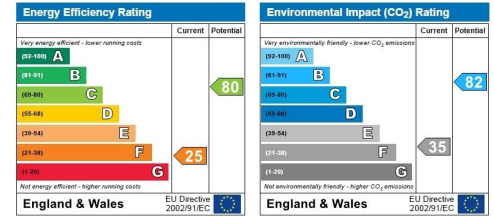
Services

Mains electricity, water and drainage.

Directions

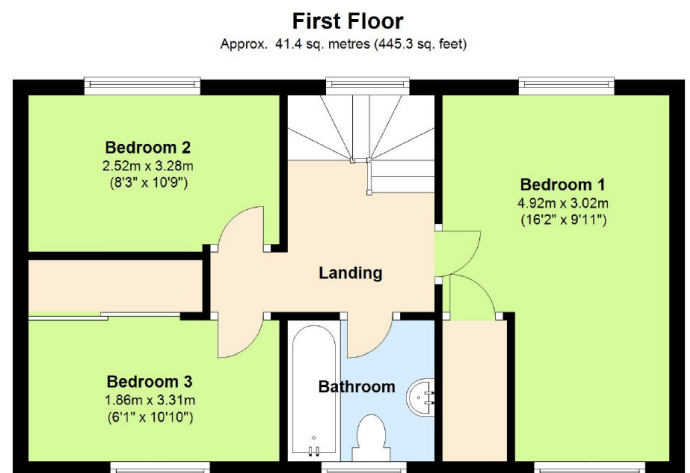
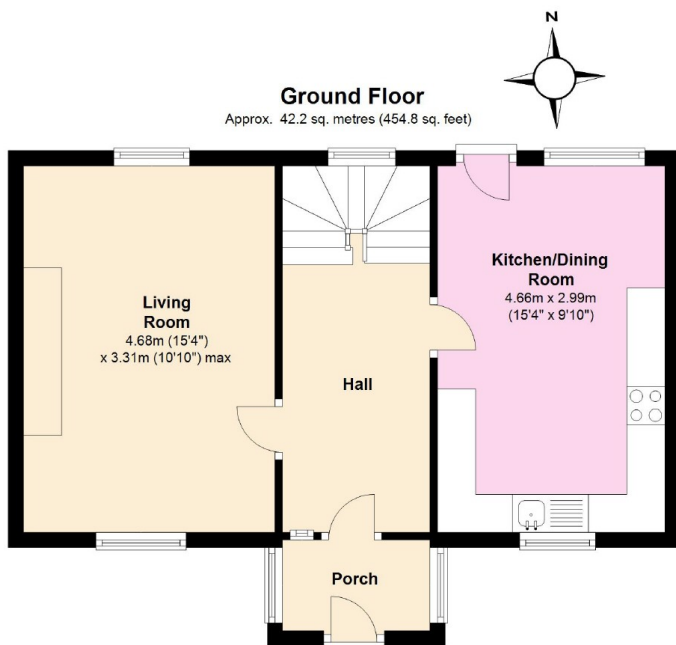
Leave Hereford East on Hampton Park Road B4224. Go over the river bridge and into Mordiford, bear left at the first junction after The Moon Inn, signposted for Woolhope and the property can be found shortly after on the left hand side.

Energy Performance Graphs



CONSUMER PROTECTION FROM UNFAIR TRADING REGULATIONS 2008 (CPR) We endeavour to ensure that the details contained in our brochure are correct through making detailed enquiries of the owner but they are not guaranteed. The agents have not tested any appliance, equipment, fixture, fitting or service and have not seen the title deeds to confirm tenure. All measurements are quoted to the nearest 1/10 metre. All liability in negligence of otherwise for any loss arising from the use of these particulars is hereby excluded.
MONEY LAUNDERING REGULATIONS Require prospective purchasers to produce two original ID documents prior to any offer being accepted by the owners.
* Rightmove Intel - HR1, HR2, HR3, HR4, HR5, HR6, SY7, SY8 LD7, LD8

Floor plans - not to scale



Total area: approx. 83.6 sq. metres (900.1 sq. feet)