

ALBANY PARK  
existing adjacent flat block  
across 3no.off floors

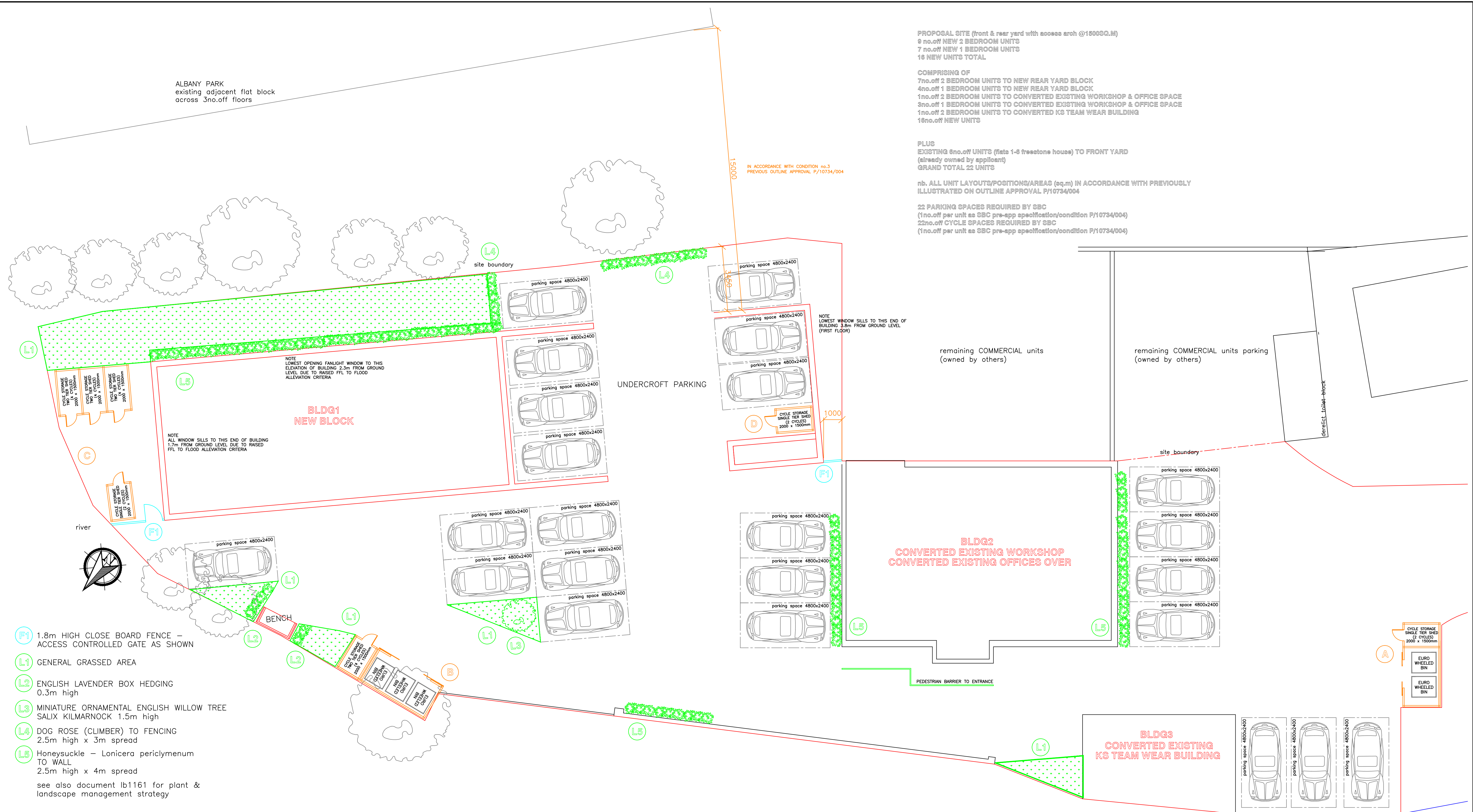
PROPOSAL SITE (front & rear yard with access arch @15000G.M)  
6 no.off NEW 2 BEDROOM UNITS  
7 no.off NEW 1 BEDROOM UNITS  
13 NEW UNITS TOTAL

COMPRISING OF  
7no.off 2 BEDROOM UNITS TO NEW REAR YARD BLOCK  
4no.off 1 BEDROOM UNITS TO NEW REAR YARD BLOCK  
1no.off 2 BEDROOM UNITS TO CONVERTED EXISTING WORKSHOP & OFFICE SPACE  
3no.off 1 BEDROOM UNITS TO CONVERTED EXISTING WORKSHOP & OFFICE SPACE  
1no.off 2 BEDROOM UNITS TO CONVERTED K5 TEAM WEAR BUILDING  
13no.off NEW UNITS

PLUS  
EXISTING 6no.off UNITS (flats 1-6 freestone house) TO FRONT YARD  
(already owned by applicant)  
GRAND TOTAL 23 UNITS

nb. ALL UNIT LAYOUTS/POSITIONS/AREAS (sq.m) IN ACCORDANCE WITH PREVIOUSLY ILLUSTRATED ON OUTLINE APPROVAL P/10734/004

22 PARKING SPACES REQUIRED BY SBC  
(1no.off per unit as SBC pre-app specification/condition P/10734/004)  
22no.off CYCLE SPACES REQUIRED BY SBC  
(1no.off per unit as SBC pre-app specification/condition P/10734/004)



- (F1) 1.8m HIGH CLOSE BOARD FENCE - ACCESS CONTROLLED GATE AS SHOWN
  - (L1) GENERAL GRASSED AREA
  - (L2) ENGLISH LAVENDER BOX HEDGING 0.3m high
  - (L3) MINIATURE ORNAMENTAL ENGLISH WILLOW TREE SALIX KILMARNOCK 1.5m high
  - (L4) DOG ROSE (CLIMBER) TO FENCING 2.5m high x 3m spread
  - (L5) Honeysuckle - Lonicera periclymenum TO WALL 2.5m high x 4m spread
- see also document lb1161 for plant & landscape management strategy

REFUSE & RE-CYCLING PROVISION IN ACCORDANCE WITH SBC REFUSE & RECYCLING STORAGE FOR NEW DWELLINGS 2017

RESIDUAL WASTE 97litres/flat or unit x22 units = 2134 litres this would be accommodated with the provision of 2no.off 1100litre EUROBINS accommodated with the provision of 1 at both areas A & B

RECYCLING WASTE 53litres/flat or unit x22 units = 1166 litres this would be accommodated with the provision of 2no.off 1100litre EUROBINS accommodated with the provision of 1 at both areas A & B  
nb. area B will provide an additional 1100litre EUROBIN FOR RECYCLING (area B) as we move towards an increase & promotion in recycling (future proofing)

SBC BIN DRAG GUIDELINES IN CONSULTATION WITH SBC LPA SATISFIED BY THE APPOINTMENT OF PRIVATE REFUSE CONTRACTORS UNDER THE CONTINUED SITE MANAGEMENT OF THE SITE - TO COLLECT EUROBINS & RETURN TO COMPOUNDS ON COLLECTION DAYS

CONSULTATION WITH SBC LPA REACHED AGREEMENT OF 1no.off SECURE CYCLING PARKING PROVISION FOR EACH UNIT - 22 TOTAL

- (A) FALCO UK Ltd (or similar) BESPOKE FALCOLOK SECURE STORE INTERMEDIATE SEPARATION 5m long x2m wide ACCOMODATING 2no.off CYCLES 1no.off RECYCLING EUROBIN (1100litres) 1no.off RESIDUAL EUROBIN (1100litres)
- (B) FALCO UK Ltd (or similar) BESPOKE FALCOLOK SECURE STORE 5.5m long x2m wide ACCOMODATING 4no.off CYCLES FALCOLEVEL ECO 2 TIER RACK WITH GAS ASSISTED TOP TIER RACK LIFT 2no.off RECYCLING EUROBIN (1100litres) 1no.off RESIDUAL EUROBIN (1100litres)

- (C) FALCO UK Ltd (or similar) BESPOKE FALCOLOK SECURE STORE INTERMEDIATE SEPARATION 6.5m long x2.5m wide ACCOMODATING 12no.off CYCLES FALCOLEVEL ECO 2 TIER RACK WITH GAS ASSISTED TOP TIER RACK LIFT PLUS 2m long x1.5m wide ACCOMODATING 2no.off CYCLES
- (D) FALCO UK Ltd (or similar) BESPOKE FALCOLOK SECURE STORE 2m long x1.5m wide ACCOMODATING 2no.off CYCLES

PROPOSED/ILLUSTRATIVE SITE PLAN (FRONT/REAR YARD) LAYOUT

PROPOSE SITE PLAN & FACILITIES LAYOUT FRONT & REAR YARDS

provisional issue issued for DESIGN DISCUSSION & PRELIMINARY TENDER subject to change or refusal

A	preliminary issue	09.04.20
client - p h jackson		

© **LIMEBLUE**innovation  
post office buildings  
freestone yard, park street  
coinbrook SL3 0HT  
telephone 01753 681315  
fax 01753 681929  
www.limeblueinno.co.uk  
enquiries@limeblueinno.co.uk

freestone yard, park street  
coinbrook, slough SL3 0HT  
PROPOSED DEVELOPMENT  
NEW UNIT PLUS REFURBISHED EXISTING UNITS  
A1 sheet  
drg no. rpf1138sht1a(P).dwg of x



scale 1:100 dimensions in millimetres  
DO NOT scale print for constructional purpose if in doubt ASK  
nb. all design, dimensions, compliance with statutory legislation, licenses, permissions, approvals & agreements to remain the sole responsibility of client