

The Rectory, Lower Westwood, Bradford-On-Avon, Wiltshire, BA15 2AF



A former Rectory with great potential, situated within a generous plot in the pretty Wiltshire village of Lower Westwood. It is believed to date back to the 1960's when it was built by local building contractors for the diocese of Salisbury.

£650,000

The detached property is surrounded by a generous plot including stone wall to the front with driveway entrance, leading up to the house offering parking for several vehicles and a single garage. Private lawn gardens surround the property and to the front is a very pleasant outlook toward the Westbury White Horse. The property itself is arranged across two floors and the spacious accommodation boasts three reception rooms, two with fireplaces as well as a kitchen, utility room and cloakroom on the ground floor. On the first floor, all centered around a bright landing are four double bedrooms plus a bathroom and separate W.C.

Westwood village is just over a mile from the town of Bradford-on-Avon which has many amenities including independent shops and cafe's as well as a train station and supermarket. Freshford train station is also c.2 miles from the property. Lower Westwood is home to the National Trust property, Westwood Manor as well as St Mary the Virgin Church, both of which are adjacent to The Rectory. There is also a Primary School, pub, village store and a post office within the village.

EPC Grade - C.



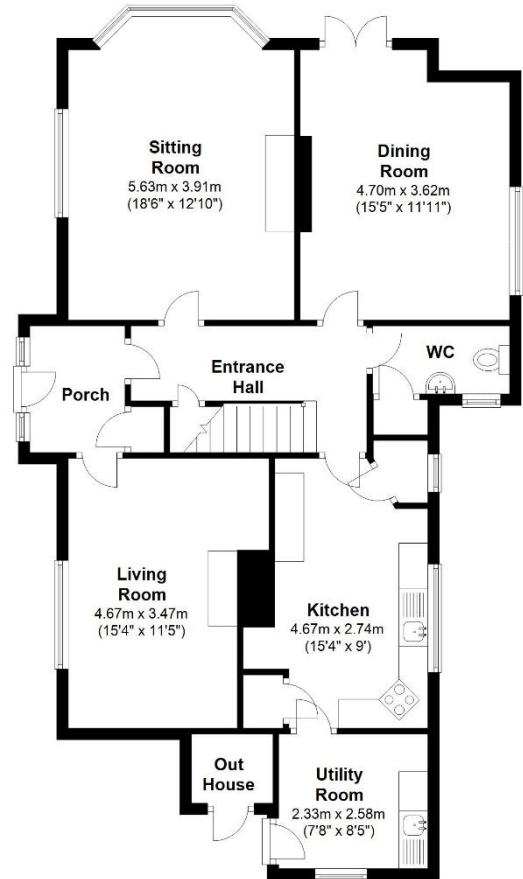
Important Notice

Hunter French, their clients and any joint agents give notice that:

1. They have no authority to make or give any representation or warranties in relation to the property. These particulars do not form part of an offer or contract and must not be relied upon as statements or representations of fact.
2. Any areas, measurements or distances are approximate. The text, photographs and plans are for guidance only and are not necessarily comprehensive. It should not be assumed that the property has all necessary planning, building regulation or other consents and Hunters French have not tested any services, equipment or facilities. Purchasers must satisfy themselves by inspection or otherwise

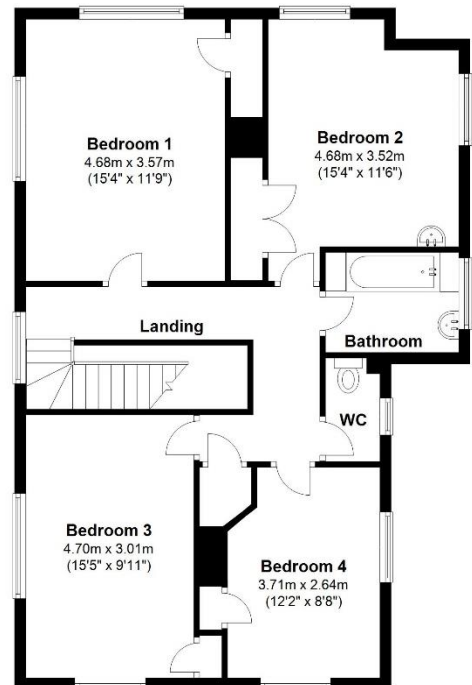
Ground Floor

Approx. 90.7 sq. metres (975.8 sq. feet)



First Floor

Approx. 82.3 sq. metres (885.9 sq. feet)



Total area: approx. 173.0 sq. metres (1861.7 sq. feet)

Bath City Office
6 Balustrade
London Road Bath
BA1 6QA

Corsham Office
3 High Street
Corsham
SN13 0ES

Devizes Office
12 St John's Street
Devizes
SN10 1BD

Frome Office
19 Paul Street
Frome
BA11 1DT