

# STRAND ON THE GREEN

CHISWICK • W4



# STRAND ON THE GREEN

CHISWICK • W4

***An outstanding five bedroom landmark house on Strand on the Green in Chiswick.***

---

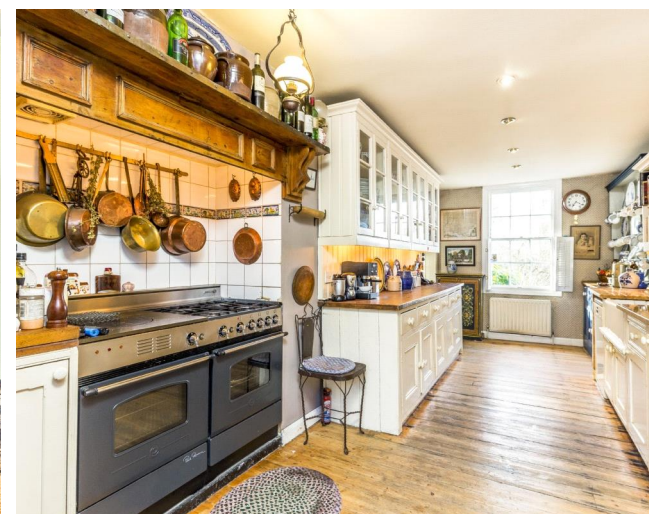
Five Bedrooms • Three Bathrooms • WC  
Double Reception Room • Kitchen • Dining Room  
Study • Conservatory • Snug • Front and Rear Gardens

---

Central London 6.7 miles  
Heathrow Airport 8.7 miles  
Kew Bridge Train Station 0.2 miles

(All distances are approximate)

These particulars are intended only as a guide and must not be relied upon as statements of fact. Your attention is drawn to the Important Notice on the last page of the text.





## Strand on the Green, Chiswick W4

Set behind a private walled garden in an elevated position affords this historic gem with expansive river views on what is arguably one of the prettiest stretches of London's riverside. This substantial house has been extended through history from an original building in the 17th century. A charming courtyard garden to the front leads up to the house with space for off street parking in addition to the garage. The entrance hall has steps down to a snug. Returning to the ground floor on the right is a double reception room with river views to the front and double doors onto the rear garden. To the left is a formal dining hall which leads onto the hand built bespoke kitchen. An addition to the kitchen is a charming conservatory maximising the outlook over the garden with a wall of French doors that open the room completely onto the garden. The first floor offers a master bedroom suite and three further bedrooms with two bathrooms. An additional annex to the house can be self-contained or accessed from the main house and provides a bedroom, reception room and bathroom over two floors.



**Schools:** Strand on the Green School 0.1 miles, The Falcon School for Boys 0.4 mile, Grove Park Primary School 0.5 miles, Chiswick Preparatory School 0.6 miles, Heathfield House School 0.7 miles.



**Walking:** Strand on the Green Recreation Ground 0.2 miles, Kew Gardens 0.4 miles, Turnham Green Park 0.9 miles, Gunnersbury Park 1 mile, Chiswick House & Gardens 1.2 miles, Dukes Meadows 1.6 miles.



**Leisure:** Brentford Fountain Leisure Centre 0.2 miles, Virgin Active 0.9 miles, Roko Health Club 1.1 miles, Rocks Lane Multi Sports Centre 1.4 miles.



**Train:** Kew Bridge Train Station 0.2 miles, Gunnersbury Station (District Line and Overground) 0.4 miles.



**Air:** Heathrow Airport is 8.7 miles, Gatwick Airport is 32.6 miles.

## Location

Strand on the Green is a beautiful stretch of the river Thames between Kew Bridge and Grove Park on the north side of the river. A tow path allows for river walks with an array of riverside pubs and restaurants. The commuter is served by both Kew Bridge mainline station offering services to London Waterloo and Gunnersbury Underground station served by the district line.

## Local Authority

London Borough of Hounslow.

T 020 8583 2000. [www.hounslow.gov.uk](http://www.hounslow.gov.uk)

## Tenure

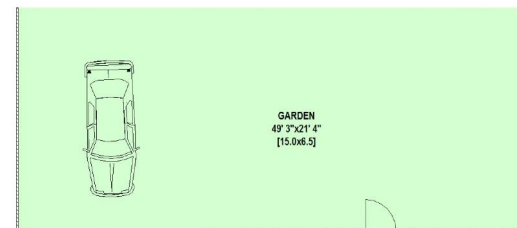
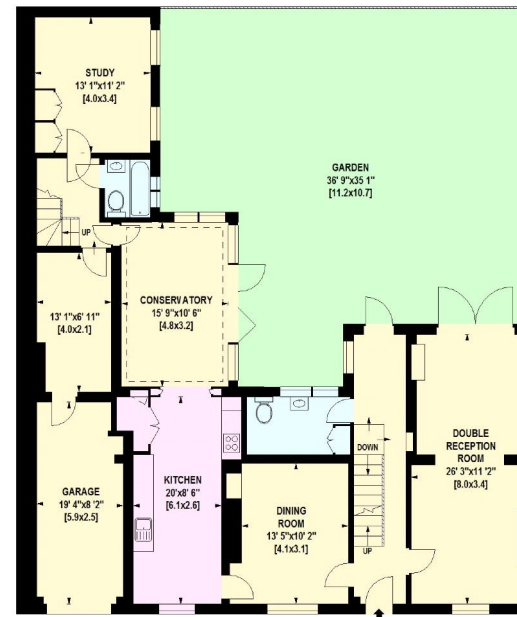
Freehold.

## Guide Price

Price on application.

## Viewing

Strictly by appointment with Knight Frank.

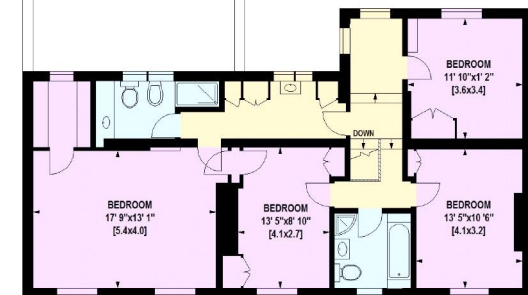
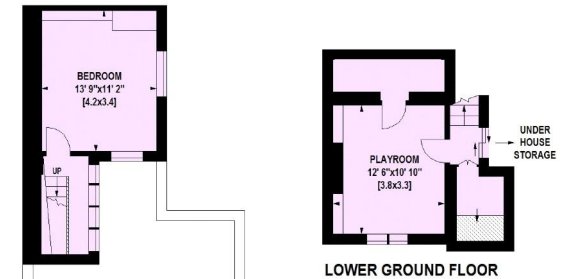


GROUND FLOOR

## STRAND ON THE GREEN, W4

Gross Internal Area: 283 Sq. metres  
(Including Garage) 3046 Sq. feet

Under 1.5m head height



FIRST FLOOR

Floor Plan produced for Knight Frank by Mays Floorplans © Tel 020 3397 4594

Illustration for identification purposes only, not to scale.

All measurements and areas are approximate, and include wardrobes and window bays where appropriate. This Floorplan has been prepared in accordance with the current edition of the RICS code of measuring practice.