



stuart  
thomas

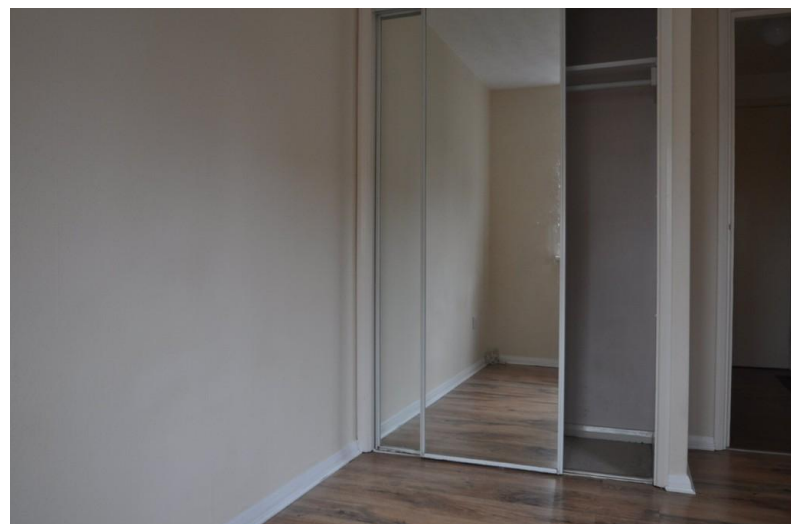
## Saxon Court

Benfleet, SS7 4BY

- CLOSE TO LOCAL SHOPS
- EASY ACCESS TO A13 AND A127
- MODERN FITTED KITCHEN WITH APPLIANCES

**£650 pcm**

EPC Rating '73'



LOUNGE 13' 0" x 9' 01" (3.96m x 2.77m) Double aspect double glazed windows to the front and side. Electric storage heater. Carpet. TV Point. We understand from the vendors that there is communal Sky available payable monthly. Entrance to kitchen.

KITCHEN 8' 01" x 7' 02" (2.46m x 2.18m) Range of white gloss base and eye level units with black granite effect work surfaces over. Stainless steel sink. Modern black and white tiled splashbacks. Free standing fridge freezer and washing machine. Stainless steel oven and hob. Black gloss tiled floor.

HALL Security entry phone. Cupboard. Storage heater with timer. Laminate wood effect flooring. Alarm fitted to front door for extra security.

BEDROOM 8' 07 plus wardrobe depth" x 7' 10" (2.62m x 2.39m) Built in double wardrobe with mirror sliding doors. Double aspect double glazed windows to side and rear. Storage heater with timer. Wood effect laminate flooring.

BATHROOM Bath with glass shower screen and electric shower over. Pedestal hand wash basin. Close coupled WC. Partially tiled. Vinyl tiled effect flooring.

GENERAL Permit allocated parking for one car as well as plenty of visitor parking. Visitor permit included.

