



CORFE HOUSE

BINGHAM AVENUE - EVENING HILL

CONTEMPORARY GEORGIAN LUXURY

The finest of homes. The finest of locations.

Inspired by homes from the Georgian period, Corfe House blends classical themes with contemporary design, creating a landmark property within one of the finest roads on the south coast.

Shrouded by mature trees, the home nestles in the very heart of prestigious Evening Hill; just a short stroll from the stunningly beautiful Poole Harbour and the award winning beaches at Sandbanks.

Built without compromise to the highest of standards, Corfe House is a family home; a home created to endure time and shifts in architectural trends. A home crafted to gain character. A home where memories grow.





Flagstone tiles guide you through the double height atrium to the oak staircase and beyond

From the moment you enter Corfe House, its refined architectural features strike an impressive chord.




CORFE HOUSE

Each room boasts a 9-feet high ceiling, encapsulating the grand scale and ambience of fine Georgian architecture



Traditional
brass blends
seamlessly
with the
finest of
avant-garde
kitchen
appliances



The luxurious kitchen offers an enviable space
for entertaining family and friends



Utility room

Exquisitely designed
en-suites compliment each
of the four double bedrooms



Master bedroom - ensuite





Master bedroom

Georgian
inspired
elegance.

Contemporary
refinement.

Some of Corfe House's features...


Underfloor heating throughout.


Individual thermostats to each room.


Solid concrete floors throughout.


Solid stone exterior detailing.


Large double garage and workshop.



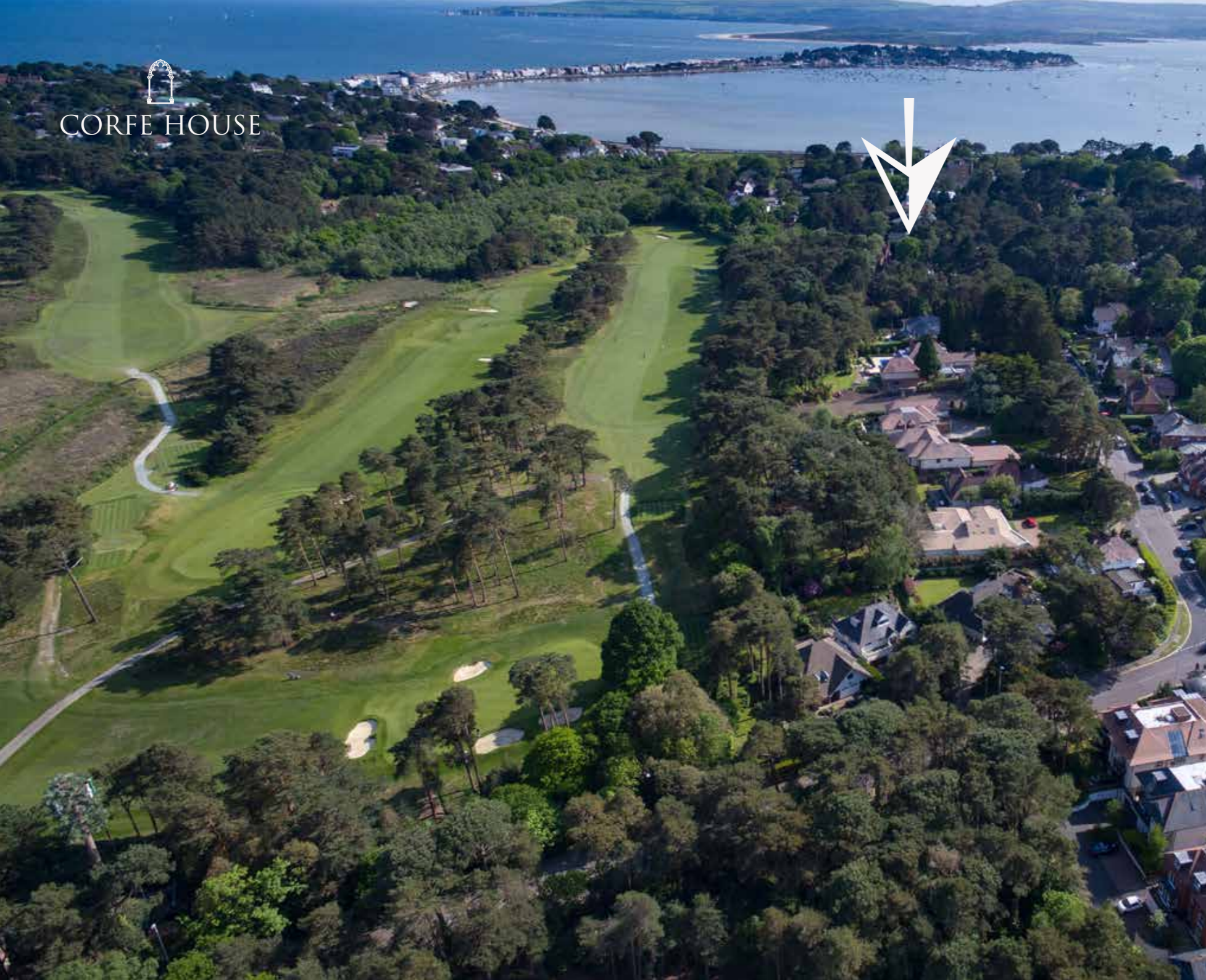
Master bedroom - dressing room



Traditional construction methods ensures Corfe House will endure time



Garage passageway



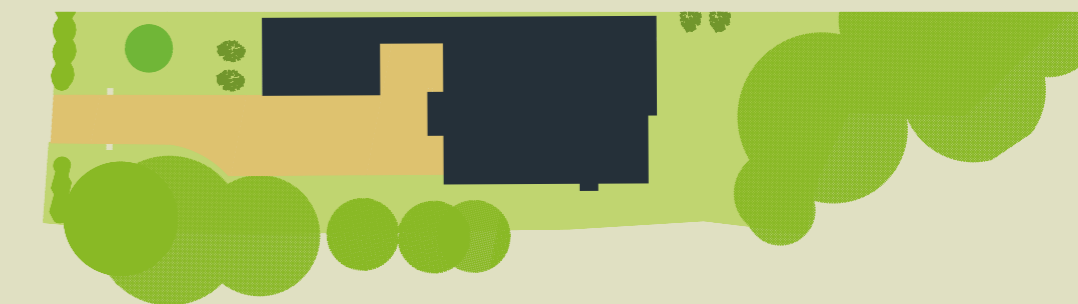
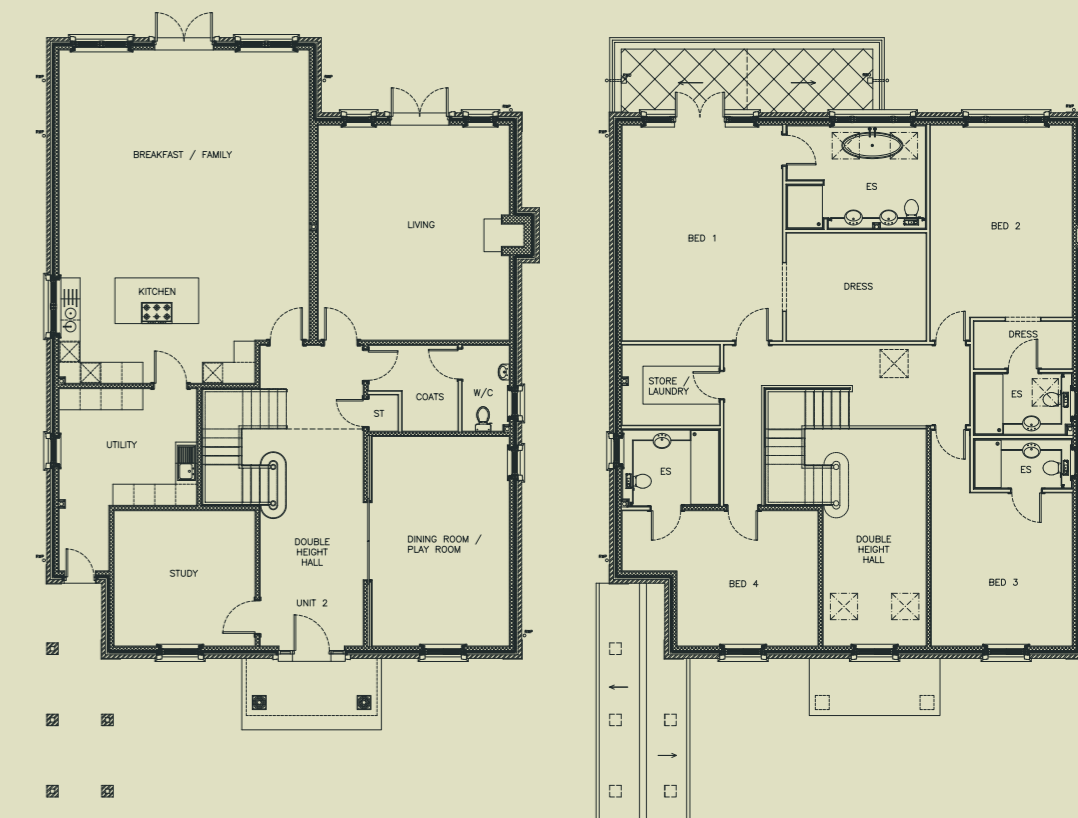

CORFE HOUSE

Peaceful.

Nestled in established grounds,
the landscaped garden offers a
tranquil refuge.

✿
Approximate Gross Internal Area
393.1 sq/m - 4,231 sq/ft

✿
Premier 10-year warranty



■ Corfe House
■ Driveway
■ Lawn
■ Trees & shrubbery

For illustration purposes only



BrackenGroup
Building developers est.1979

info@brackengroup.co.uk