

Craigie

'The Old Schoolhouse' 4 Main Street



c o r u m

www.corumproperty.co.uk



A truly stunning former schoolhouse providing exceptionally stylish and spacious family sized accommodation over two levels with extensive country views, gardens, two driveways and detached double garage.

■ Property Description

Built around 1874 as the original schoolhouse to Craigie village the property has been converted into a wonderful family home with a bespoke level of fixture and finish throughout including beamed ceilings, oak fitted kitchen with 'Rayburn' cooker, Belfast sink and useful utility room off, oak doors, floors and staircase, luxury sanitary ware, 2 multi-burner stoves and neutral decoration. The property enjoys a lovely position in the centre of the village within generous gardens and backing onto rolling farmland.

In summary the accommodation extends to, on the ground floor, a vestibule, hallway, sitting room with vaulted ceiling, formal lounge with doors to the garden, dining sized kitchen with useful utility room off, double bedroom and three piece shower room. Upstairs there is a superb galleried landing and three further bedrooms including one with a balcony providing extensive views. Completing the accommodation is a four piece bathroom with freestanding bath.

Externally the gardens are predominantly laid to lawn with patio area and two driveways providing extensive parking and one culminating in the detached double garage.





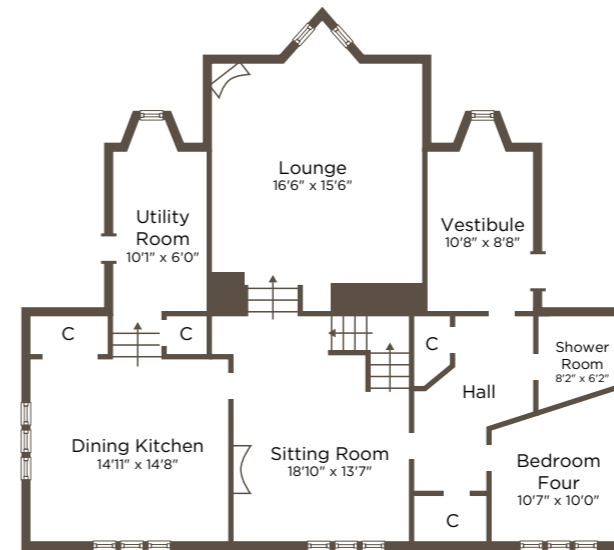
Local Area

Craigie is a charming rural village with a strong sense of community and an interesting history including the ruins of Craigie Castle, once home to the Wallace family. The A77/M77 motorway is within close proximity and provides direct links with Glasgow City Centre and Prestwick International Airport which provides flights throughout Europe. Ayrshire is renowned for Championship Golf at Royal Troon and Turnberry both being within a few miles of Craigie Village. Ayr, Prestwick and Troon are the three nearest major coastal towns and are all within easy reach.

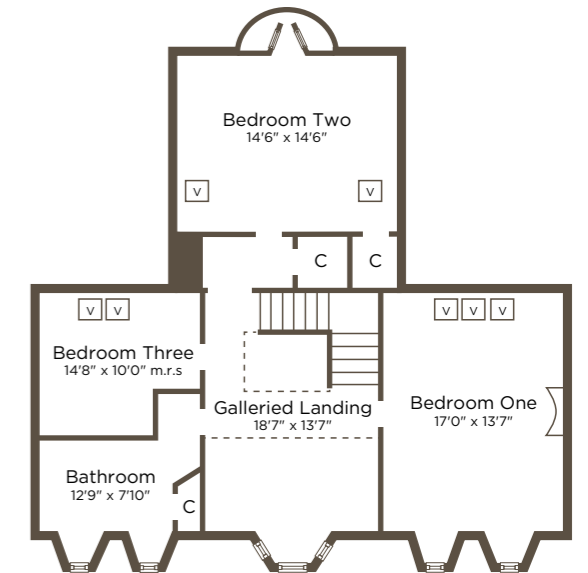
Directions

From Ayr travel north on the A77 heading towards Glasgow. At Symington turn right onto the A730 following signs for Tarbolton. Continue for about 1.3 miles turning left where signposted to Craigie. Continue on the minor road for about 0.8 miles to reach the crossroads. Proceed across the crossroads and into the village where The Old School House is on your right.

Ground Floor



First Floor



TRO822. EER Band D.

All measurements and distances are approximate. Floorplans are for illustration purposes and may not be to scale.

Craigie

'The Old Schoolhouse' 4 Main Street, Craigie, KA1 5LH



- For more information please contact our Troon Office.

29 Portland Street
Troon KA10 6AA
Tel: 01292 310 010
Fax: 01292 310 019
troon@corumproperty.co.uk
www.corumproperty.co.uk



A member of



We believe these details to be correct however their accuracy is not guaranteed and they do not form any part of a contract. Fixtures and fittings are not included unless specified in the schedule. Photographs are produced for general information and it must not be inferred that any item is included for sale with the property. Corum is a trading name of The Corum Partnership, 20 Blythwood Square, Glasgow G2 4GB.



c o r u m