





- No Onward Chain
- Two Double Bedrooms
- Third Floor Apartment
- Open Plan
- En-Suite
- Viewing Recommended



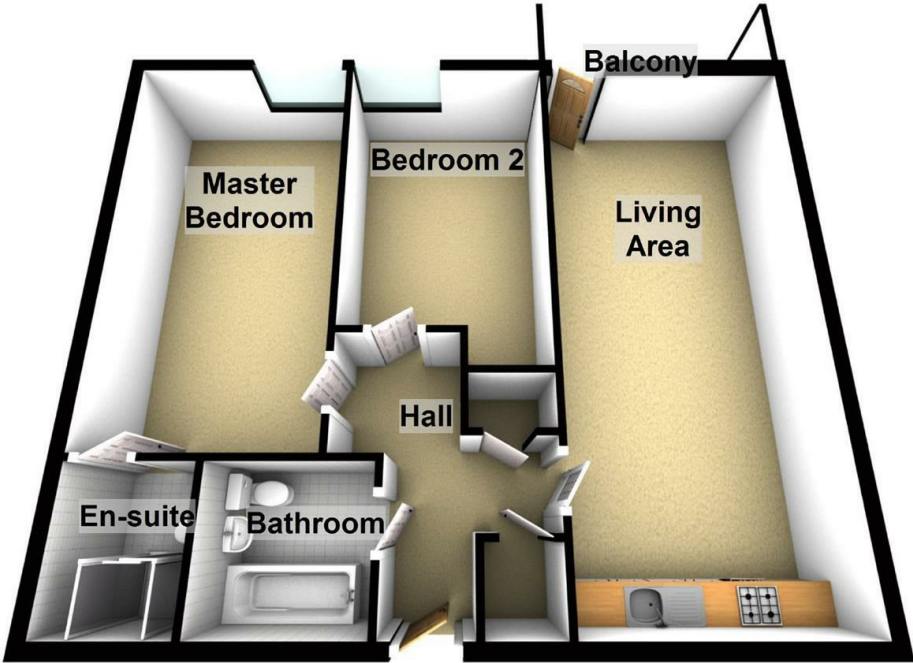


*** CITY LIVING WITH NO ONWARD CHAIN *** This is a superbly presented third floor, two bedroom luxury apartment situated within minutes walk of Newcastle Quayside and a short distance from Newcastle City Centre. The accommodation comprises in brief:- Secure communal entrance with lift to all floors, entrance hallway with door to open plan lounge/kitchen diner, two double bedrooms (the master with en-suite), bathroom and balcony with views of the River Tyne. Allocated parking space in secure car park. This will appeal to both professionals with easy access to the city centre and investors for high end rental market.



Lounge/Kitchen Diner 24'6" x 11'3" (7.46 x 3.42)
Master Bedroom 19'8" x 9'8" (6.00 x 2.94)
Bedroom Two 17'9" x 9'6" (5.42 x 2.90)

Third Floor



En-Suite
Bathroom
Rear Garden
Views

Energy Efficiency Rating		
	Current	Potential
Very energy efficient - lower running costs		
(92 plus) A		
(81-91) B		
(69-80) C		
(55-68) D		
(39-54) E		
(21-38) F		
(1-20) G		
Not energy efficient - higher running costs		
	76	82
England & Wales	EU Directive 2002/91/EC	

Environmental Impact (CO ₂) Rating		
	Current	Potential
Very environmentally friendly - lower CO ₂ emissions		
(92 plus) A		
(81-91) B		
(69-80) C		
(55-68) D		
(39-54) E		
(21-38) F		
(1-20) G		
Not environmentally friendly - higher CO ₂ emissions		
	77	77
England & Wales	EU Directive 2002/91/EC	

The difference between house and home

You may download, store and use the material for your own personal use and research. You may not republish, retransmit, redistribute or otherwise make the material available to any party or make the same available on any website, online service or bulletin board of your own or of any other party or make the same available in hard copy or in any other media without the website owner's express prior written consent. The website owner's copyright must remain on all reproductions of material taken from this website.

Gosforth 0191 236 2070
Newcastle 0191 284 4050
Forest Hall 0191 605 3134
High Heaton 0191 270 1122
Low Fell 0191 487 0800
Tynemouth 0191 257 2000
Whitley Bay 0191 251 3000
Property Management Centre 0191 236 2680



www.janforsterestates.com

