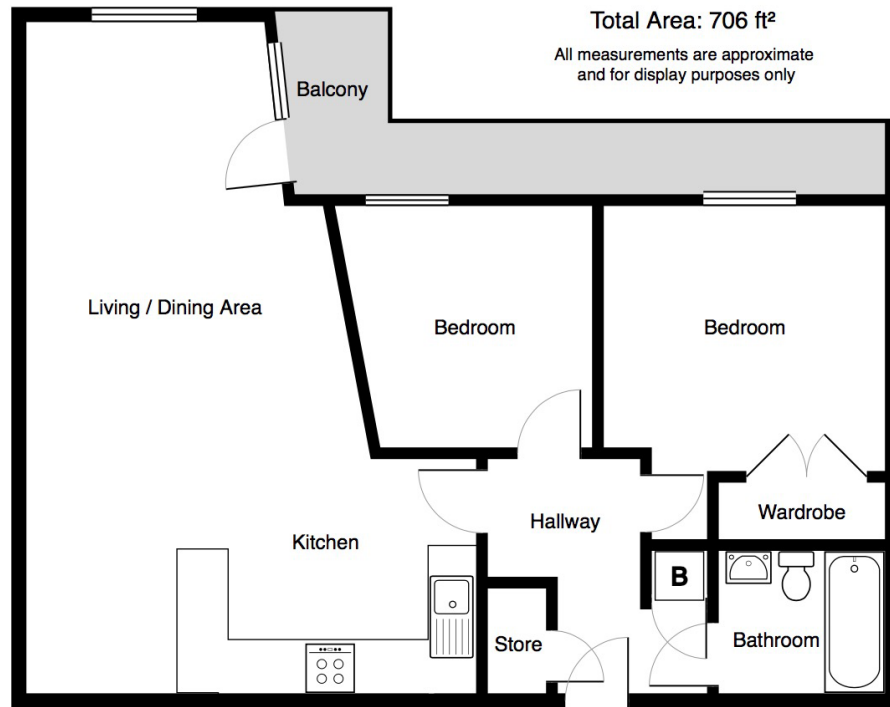


Longstone Court, Great Dover Street, London, SE1 4LB



Deposit: 5 Weeks
Bedrooms: 2
Bathrooms: 1
Furnished: Yes
Property Style: Modern
Location: Borough SE1
Council Tax Band: F
EPC Rating: D
Nearest Transport:
Borough Tube for the Northern
Line or London Bridge station for
Jubilee Line or Overground
Borough Tube Northern Line
Buses: 21, n21, 35, 133, n133, 343,
n343, c10

All rooms have been measured with electronic laser and are approximate measurements only. None of the services to the above property have been tested by ourselves, and we cannot guarantee that the installations described in the details are in perfect working order. Independent London Lettings for themselves, and for the vendors or lessors, produce these brochures in good faith, and are a guideline only. They do not constitute any part of a contract and are correct to the best of our knowledge at the time of going to press.

Independent London
6-8 Cole Street, Trinity Village,
London SE1 4YH
t: 020 7099 6373
e: hello@independentlondon.net

independentlondon.co.uk
Landlords ask for The 5% Let Only
Service from Independent London

independent
london.
Right place. Right people.