



**STAGS**

Fitzhead Court





# Fitzhead Court

Fitzhead, Taunton, Somerset TA4 3JP

Halse 2 miles • Milverton 2 miles • Wiveliscombe 3 miles • Taunton 9 miles

A fascinating Grade II\* period house, forming a substantial wing of the original Fitzhead Court, in a very sought after village

- Four Reception rooms
- Kitchen/breakfast room
- Principle bedroom with en suite
- Four further bedrooms
- Cellars
- Delightful gardens of approx. 0.5 acres
- Pillared entrance with gravelled parking
- Garage and gravelled yard with outbuilding

Stags  
5 Hammet Street  
Taunton  
Somerset TA1 1RZ  
Tel: 01823 256625  
Email: taunton@stags.co.uk

The London Office  
40 St James's Place  
London  
SW1A 1NS  
Tel: 020 7839 0888



[stags.co.uk](http://stags.co.uk)



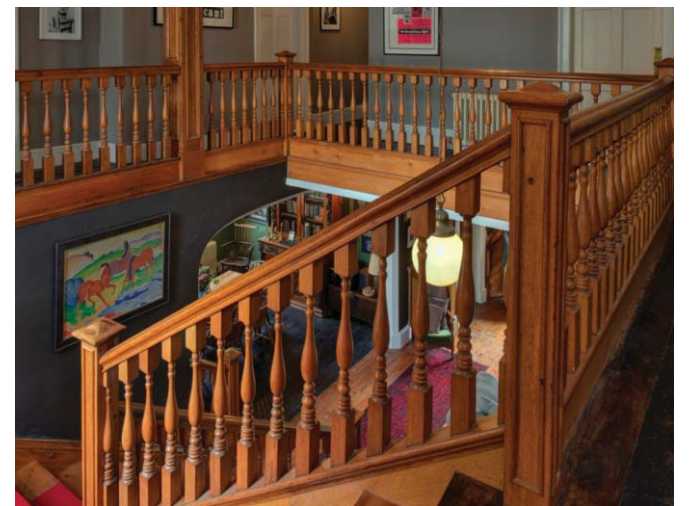
## Situation

Fitzhead Court occupies a wonderful setting in the centre of the village behind a high stone wall. Fitzhead is a popular village with a public house, a Church and the Tithe Barn, which is used for village events and activities. The neighbouring villages of Halse and Milverton are both 2 miles away and also have public houses and Churches as well as a convenience store in Milverton. Wiveliscombe is 3 miles distant and provides a good range of shops for day to day needs. Taunton, The County Town of Somerset lies approximately 9 miles to the south east and has an excellent shopping centre with many high street stores, three highly respected independent schools, access to the M5 motorway and Taunton railway station offers mainline railway links to the rest of the country. The countryside surrounding the village is renowned for its walking and riding, being on the lower slopes of the Brendon Hills and it is also close to the Quantock Hills and Blackdown Hills, both of which are designated Areas of Outstanding Natural Beauty.

## Description

Fitzhead Court is a fascinating period house of immense charm and character and forms a substantial part of the former court house. The current occupiers have improved the house substantially and have renovated the house throughout. The house has an attractive façade with arched windows and cut stone entrance, which was probably added in the Georgian era. The house retains much of its original character, particularly in the reception rooms where there is a fireplace with a Jacobean surround panelling and shutters, beautiful box panelled ceilings, which depict various ages of the property. The gardens lie mainly to the south and have been cleverly planted over the years providing a good degree of seclusion.

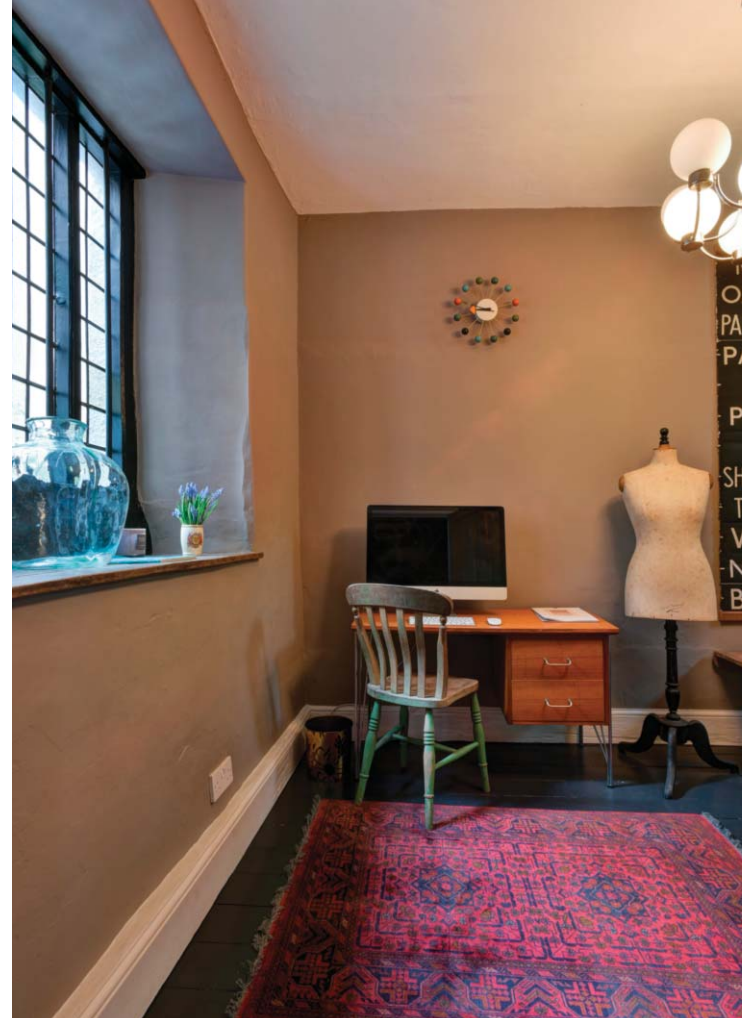




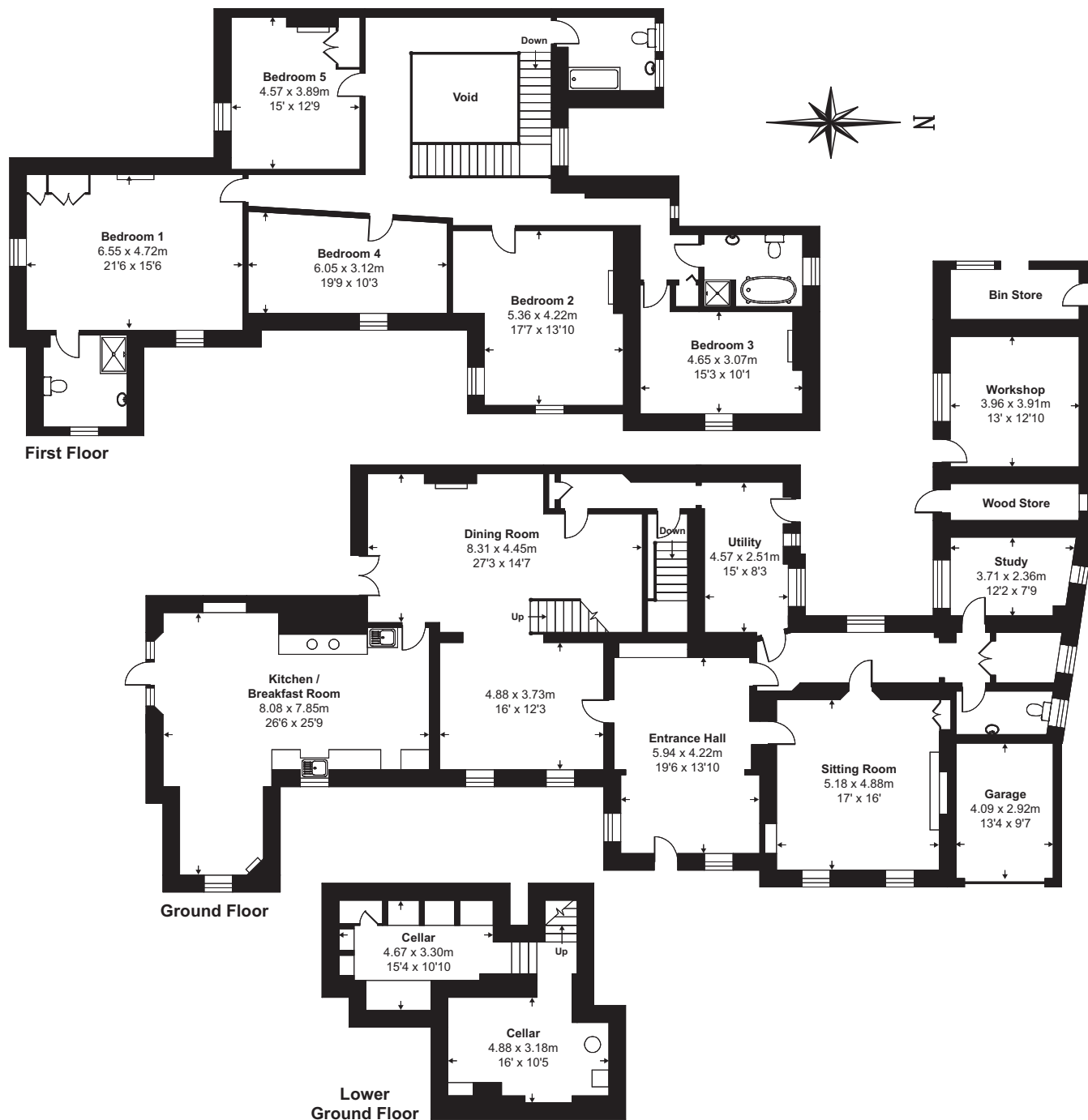
## Accommodation

The accommodation is arranged over two floors. A carved stone entrance with gothic arched heavy timber front door provides access to the reception hall, which has an exposed wooden floor, panelling to dado level and cross beamed ceiling with encrusted rose and thorn pattern. Doors lead through to the drawing room and the dining area. The drawing room is a delightful room with sash windows, shutters and a handsome fireplace with mantle piece and Bath Stone surround. There is a beautiful ceiling cornice and doors leading through to the rear hall. The dining area lies on the opposite side of the hall with two sash windows to the front of the house and a boxed panelled ceiling with a wide opening through to the sitting room, which also has an open fireplace with a high carved wooden mantelpiece with Jacobean panelling and an inset multi fuel stove. A magnificent turning staircase from the room leads up to the floor and to a galleried landing.

The kitchen is very much the centre of the house and is fitted with a range of handmade painted units and includes a Belfast sink and a solid fuel, log and coal Rayburn. There is also a breakfast room with space for a large table and doors leading out to the garden. The rear hall has a range of built in storage cupboards and has doors to a cloakroom and study with leaded glazed window looking into the courtyard with original inscriptions dating back to 1746. There is a laundry/boot room and a further inner hall with a door down to the cellar room, which has a wine cellar and oil fired boiler, which has two zones upstairs and downstairs. The galleried landing is lit by a beautiful Y-tracery window and leads to the family bathroom and a bedroom, which has a fireplace with iron grate and high mantel piece with an opening to an inner hall landing, which leads through to the principle bedroom. This is a wonderful room with views over the garden, an open fireplace, painted mantelpiece and door to the en suite shower room with enclosed shower cubicle and fitted suite. The family bathroom has a double ended free standing bath with a fitted shower attachment, WC and wash basin and arched window. There are three further bedrooms on the first floor.



**Fitzhead Court**  
 Approx. Gross Internal Floor Area  
 438.6 Sq Metres 4722 Sq Ft (Excludes Wood Store / Workshop / Bin Store / Void)



## Outside

The house is approached through a pillared entrance, shared with neighbouring properties and opens out onto a large gravelled parking area. There is an attached open fronted garage. The cobbled area at the entrance of the house has a heart and diamond design and a gateway leads through to the principle south facing garden area with a raised terrace and gently sloping lawns with a rectangular bed and variety of specimen trees and plants. There are a number of fruit trees including apples, pears and cherries. The gardens are secluded and shared with a number of mature trees including the Sweet Chestnut, Yew, Magnolia, Lilac, Walnut and Rowen. The cobbled courtyard leads to the rear of the house and gives access to a wood store and workshop/studio. There is also a further log store. In all, the gardens and grounds amount to approximately 0.5 acres.

## Services

Mains electricity, water and drainage. Oil fired central heating. The property is heated by two separate boilers, heating and hot water systems.

## Directions

From Taunton proceed in a westerly direction on the B3227 towards Wiveliscombe. Proceed through Norton Fitzwarren and Hillcommon and just beyond Preston Bowyer look for the signs right to Fitzhead 2 miles. Take this turning and proceed along the road for approximately 1.5 miles until you see the sign right to Fitzhead. Proceed into the village and you will see a high stone wall on the left and the entrance to Fitzhead Court can be seen after a short distance.

These particulars are a guide only and should not be relied upon for any purpose.

