

# NEW PROVIDENCE WHARF

ISLE OF DOGS • E14



# NEW PROVIDENCE WHARF

ISLE OF DOGS • E14

*This superbly presented 2 bedroom, 2 bathroom Premier apartment extending to approximately 115 sq m (1,238 sq ft) is located on the third floor and offers a wonderful wraparound terrace offering sweeping views across the River Thames encompassing the O2 and Canary Wharf.*

2 bedrooms (both with en suite bathrooms)

Reception room • Kitchen • Utility room

Guest WC • Balcony

Private parking • Concierge • Leisure facilities

**Offers in excess of:** £1,000,000

**Tenure:** Leasehold

**Local authority:** London Borough of Tower Hamlets

These particulars are intended only as a guide and must not be relied upon as statements of fact. Your attention is drawn to the Important Notice on the last page of the text.





### Description of Property

The property benefits from having an abundance of natural light from the floor to ceiling windows and having a majority South facing aspect. There is an entrance hall with a guest WC and access to both bedrooms and the reception room. The master bedroom offers built in wardrobes, floor to ceiling windows, access to the terrace with river views and a generous en suite bathroom. The 2nd bedroom also benefits from having built in wardrobes and an en suite bathroom along with a Juliet balcony overlooking the communal grounds with partial river views. The reception room itself offers a fantastic entertaining and dining space with glorious views across the river and access to a terrace providing far reaching views. The separate kitchen has integrated appliances and ample worktop space along with a generous larder and further storage. The property offers air conditioning and underfloor heating throughout and secure valet parking.

New Providence Wharf has the benefit of a 24 hour concierge and security along with an impressive new leisure complex offering a gymnasium and swimming pool.

### Situation

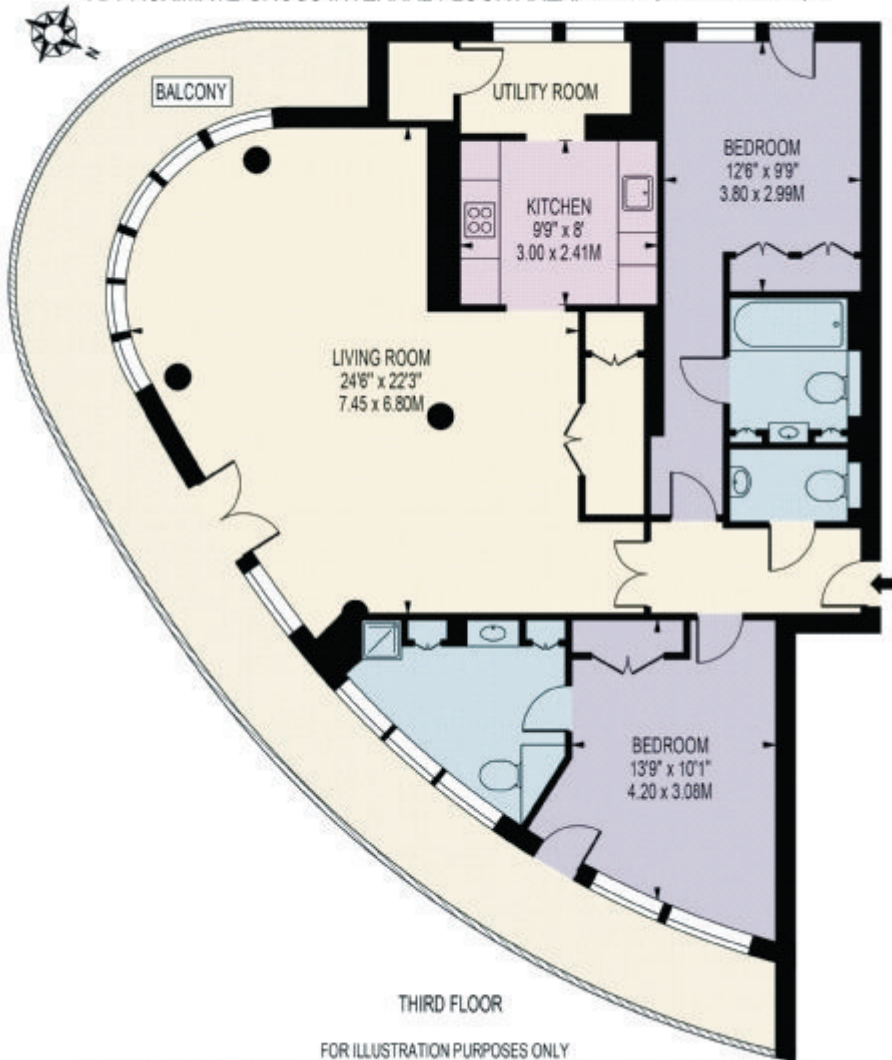
New Providence Wharf is located to the east of Canary Wharf and its shops, bars and restaurants. Transport links can be found at both Blackwall DLR (0.3 miles) and Canary Wharf Jubilee line (0.7 miles).

All times and distances are approximate.



# NEW PROVIDENCE WHARF

APPROXIMATE GROSS INTERNAL FLOOR AREA: 1238 SQ FT - 115.00 SQ M



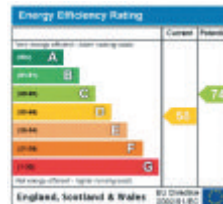
THIRD FLOOR

FOR ILLUSTRATION PURPOSES ONLY

THIS FLOOR PLAN SHOULD BE USED AS A GENERAL OUTLINE FOR GUIDANCE ONLY AND DOES NOT CONSTITUTE IN WHOLE OR IN PART AN OFFER OR CONTRACT. ANY INTENDING PURCHASER OR LESSEE SHOULD SATISFY THEMSELVES BY INSPECTION, SEARCHES, ENQUIRIES AND FULL SURVEY AS TO THE CORRECTNESS OF EACH STATEMENT. ANY AREAS, MEASUREMENTS OR DISTANCES QUOTED ARE APPROXIMATE AND SHOULD NOT BE USED TO VALUE A PROPERTY OR BE THE BASIS OF ANY SALE OR LET.



**020 7512 9966**  
**18/19 Cabot Square**  
**London E14 4QW**  
 cwharf@knightfrank.com



**Important Notice 1. Particulars:** These particulars are not an offer or contract, nor part of one. You should not rely on statements by Knight Frank LLP in the particulars or by word of mouth or in writing ("information") as being factually accurate about the property, its condition or its value. Neither Knight Frank LLP nor any joint agent has any authority to make any representations about the property, and accordingly any information given is entirely without responsibility on the part of the agents, seller(s) or lessor(s). **2. Photos etc:** The photographs show only certain parts of the property as they appeared at the time they were taken. Areas, measurements and distances given are approximate only. **3. Regulations etc:** Any reference to alterations to, or use of, any part of the property does not mean that any necessary planning, building regulations or other consent has been obtained. A buyer or lessee must find out by inspection or in other ways that these matters have been properly dealt with and that all information is correct. **4. VAT:** The VAT position relating to the property may change without notice. Particulars dated May 2017 Photographs dated May 2017. Knight Frank LLP is a limited liability partnership registered in England with registered number OC305934. Our registered office is 55 Baker Street, London, W1U 8AN, where you may look at a list of members' names.