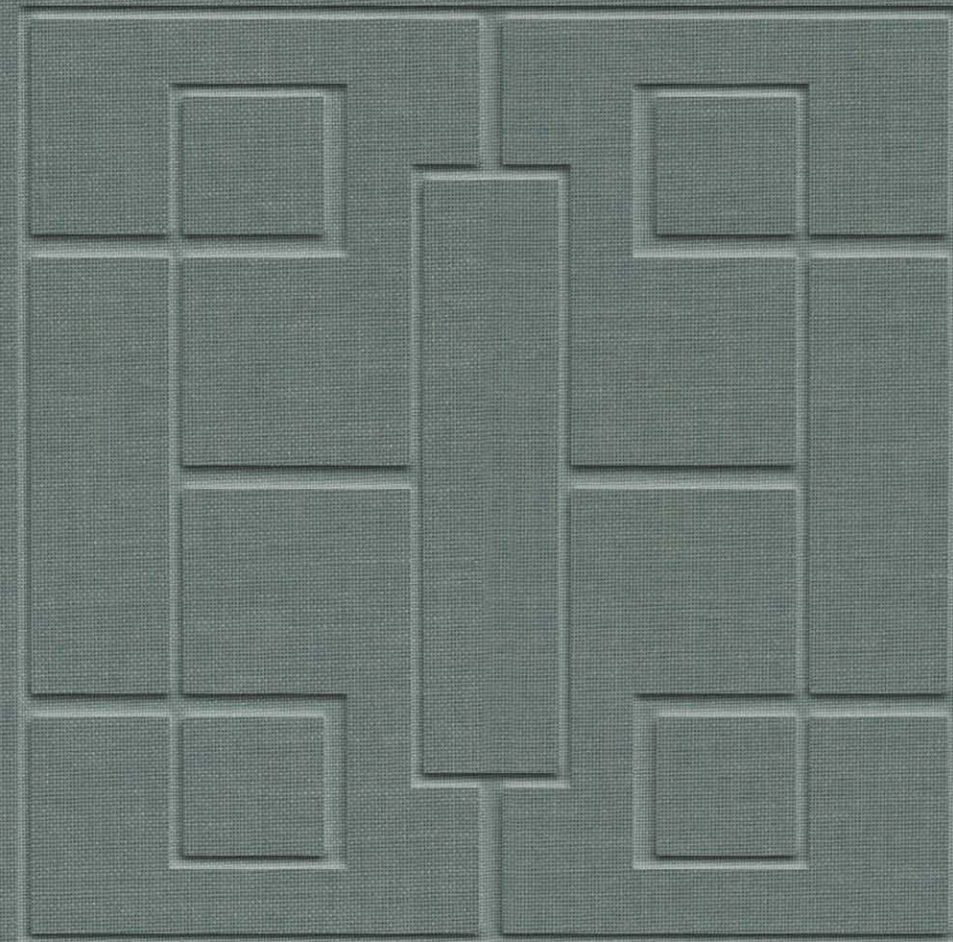


KNIGHTON PLACE

KNIGHTSBRIDGE



FINCHATTON
RESIDENCES



PEERLESS HERITAGE, VIBRANCY AND CHARM

Knightsbridge, a place of royal heritage spanning centuries, has long been regarded as one of London's most refined boroughs. Few other areas can match its cosmopolitan atmosphere of elegant living and imitable sense of style.

Stretching from Hyde Park Corner to the museums area of South Kensington, this is an area of prestige and sophistication.

And yet behind the unequivocal glamour of Harrods, the chic designer labels of Sloane Street, and the Michelin star restaurants, there's a quintessentially British charm that makes living here so extraordinary. Cobbled streets, private garden squares, and artisan boutiques that have been quietly beguiling residents for decades.



KNIGHTON PLACE, SW3

Knighton Place is a new contemporary development of five townhouses and four apartments on Yeoman's Row, a quiet residential street in Knightsbridge.

An intimate connection with the borough's rich history has been celebrated by naming each townhouse after British architects who helped shape Knightsbridge as we know it today: Blomfield, Eyton, Leverton, Caroe, Elsam.

Designed by Finchatton, each residence is spacious and perfectly proportioned, with handcrafted period detailing alongside the very latest technology.

Some images are computer-generated and for indicative purposes only.

Elegant interiors find the perfect balance between grandeur and intimacy with a restrained colour palette and luxurious Art Deco-inspired detailing.

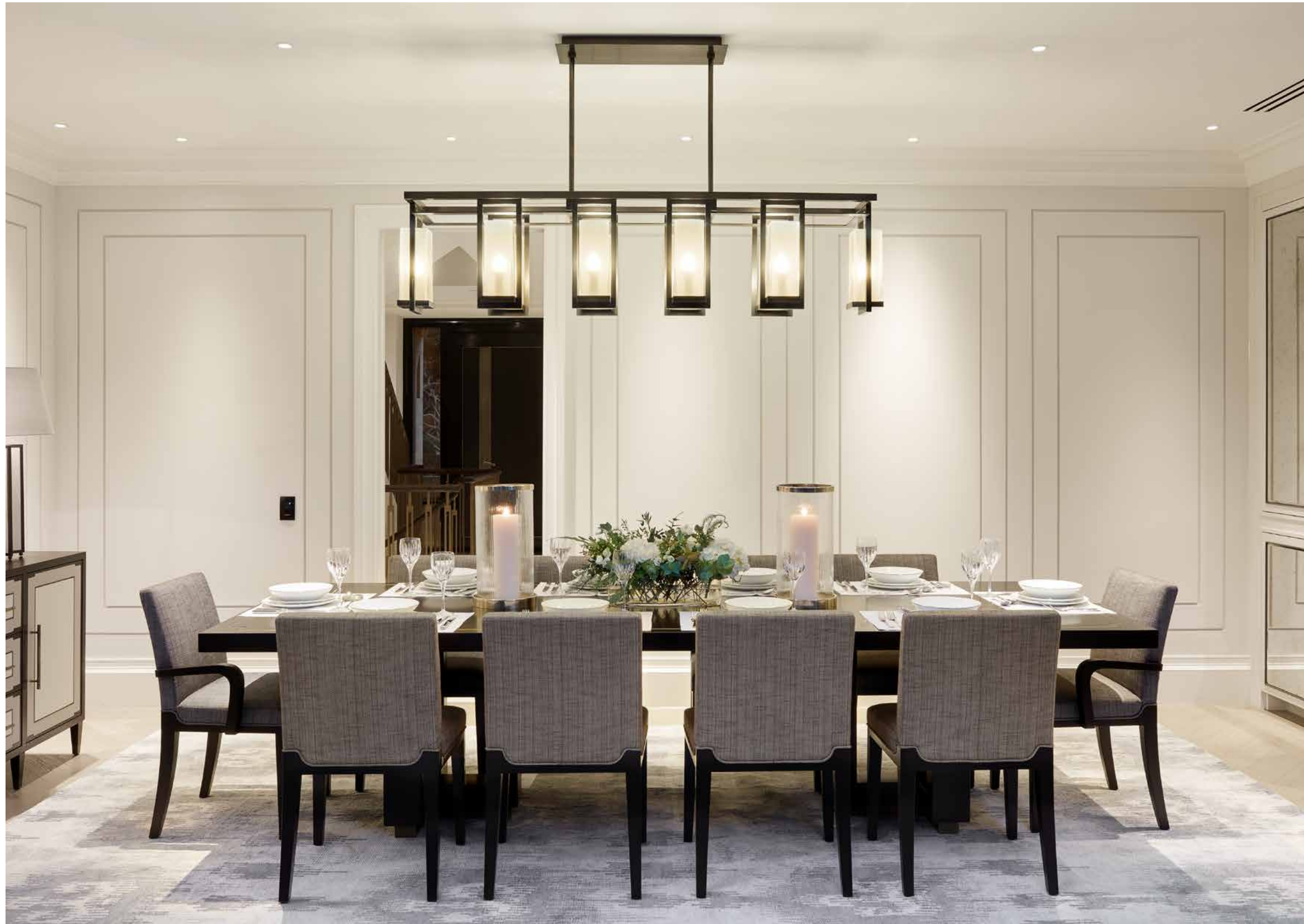


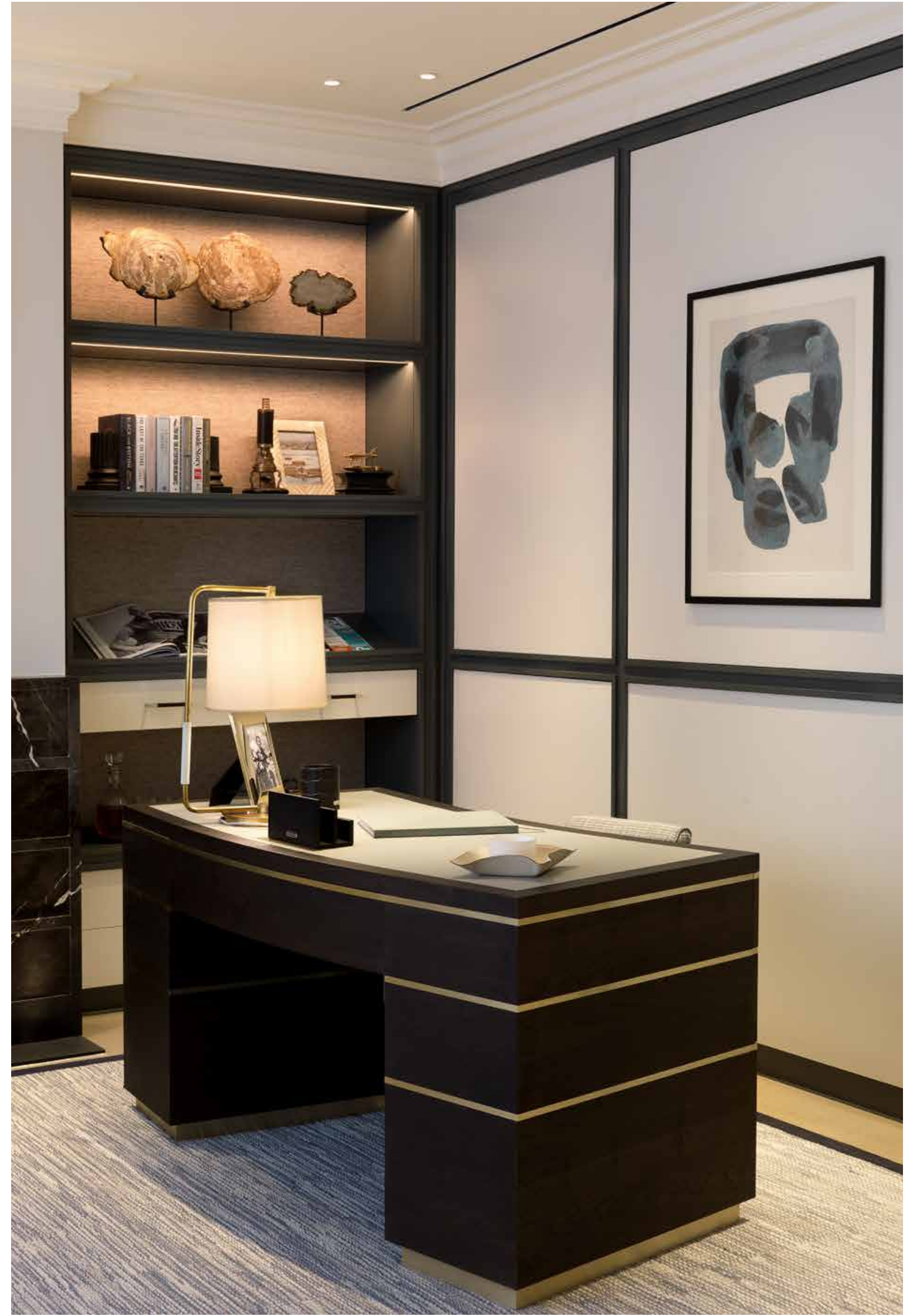
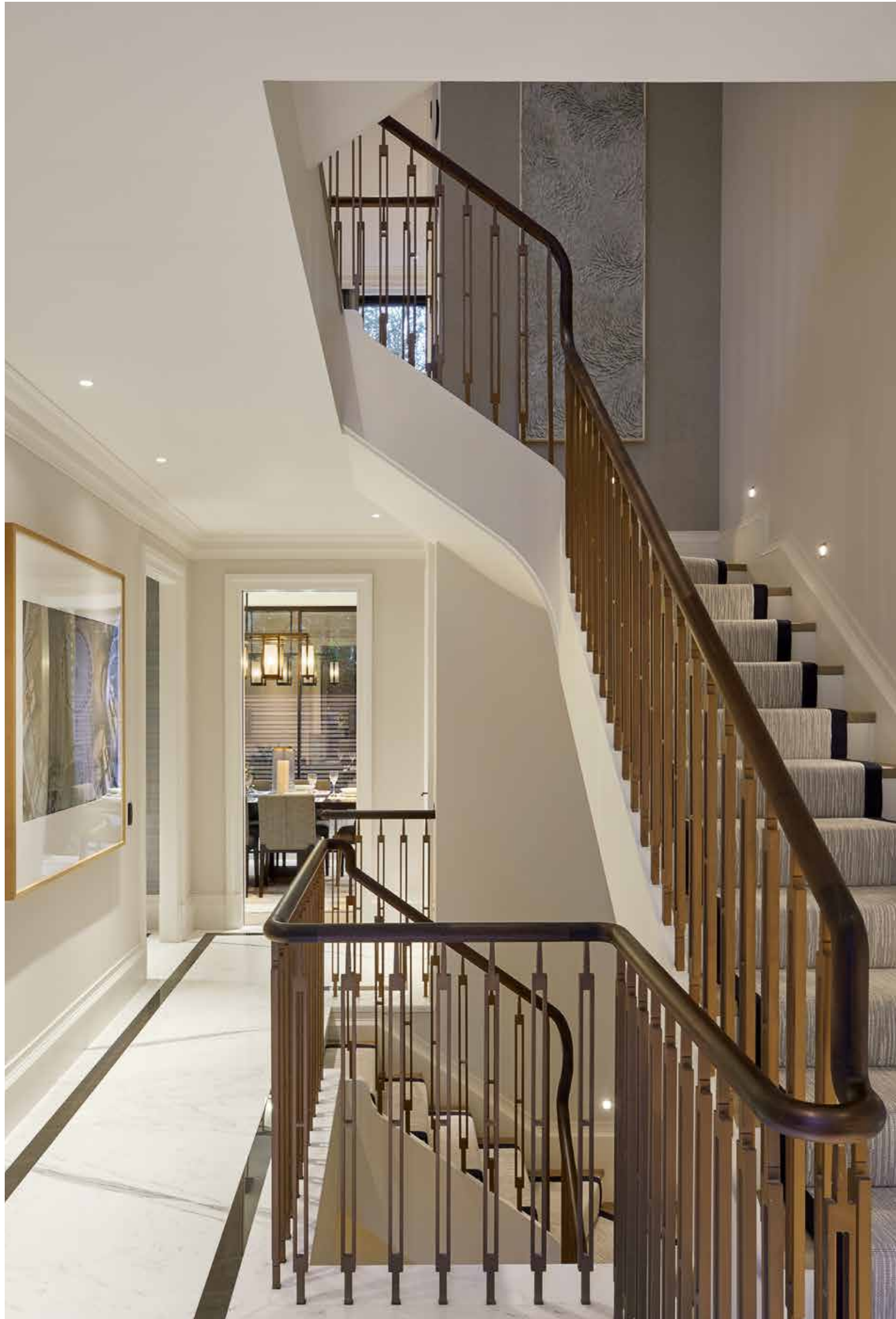


Dark timber panelling with display shelving features in the reception room, where the latest audio and visual technologies are seamlessly built-in.



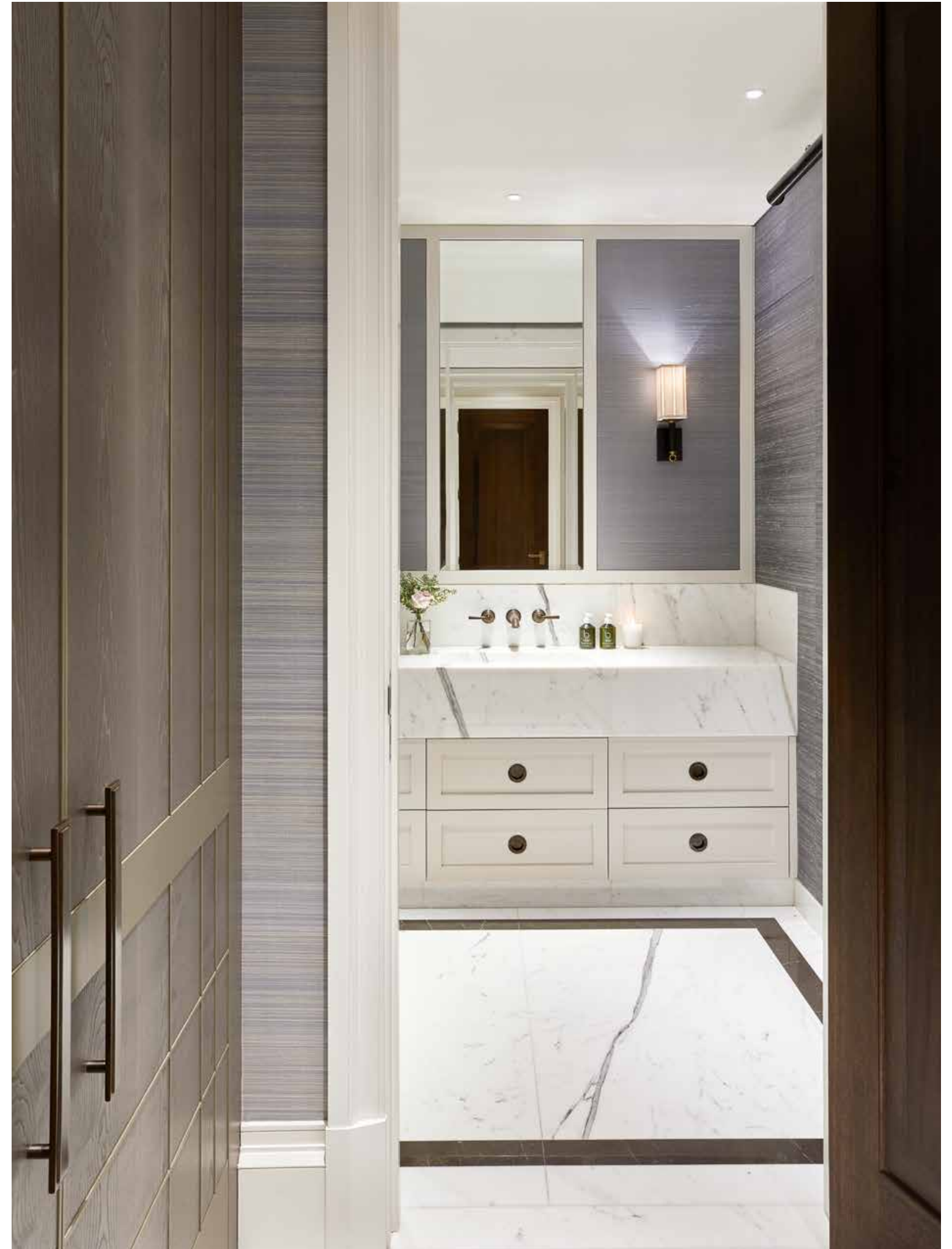
The light and airy dining room is designed for entertaining. Mirror-panelled joinery, upholstered dining chairs and a handmade rug add a contemporary twist.





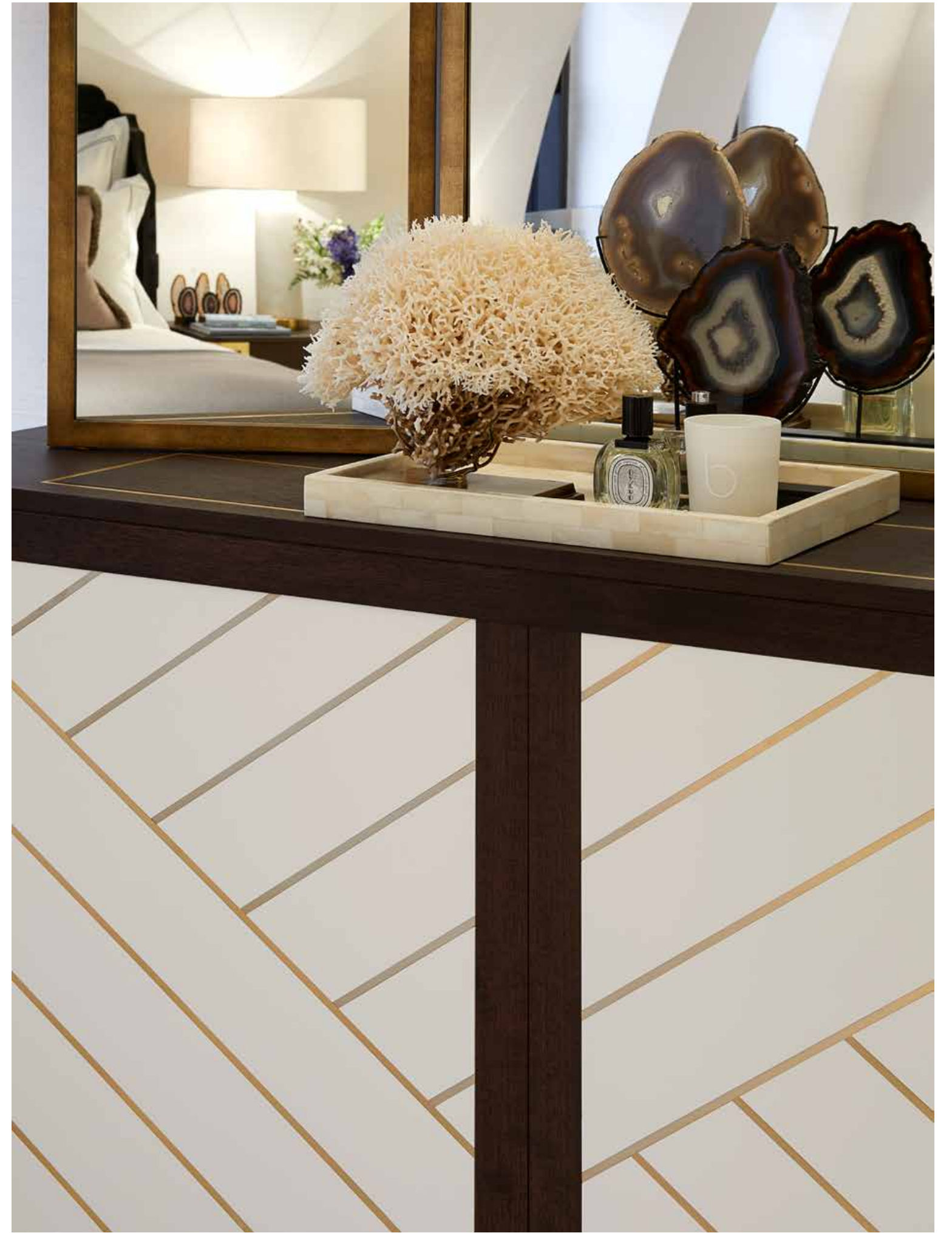


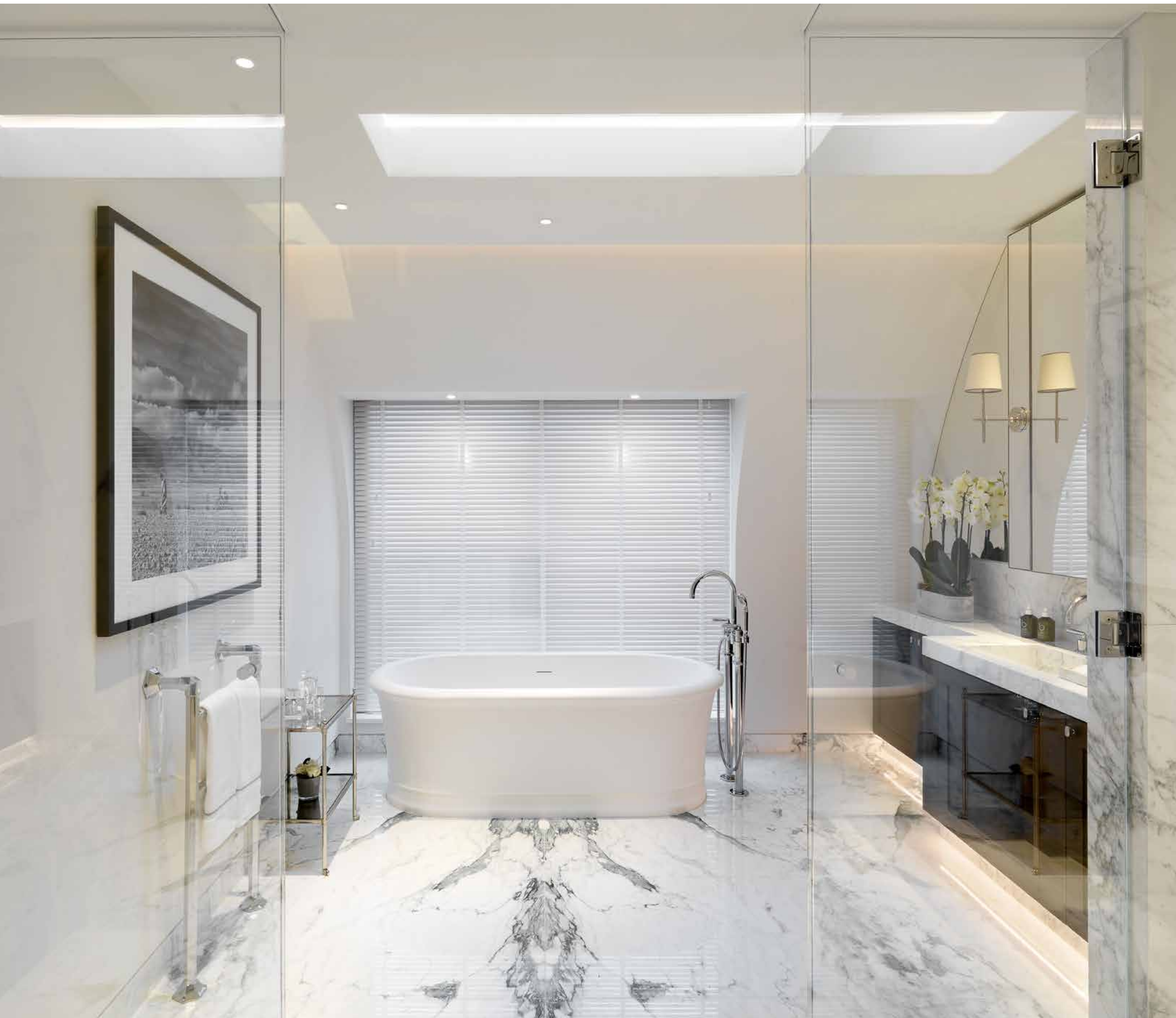
The Linley kitchen features Sub-Zero and Wolf appliances, with outdoor space accessible through full-height sliding doors.



The master suite occupies the third floor, with calm and sophisticated tones used in the bedroom. A separate dressing room provides ample storage.







In the master bathroom, book-matched marble sets a luxurious tone, echoed in twin basins and a statement free-standing bath.





Four further bedrooms, two of which are en-suite, are tastefully finished with fabric wall coverings and luxury carpets. Each has ample storage with built-in wardrobes.





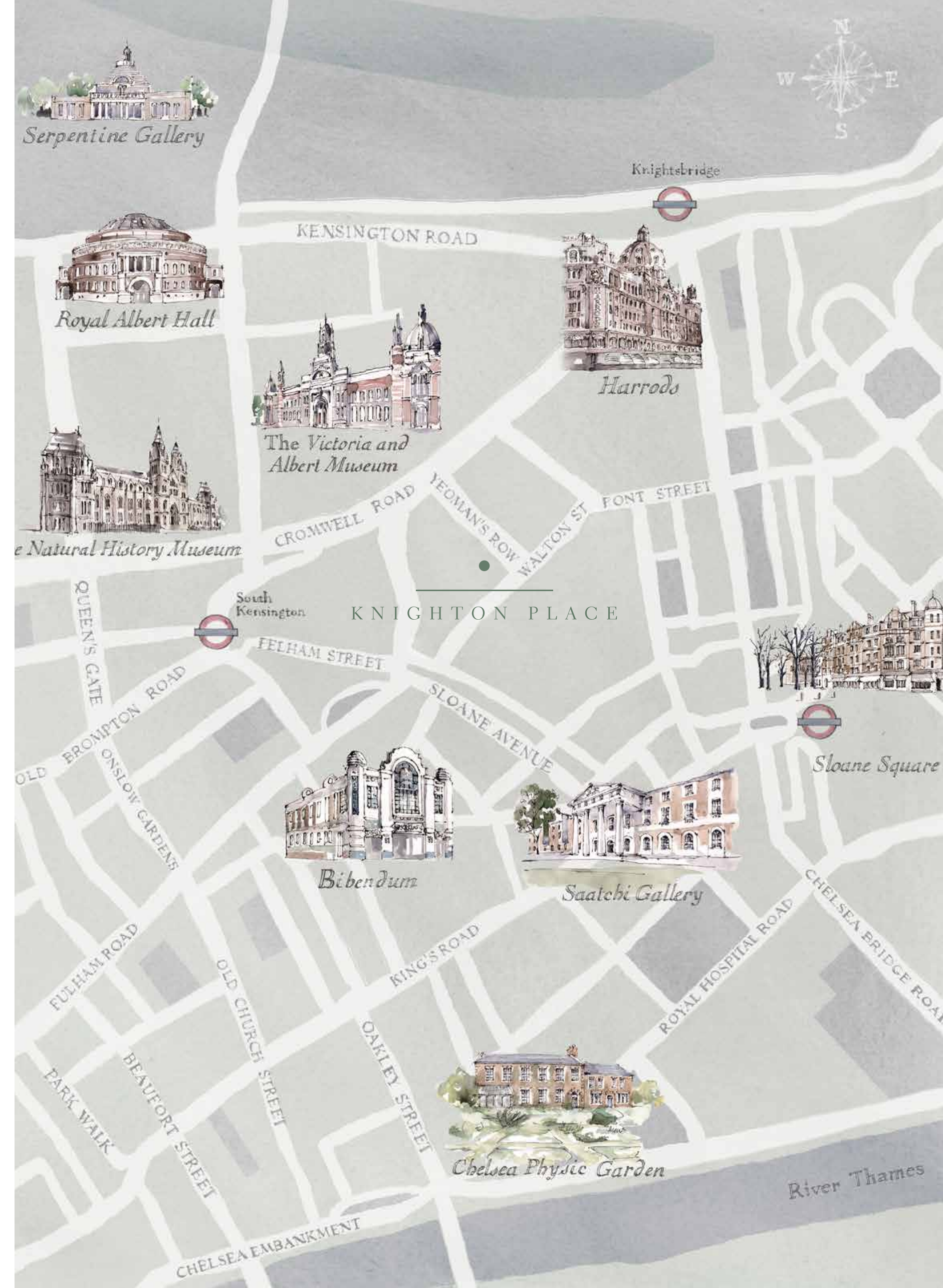


LOCATION

Leafy Hyde Park is a short stroll from Knighton Place, with the Serpentine and the Princess Diana Memorial Fountain providing points of interest amongst the acres of open parkland. Other notable landmarks within the vicinity are the Royal Albert Hall and the distinctive tower of Knightsbridge Barracks, home to officers of the Household Cavalry.

Excellent preparatory schools are found in and around the area, such as Knightsbridge School on Pont Street, and secondary schools within close proximity include St Paul's, Godolphin & Latymer and Westminster School.

With the luxury brand stores on Sloane Street, the department stores Harrods and Harvey Nichols, world-class hotels Bulgari and Mandarin Oriental, and Zuma and other superb restaurants, the area is hard to match in its prestige and sophistication.

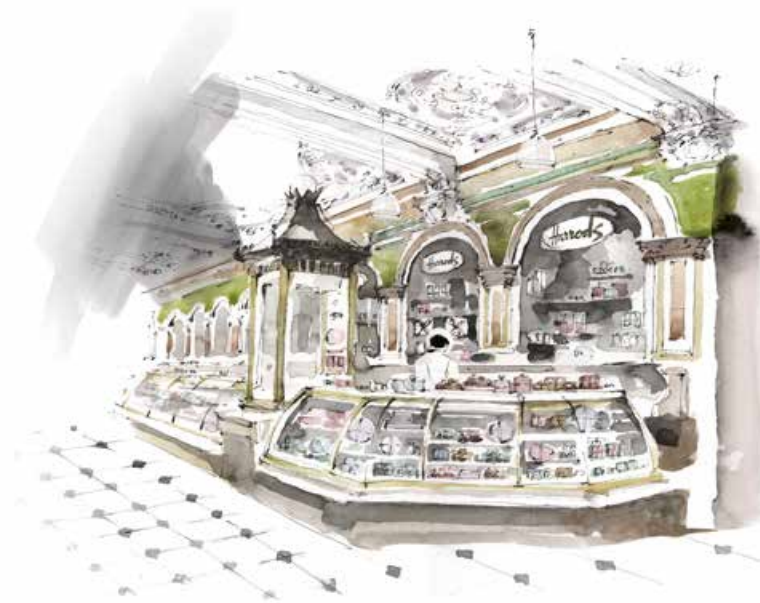




The fine historic automobiles at Fiskens in the cobbled Queens Gate Place Mews. Vintage Ferraris, Aston Martins, E-type Jaguars and Bugattis – an aesthete's dream.



Step along Sloane Street past Tod's, Jimmy Choo, Louis Vuitton and Gucci to the inimitable House of Berluti, leathermakers extraordinaire, and heaven for the well-heeled.



Indulgence is traditional. Since 1849, connoisseurs of taste have travelled across oceans and continents to gaze in wonderment at Harrods Food Halls. Everything, for everyone, everywhere.



Wild flowers in Hyde Park, cherry blossom in garden squares, and a spectacular explosion of colour and scents emanating from local florists.



FINCHATTON

Finchatton was founded in 2001 to create the most exceptional homes in the world. The company's signature hallmark of effortless elegance and timeless sophistication continues to inspire and excite the world's most discerning clientele. While Finchatton continues to grow, the qualities that define it are unchanging: outstanding craftsmanship, intelligent design, contemporary functionality and the highest quality materials. The company has two distinct divisions: Finchatton Private, which undertakes bespoke commissions around the world, and Finchatton Residences for development projects, of which the latest addition is Knighton Place. A selection of current projects are showcased in the following pages.

FINCHATTON PRIVATE

Finchatton Private undertakes design commissions for both private clients and specialist developers, creating elegant interiors for homes all over the world. Rather than a house style, our interior design team approaches each project individually, considering every detail from the flow and feel of a space through to specialist materials for cabinetry. We travel the world to source a particular fabric or accessory to create pieces both functional and beautiful, and pride ourselves on relationships with the finest suppliers and craftsmen.

The difference is in the detail. You'll see it in the finishes and experience it from the moment you step into your home.

FINCHATTON RESIDENCES

Finchatton Residences designs and develops individual and multiple residence properties all over the world. Always in the finest locations, each illustrates a dedication to design excellence and innovation, obsessive attention to detail, superior quality of build, and professional integrity.

KINGWOOD

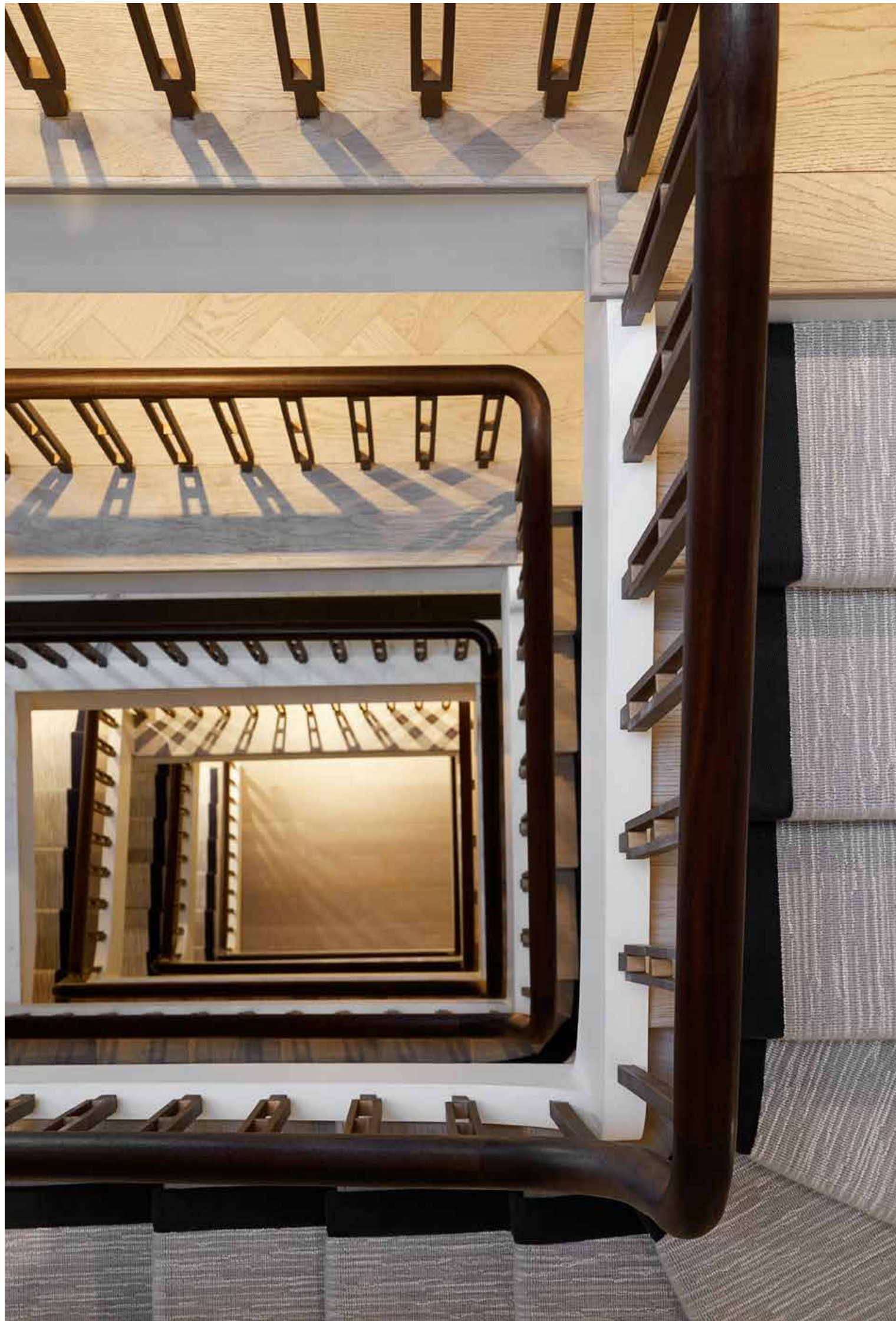


Completing spring 2017, Kingwood is a new build development of ten spacious apartments in Hans Place, Knightsbridge. Residents have access to the private Hans Place Garden. Amenities include a residents' concierge, large gym, spa treatment suite, media room, wine room, chauffeur and housekeeping staff facilities, and secure underground parking.

TWENTY GROSVENOR SQUARE



Twenty Grosvenor Square, a Four Seasons Residence, is located on one of the world's grandest garden squares, and is a home of historical significance. Due to complete spring 2018, the thirty-seven private apartments have been masterfully designed by Finchatton to combine exceptional elegance with legendary Four Seasons service to create the ultimate lifestyle experience. The amenities include a 25-metre pool, luxurious spa, a state-of-the-art gymnasium, cinema room, garden library, private garden and terrace, business centre, games and function room, wine cellar, crèche and valet parking.



FINCHATTON RESIDENCES

Knighton Place has been designed by Finchatton.

Since 2001, the company has created exceptional homes

at the finest addresses all over the world.

Finchatton, Jubilee House, 2 Jubilee Place, London SW3 3TQ

T +44 (0)20 7349 1120 F +44 (0)20 7349 1159

info@finchatton.com

finchatton.com

FINCHATTON
RESIDENCES

Rupert des Forges, Knight Frank

T +44 (0)20 7861 1777

M +44 (0)7879 434 046

rupert.des.forges@knightfrank.com

Barbara Allen, Savills

T +44 (0) 20 7590 5059

M +44 (0)7831 458 792

baallen@savills.com



FURTHER INFORMATION

Knighton Place

40-50 Yeomans Row, London SW3 2AH

Leasehold

Local Authority

Royal Borough of Kensington and Chelsea

Price on Application

Funding Partner



WAINBRIDGE
ESTATES

Wainbridge Estates is a residential investment management business, created to satisfy the increasing demand for super prime properties across the globe. We provide discerning clients with access to investments in iconic residences of unparalleled luxury in some of the world's most sought-after addresses, including Paris, the French Riviera, Courchevel, London, St. Barths, New York and Moscow.

Some images are computer-generated and for indicative purposes only.

IMPORTANT NOTICE

Note: Variations occur between house types; please refer to the marketing team for individual house specifications. The seller reserves the right to make changes to specific brands, materials and appliances referred to in the specification. In such cases, a similar alternative will be provided. Some images in this brochure are computer-generated and for indicative purposes only. This document is intended for guidance only, and neither the seller nor any of its affiliates or appointed agents, nor the development co-ordinator, Finchatton, accept any legal responsibility for any of the materials or disclosures contained in this document or in any other marketing materials. This document does not constitute an offer nor may any statements in it be relied on as warranties or pre-contractual representations. Professional advice should be obtained before doing anything on the basis of the content of this document. Neither the agents nor the development co-ordinator nor any of their respective employees, officers or agents has any authority to make or give any representations or warranty whatsoever in relation to the development or any part of it. The specification of the houses is the anticipated specification at the date of issue of this document (March 2017) and may subsequently change. The services and amenities listed are indicative of the seller's current intentions as to the services and amenities which will initially be provided at Knighton Place, but reserves the right to add to, remove or amend these services in the future.

CREDITS

Brochure by Pure DNA