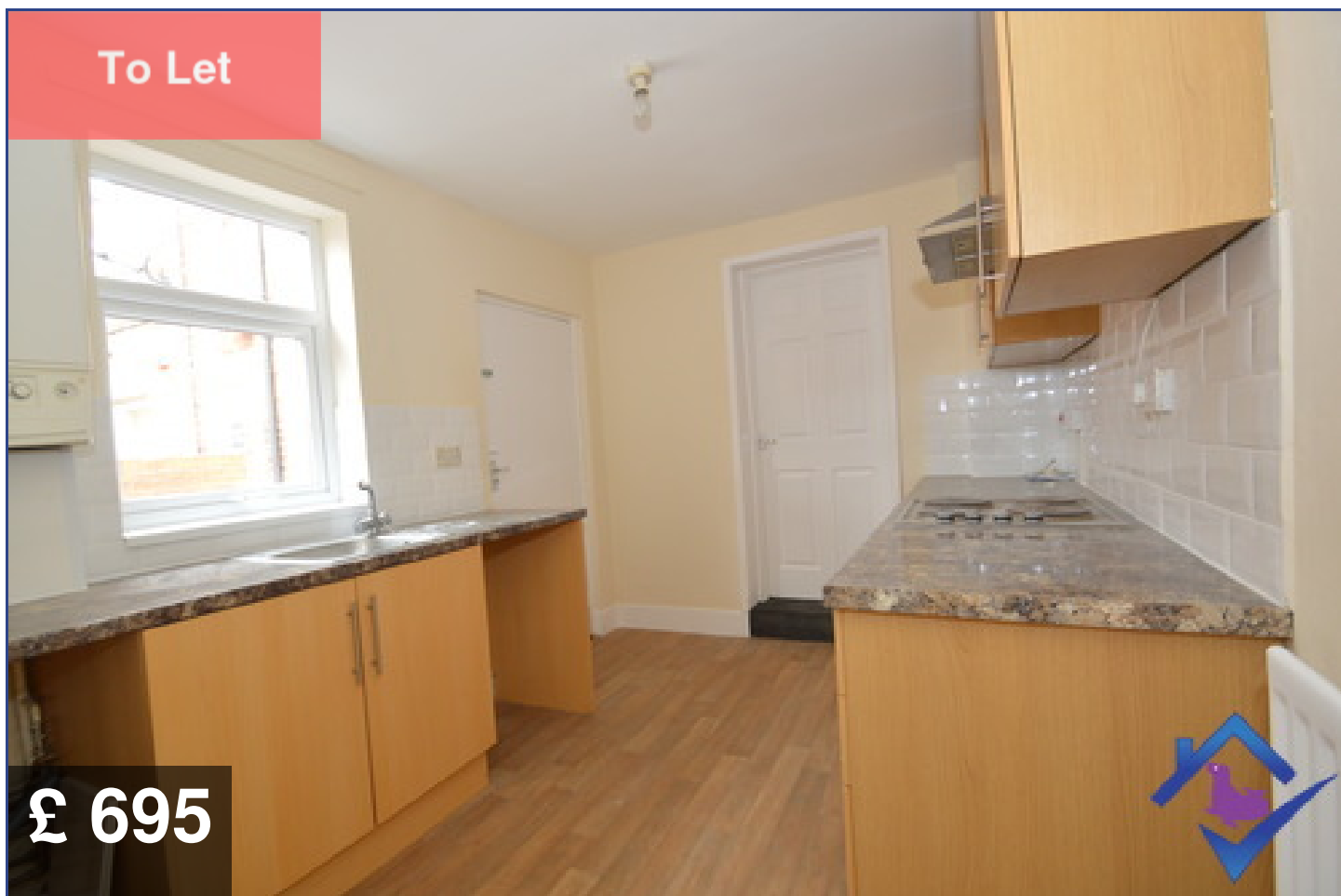




**SEALPROPERTIES**  
RENTAL MARKET SPECIALISTS

**30 Hyde Park Street  
Gateshead  
NE8 4QB**



**Excellent Ground Floor Flat**

Beds : 2

Bath : 1

Gas CH : Yes



0191 580 5900



[WWW.SEALPROPERTIES.CO.UK](http://WWW.SEALPROPERTIES.CO.UK)



[INFO@SEALPROPERTIES.CO.UK](mailto:INFO@SEALPROPERTIES.CO.UK)

## Contact Us

### Agent Information

**Chloe Yates**

**chloe@sealproperties.co.uk**

**167/169 Saltwell Road**

**Gateshead, NE8 4TJ**

**sealproperties.co.uk**

### Scan Me

**Scan Me For Property Details**



### Quote Me

**Quote This Reference Number For  
More Information**

**SP17050294**

## Disclaimer

**Whilst every effort is made to ensure the contents of this brochure are accurate and true, the particulars are set out as a general outline for guidance purposes only and do not constitute any part of an offer or contract. Interested Parties should not rely on them as statements of representation of fact, but instead must satisfy themselves by inspection or otherwise as to their accuracy.**

**A Holding Fee equivalent to one week's rent is payable. Please contact the office for more details.**

**Energy Performance Certificate (EPC) information is available upon request. Please contact the office.**

# Gallery



## Description

Superbly presented ground floor tyneside flat. Freshly decorated throughout with new carpets and a refitted bathroom, tiled with white suite giving a modern neutral look. Ideal commuting links to Newcastle/Gateshead and easy access to the A1. Easy walking distance to local facilities and Saltwell Park.

## Specification

### GROUND FLOOR

#### Entrance Hallway

*Leading to main bedroom and living-room. Access to storage/meter cupboard.*

#### Lounge

*Ample sized room with storage cupboard. Leading to 2nd bedroom and kitchen.*

#### Kitchen

*Modern fitted kitchen with laminate work tops. Built in single stainless sink with taps over. Built in electric cooker hob and oven. Cooker hood over. Washing machine point. Double glazed window.*

#### Bedroom One

*Large double Bedroom*

#### Bedroom Two

*Ample sized second bedroom.*

#### Family Bathroom

*White coloured suite comprising of panelled bath with shower over, pedestal wash hand basin, low flush WC. Fully tiled to bath and partially on adjacent wall.*

### OUTSIDE

*Private yard. Small garden to the front. On street parking.*