



SALES

LETTINGS

MANAGEMENT

chiswick@tatepartnership.co.uk

020 8996 0000

TATEPARTNERSHIP.CO.UK



Whellock Road, Chiswick

£2,250 pcm

An impressive 793 sq/ft Duplex Apartment, which has just undergone several accommodation upgrades and is located in the very popular Bedford Park area of Chiswick. Upgrades include, newly decorated throughout, new floor coverings throughout, refitted kitchen & main bathroom. The living space is spread over the first & second floors, comprising: entrance stair to split level landing, newly fitted kitchen, newly fitted main bathroom, generous living room and double bedroom, stair to second floor loft conversion, with second double bedroom and en-suite shower room. Be the first to occupy this much improved property, 10 minutes walk along The Avenue to Turnham Green Station. Available now, unfurnished.

Whellock Road, W4 1DZ

Approximate Gross Internal Area
73.7 sq m / 793 sq ft

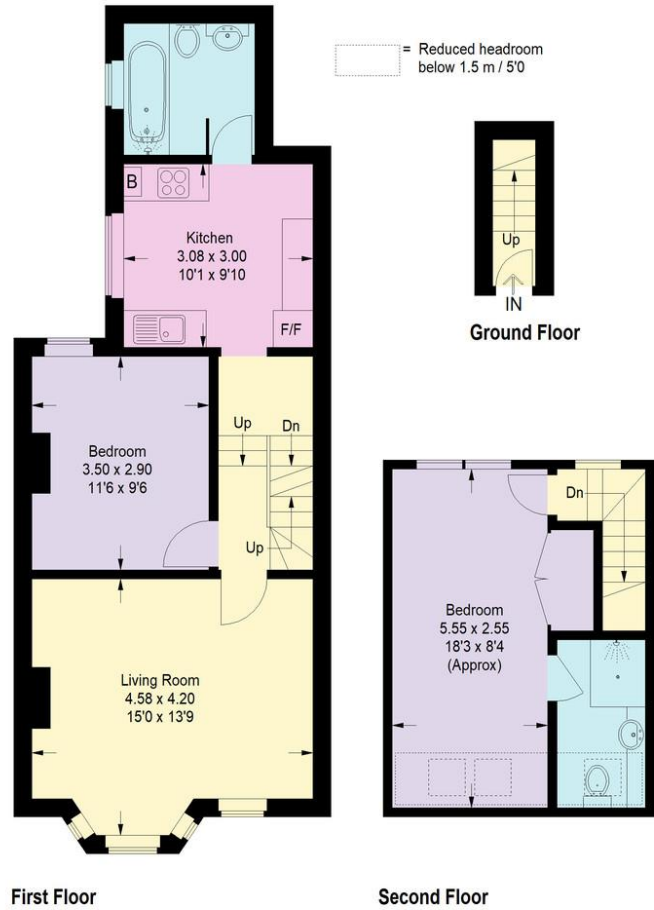


Illustration for identification purposes only, measurements are approximate, not to scale. Fourlabs.co © 2024 (ID1143386)

EPC

