



**12 Rhodewood Close, Downswood, Maidstone, Kent, ME15 8UR**  
**Price £315,000**



A well-planned semi-detached house situated in a sought after cul-de-sac on the periphery of a popular residential development adjacent to the Len Valley. The development is served by several shops, doctors surgery and bus service. Mote Park, a local beauty spot, is adjacent where fine recreational facilities are available and a park & ride bus service to Maidstone town centre, which is some 3 miles distance. The adjoining village of Bearsted offers a comprehensive range of amenities including excellent shops, schools, inns, restaurants and London line station.

The property was constructed approximately 35 years ago and has the benefit of gas fired central heating and part double glazed windows. The accommodation is arranged as follows:-





## ON THE GROUND FLOOR

### Entrance Porch

Double glazed entrance door.

### Attractive Lounge 14' x 13'6" (4.27m x 4.11m)

Double glazed window. Double radiator. Hard wood flooring. Staircase to first floor. Dividing arch to ....

### Dining Room 10'3" x 7'3" (3.12m x 2.21m)

Hard wood flooring. Part panelled walls. Radiator. Double glazed patio doors to ....

### Conservatory 12'3" x 7'6" (3.73m x 2.29m)

Laminate flooring. Door to garden.

### Kitchen 12' x 6' (3.66m x 1.83m)

Attractive cream doored units comprising 1½ bowl sink unit with cupboards and drawers under. Floor cupboards with shelves, drawers and working surface above. Matching wall cupboards. Cooker hood. Tiled floor. Tiled walls. Window.

### Utility Room 8'6" x 5' (2.59m x 1.52m)

Window. Plumbing for automatic washing machine.

### Study 11'3" x 8' (3.43m x 2.44m)

## ON THE FIRST FLOOR

### Landing

Airing cupboard housing lagged hot water tank.

### Bedroom One 13'9" x 8'6" (4.19m x 2.59m)

Double glazed window. Radiator.

### Bedroom Two 9'3" x 6'9" (2.82m x 2.06m)

Double glazed window. Radiator. Vinyl flooring.

### Bedroom Three 7'6" x 6'9" (2.29m x 2.06m)

Double glazed window. Radiator. Vinyl flooring.

### Bathroom

White suite comprising panelled bath. Pedestal wash hand basin. Low level WC. Double radiator. Panelled walls. Vinyl floor covering. Double glazed window.

## OUTSIDE

### Small Garage 14'3" x 7'6" (4.34m x 2.29m)

Up and over door to front. There is a useful parking area in front of the garage.

### Gardens

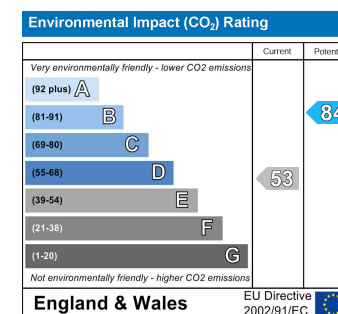
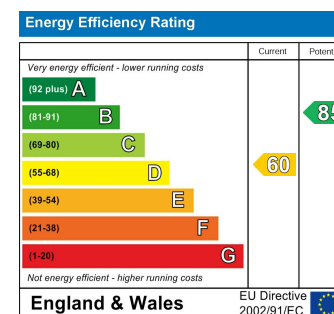
The FRONT GARDEN is laid to lawn with various trees and shrubs. The REAR GARDEN is fully enclosed offering a high degree of seclusion and comprises lawned area with various trees, shrubs and flower borders. Paved patio.

## VIEWING

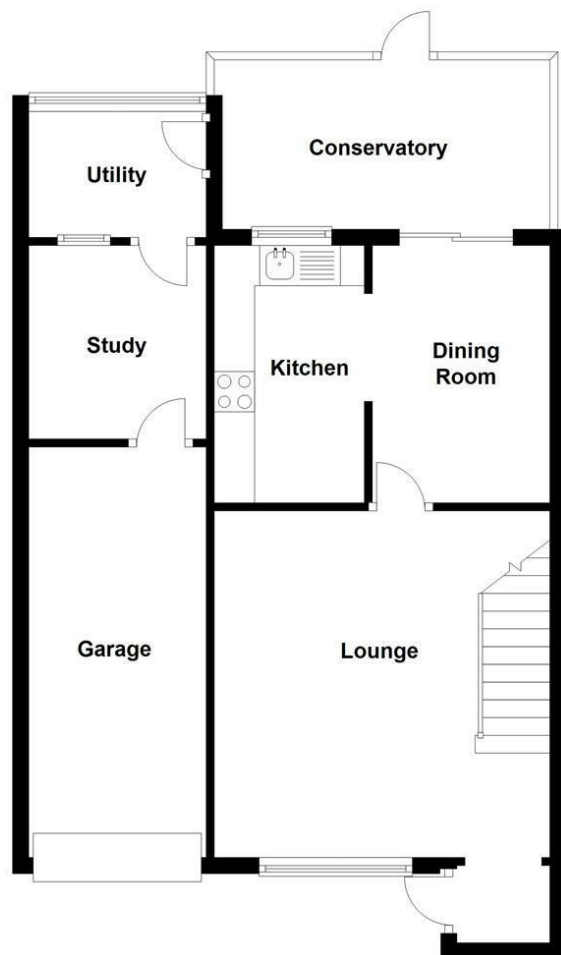
Strictly by arrangement with the Agent's Bearsted Office, 132 Ashford Road, Bearsted, Maidstone, Kent ME14 4LX. Tel: 01622 739574.

## DIRECTIONS

From the Agent's Bearsted office proceed towards Maidstone on the A20 Ashford Road. At the first set of traffic lights, turn left into Willington Street. At the bottom of the hill, turn left into Deringwood Drive. Take the 4th turning on the right into Church Road, 1st left into Monkdown and 2nd right into Rhodewood Close, where number 12 will be found towards the end of the cul-de-sac.



**Ground Floor**



**First Floor**

