



**3 BED PENTHOUSE WITH VIEWS WEST ACROSS VICTORIAN ROOFTOPS TO THE SHARD. TATE MODERN AND LONDON EYE**

PENTHOUSE  
WILDS RENTS, LONDON, SE1

**Guide Price £2,250,000 - Leasehold**



## 3 BED PENTHOUSE WITH VIEWS WEST ACROSS VICTORIAN ROOFTOPS TO SHARD, TATE MODERN AND LONDON EYE

### PENTHOUSE

WILDS RENTS, LONDON, SE1

**Guide Price £2,250,000 - Leasehold**

- Reception Room • Kitchen • 3 Bedrooms
- 3 Bathrooms • Guest WC • 2 terraces
- Direct Lift Access • Top floor • Decked terrace
- Wood burner

- EPC Rating = To be confirmed
- Council Tax = To be confirmed

### Description

A beautifully designed, three bedroom, three bathroom penthouse with direct lift access, situated on the top of this fine conversion, conveniently located within a courtyard setting with an allocated parking space. The property has been finished to the highest possible specification including; Air conditioning, under floor heating, an exquisite combination of polished concrete, reclaimed teak flooring, Italian imported limestone, a wood burner in the reception room, bespoke cedar wood carpentry in the bedrooms, Miele appliances, a steam oven and a huge Sub Zero fridge/freezer in the kitchen. All mod cons that lend towards truly luxurious living.

The property briefly comprises bedroom suites on the third floor of the development including: Master bedroom featuring a West Facing balcony with views of the Shard and London Eye, bespoke wardrobes, a luxurious en suite with bath and shower; The second bedroom features the same bespoke cedar wood wardrobe, access to the balcony and en suite double shower room; Third bedroom also boasts built in wardrobes, and en suite shower room.

Leading up the staircase, there is a guest WC, utility room with double sink and a stunning bespoke kitchen which leads onto the reception room that features a wood burner and 214 sq ft decked terrace overlooking the iconic London skyline to the West.

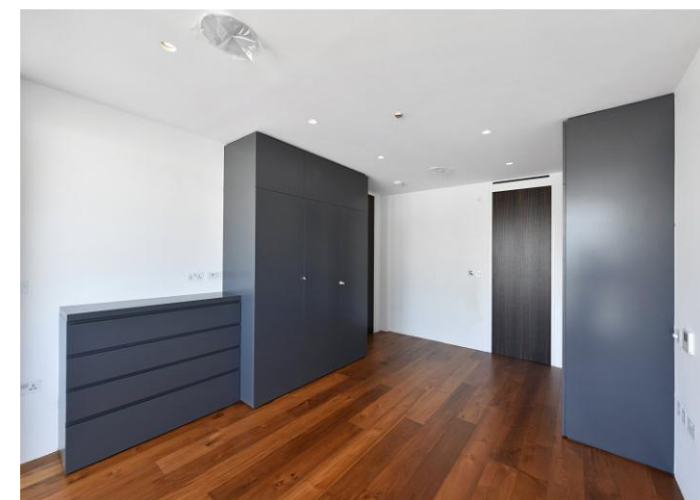
Wilds Rents, is within striking distance of Bermondsey Street with it's eclectic mix of restaurants, bars and eateries where culture, art, trend and tradition merge into a diversity of community living. London Bridge (BR to Kent, the South Coast and Gatwick) and the Jubilee line for the City, Canary Wharf and the West End is the closest underground.

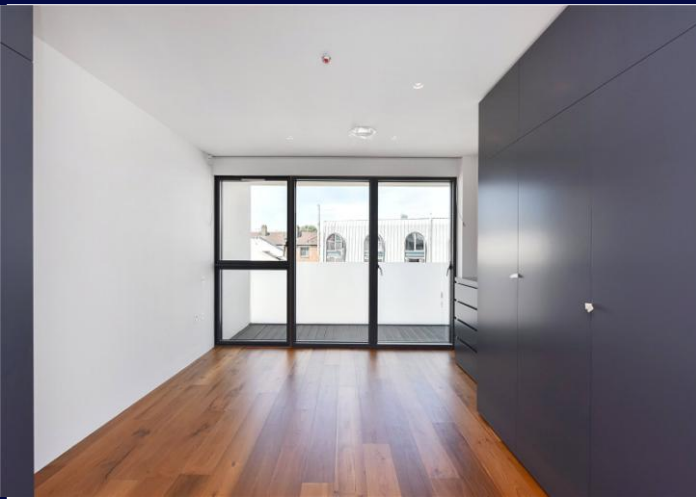
### Energy Performance

A copy of the full Energy Performance Certificate is available on request.

### Viewing

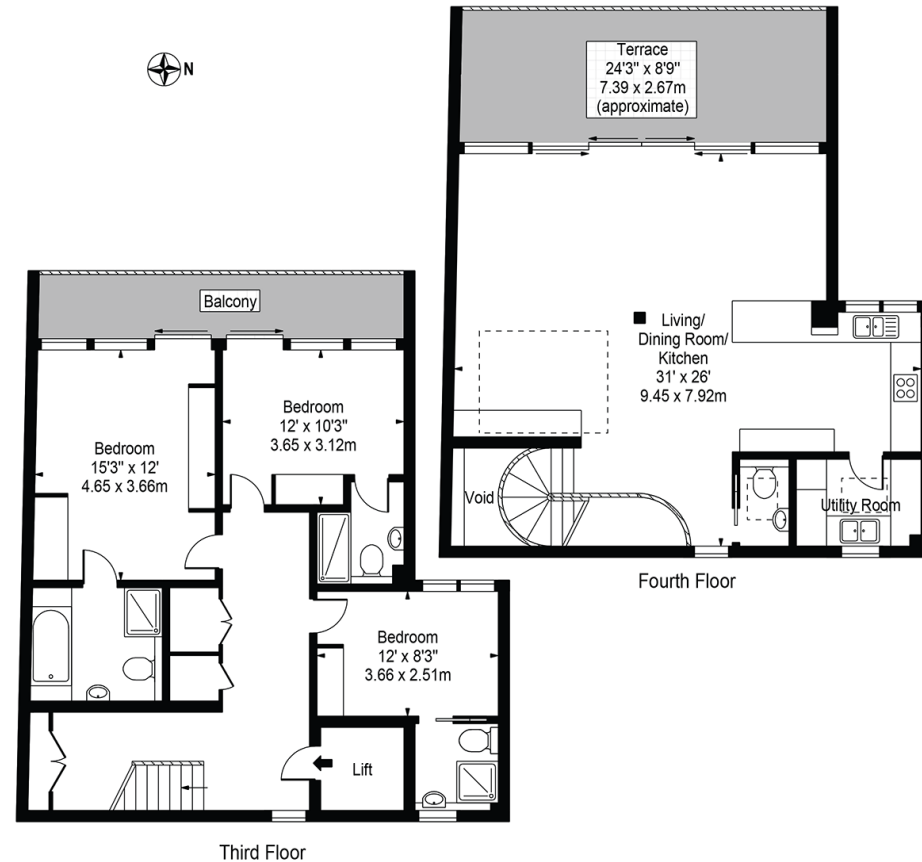
Strictly by appointment with Savills.





## Wild's Rents, SE1 4QG

Approx. Gross Internal Area 1546 Sq Ft - 143.63 Sq M



Third Floor

For Illustration Purposes Only - Not To Scale

This floor plan should be used as a general outline for guidance only and does not constitute in whole or in part an offer or contract. Any intending purchaser or lessee should satisfy themselves by inspection, searches, enquiries and full survey as to the correctness of each statement. Any areas, measurements or distances quoted are approximate and should not be used to value a property or be the basis of any sale or let.



**Wapping**  
Laura Laws  
llaws@savills.com  
**+44 (0) 20 7456 6800**

**savills.co.uk**

---

Important notice: Savills, their clients and any joint agents give notice that: 1: They are not authorised to make or give any representations or warranties in relation to the property either here or elsewhere, either on their own behalf or on behalf of their client or otherwise. They assume no responsibility for any statement that may be made in these particulars. These particulars do not form part of any offer or contract and must not be relied upon as statements or representations of fact. 2: Any areas, measurements or distances are approximate. The text, photographs and plans are for guidance only and are not necessarily comprehensive. It should not be assumed that the property has all necessary planning, building regulation or other consents and Savills have not tested any services, equipment or facilities. Purchasers must satisfy themselves by inspection or otherwise. 20170714MRJV