





- Top Floor
- Close To Amenities
- Double Glazing
- Two Bedrooms
- Allocated Parking
- Viewing Recommended

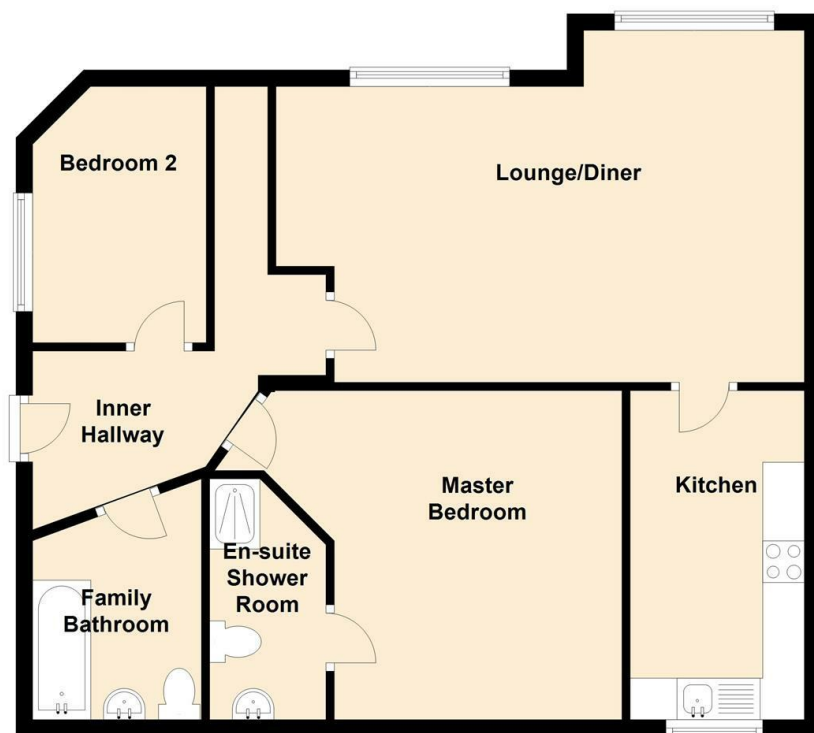




The top floor apartment will appeal to a variety of buyers, located within ease of access to the Regent Centre, Metro Links and well regarded schools, the property would naturally be of interest to professional, couples, the first time buyer but also the buy to let investor. With allocated parking bay, lift access and communal gardens. Internally, the property boasts modern, light open aspect lounge/diner, with a fitted kitchen, two double bedrooms, with en-suite shower to the master bedroom and complimented with a family bathroom. Viewings are by appointment only, please call Jan Forster Estates today for your viewing.



Ground Floor

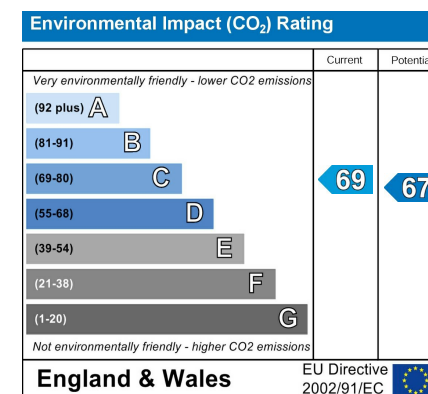
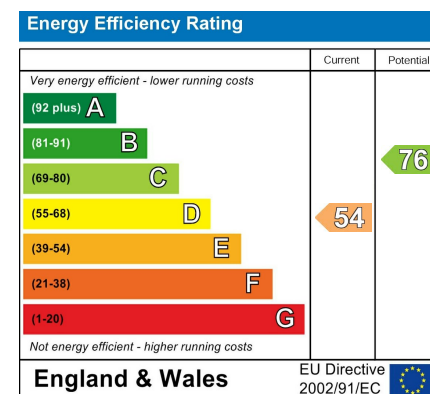


Lounge 21'0" x 13'10" (6.41 x 4.24)

Kitchen 13'1" x 6'9" (3.99 x 2.08)

Master Bedroom 11'1" x 10'3" (3.40 x 3.13)

Bedroom Two 7'9" x 10'0" (2.37 x 3.07)



The difference between house and home

You may download, store and use the material for your own personal use and research. You may not republish, retransmit, redistribute or otherwise make the material available to any party or make the same available on any website, online service or bulletin board of your own or of any other party or make the same available in hard copy or in any other media without the website owner's express prior written consent. The website owner's copyright must remain on all reproductions of material taken from this website.

Gosforth 0191 236 2070
 Newcastle 0191 284 4050
 Forest Hall 0191 605 3134
 High Heaton 0191 270 1122
 Low Fell 0191 487 0800
 Tynemouth 0191 257 2000
 Whitley Bay 0191 251 3000
 Property Management Centre 0191 236 2680



www.janforsterstates.com

