



5

Stansfield Drive

Norden Rochdale OL11 5RX

£234,950

[www.adamsons-estates.co.uk](http://www.adamsons-estates.co.uk)





## 5 Stansfield Drive

Norden Rochdale

£234,950

- 4 bed detached (3 double)
- 2 reception rooms
- Ground floor WC
- Integral garage
- Close to Whittaker Moss
- Corner plot





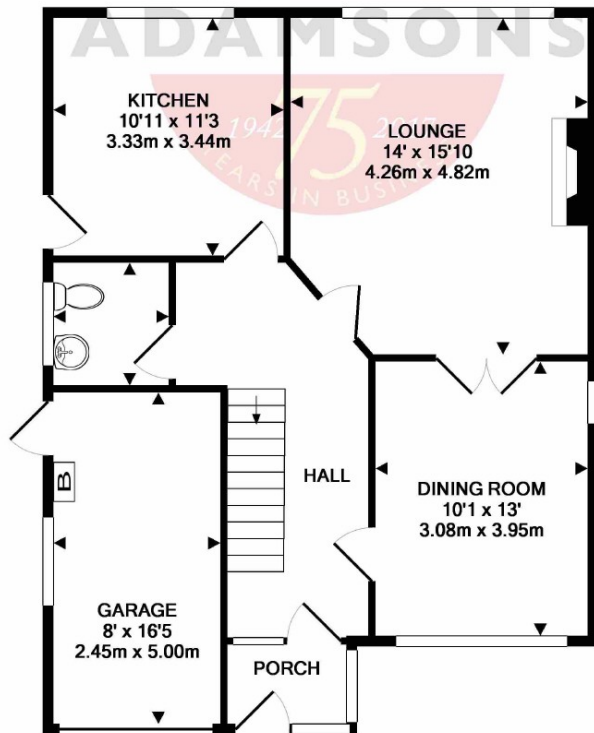
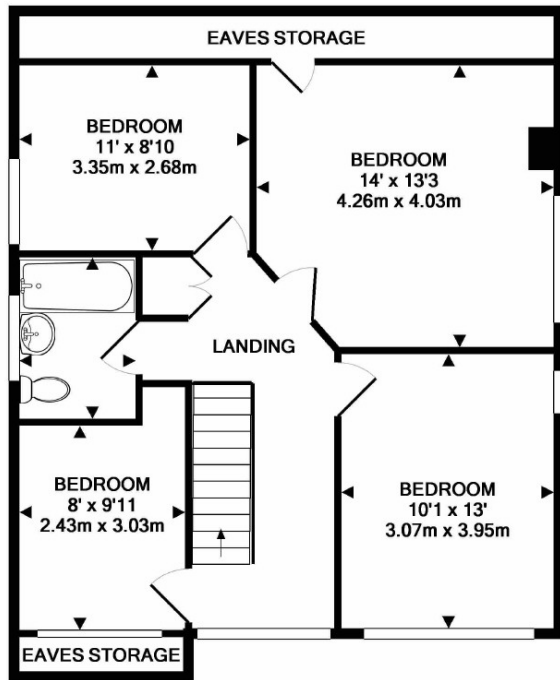
Situated on a corner plot on a popular development within a short walk of Whittaker Moss primary school, a spacious 4 bedroom detached house with 2 reception rooms and integral garage. The property is also within easy reach of additional popular primary schools, shops, restaurants and beautiful countryside.

The accommodation comprises: PORCH with uPVC double glazing and tiled floor; good sized HALL with open plan staircase; CLOAKROOM with modern WC and washbasin, fitted cupboards and coat hooks; LOUNGE with oak style fireplace and open coal effect living flame gas fire; DINING ROOM with double doors from lounge and separate door to hall; KITCHEN with good range of fitted units, integral electric double oven, gas hob, extractor hood and plumbing for washing machine; good sized LANDING with spindled balustrade; 3 DOUBLE BEDROOMS AND 1 SINGLE BEDROOM; BATHROOM with modern cream suite, plumbed shower over the bath and part tiled walls; EAVES STORAGE. There is an integral SINGLE GARAGE and gardens to front, side and rear.

Freehold; Built circa 1969; uPVC double glazed; Gas central heating (condensing boiler with hot water cylinder); Cavity wall insulation; Loft insulation.







Whilst every attempt has been made to ensure the accuracy of the floor plan contained here, measurements of doors, windows, rooms and any other items are approximate and no responsibility is taken for any error, omission, or mis-statement. This plan is for illustrative purposes only and should be used as such by any prospective purchaser. The services, systems and appliances shown have not been tested and no guarantee as to their operability or efficiency can be given  
Made with Metropix ©2017



A family run business since 1942

109 Yorkshire Street Rochdale OL16 1YJ

T: 01706 522424

E: sales@adamsons-estates.co.uk

Viewing by appointment via agent on 01706 522424

You may download, store and use the material for your own personal use and research. You may not republish, retransmit, redistribute or otherwise make the material available to any party or make the same available on any website, online service or bulletin board of your own or of any other party or make the

