

whiteley helyar



960 ft²



2 bedrooms



2 bathrooms



*private
parking space*

£425,000

31 Northanger Court, Grove Street, Bath, BA2 6PE

31 Northanger Court, Grove Street, Bath, BA2 6PE

DESCRIPTION

A super duplex apartment offering versatile accommodation including a spacious mezzanine bedroom/workspace, with secure private parking within this highly sought after riverside development in the heart of the city.

ACCOMMODATION

spacious hallway
kitchen
double glazing

27' triple aspect sitting/dining room
bathroom
gas fired heating

2 bedrooms
en-suite shower room

EXTERNALLY

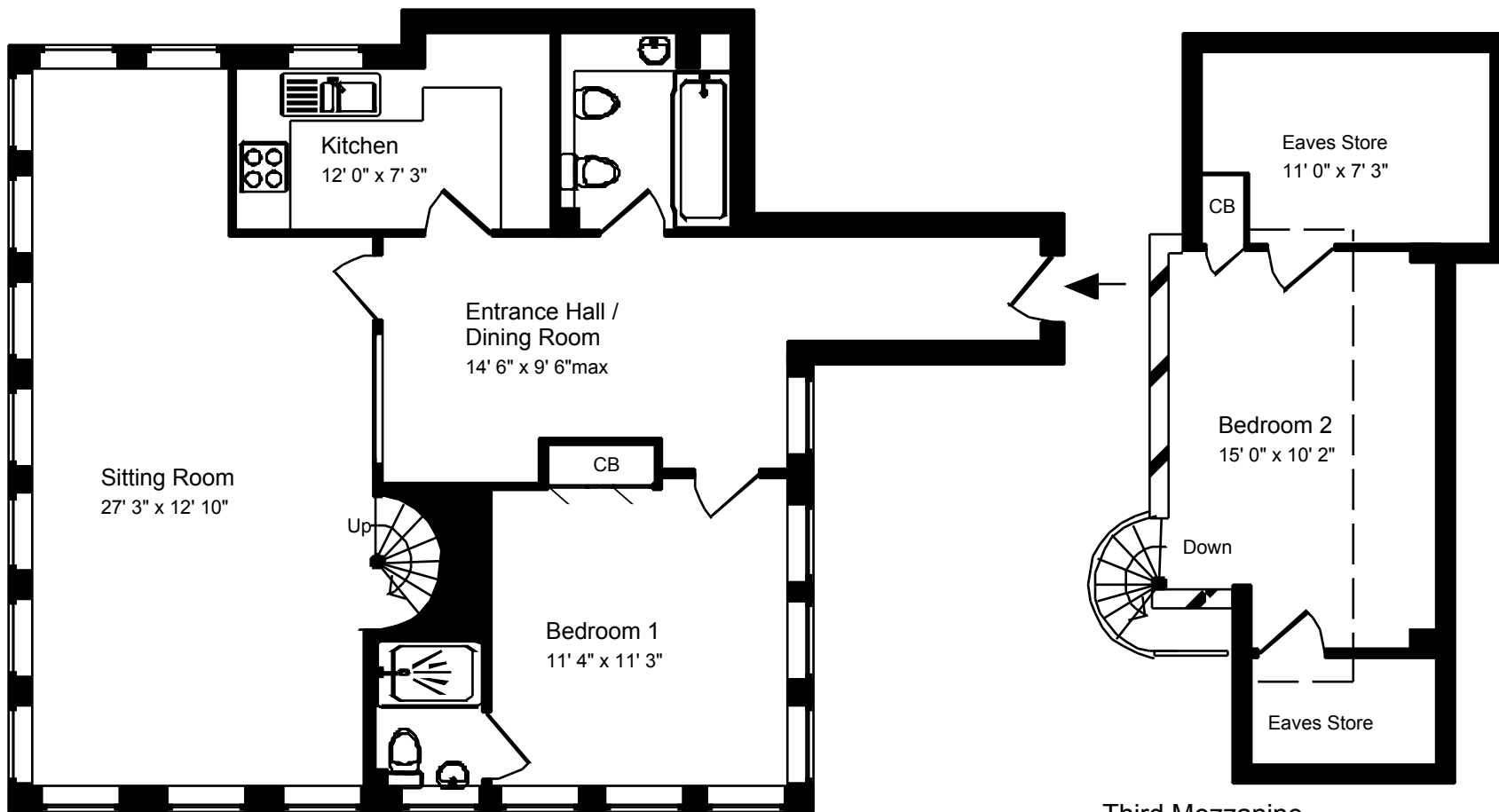
The apartment stands in attractive communal grounds running down to the river, with a large paved sun terrace and a pretty garden area. Private parking space within the underground secure communal garage.

LOCATION

Northanger Court occupies an enviable location, adjacent to the River Avon; just a short walk from the very heart of Bath along with Bath Spa railway station and the countless shops and amenities Bath has to offer.

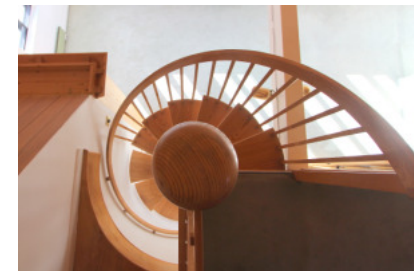




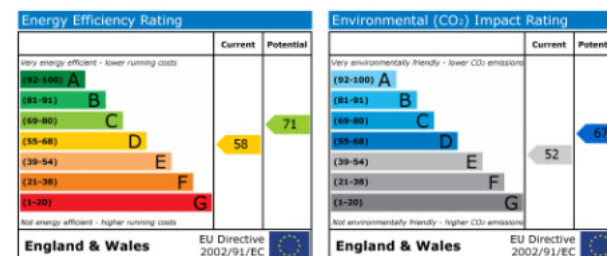


Third Floor

Approx. Gross Internal Floor Area 960 Sq. Ft. / 89 Sq. M
 Includes Conservatories. Excludes Garages, Porches etc. unless stated
 For identification purposes only. Not to scale. Copyright Jemesis Ltd 2017
 Drawing Number: 172-966j
 31 Northanger Court, Bath, BA2 6PE.



Third Mezzanine



01225 447544
 sales@whitelehyar.net
 6 Princes Buildings, Bath BA1 2ED
 www.whitelehyar.net