

# whiteley helyar



840 ft<sup>2</sup>



2 bedrooms



1 bathroom



residents permit

Guide Price                      £250,000

Top Floor Flat, 131 Lower Bristol Road, Bath, BA2 3DL



Top Floor Flat, 131 Lower Bristol Road, Bath, BA2 3DL

DESCRIPTION

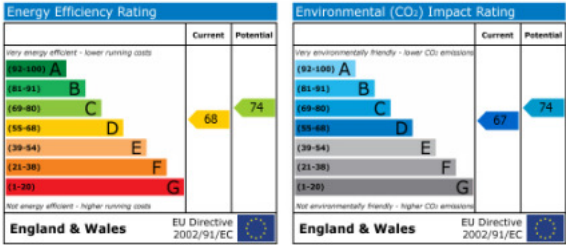
A well-presented two double bedroom split level apartment ideally positioned within half a mile of the city centre and easy reach of Bath Spa railway station and Green Park shops.

ACCOMMODATION

- entrance hall
- 15' sitting/dining room with feature fireplace and bay window
- stylish kitchen/breakfast room
- 2 double bedrooms
- spacious bathroom with bath and shower cubide
- gas fired heating
- double glazing
- residents parking permit

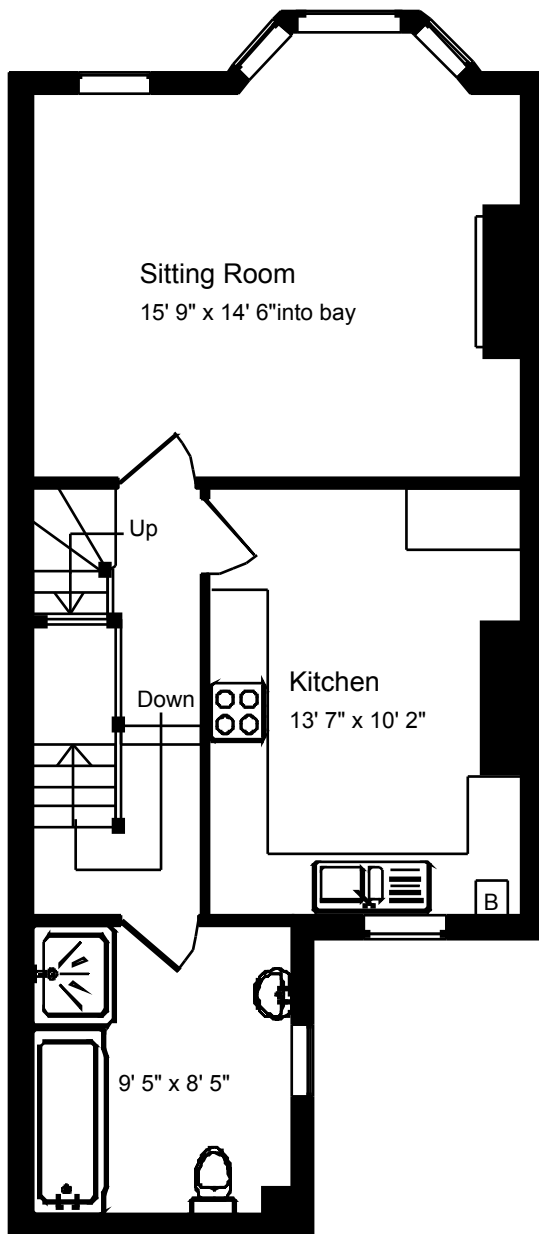
LOCATION

The property is located on the south side of Bath, ideally positioned for access to transport links including regular bus services and the high speed rail links at Bath Spa Station. The city centre is also within easy reach with its vast array of shops and amenities.

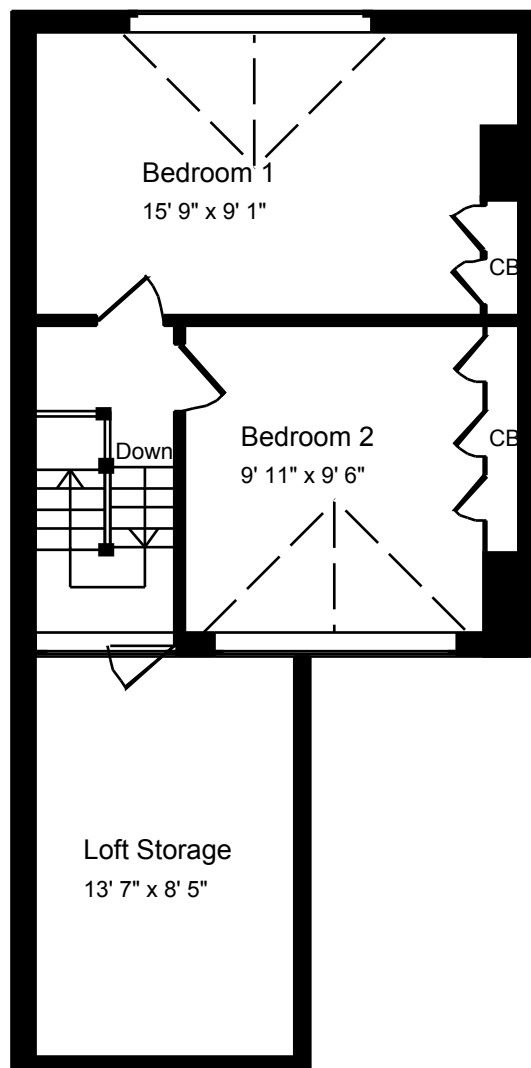








First Floor



Second Floor



Approx. Gross Internal Floor Area 840 Sq. Ft. / 78 Sq. M  
 Includes Conservatories. Excludes Garages, Porches etc. unless stated  
 For identification purposes only. Not to scale. Copyright Jemesis Ltd 2017  
 Drawing Number:172-967j  
 Top Floor Flat, 131 Lower Bristol Road, Bath, BA2 3DL.



01225 447544  
 sales@whiteleyhellyar.net  
 6 Princes Buildings, Bath BA1 2ED  
 www.whiteleyhellyar.net