



Orchard House
Ravenscliffe Road, Kidsgrove



INDEPENDENT ESTATE AGENTS

www.stephensonbrowne.co.uk



Orchard House is not like any other house; Orchard House is true one off, a delightful setting surrounded by woodland, a private approach behind electronic gated entry, a quite unbelievable plot and a simply stunning interior, Orchard House ladies and gentlemen is a home which Stephenson Browne invite further enquires on in order to fully appreciate the opportunity the sale of this bespoke family home represents.

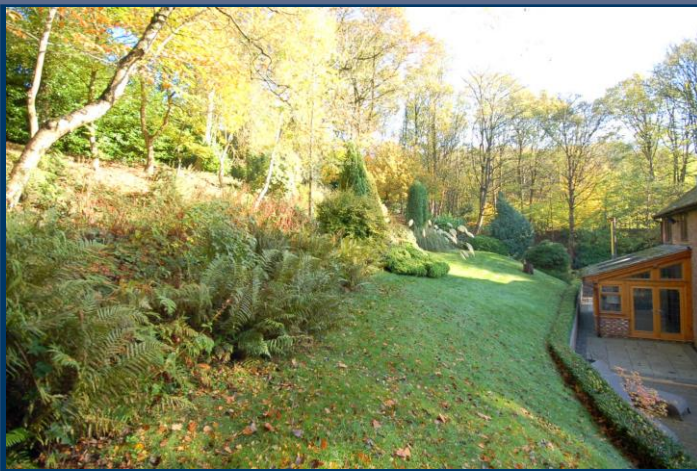
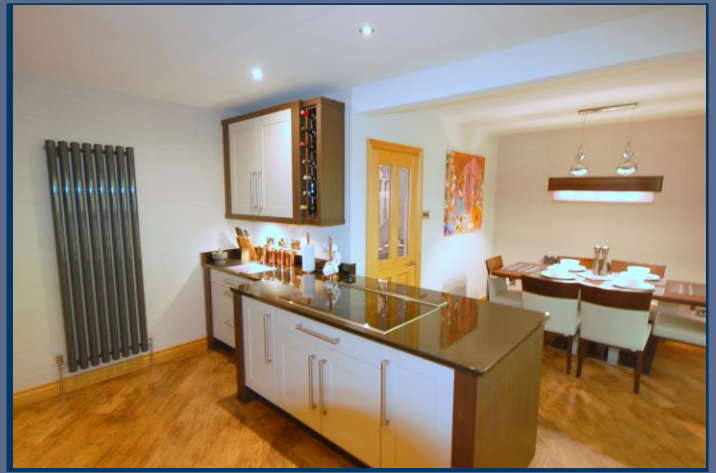
They say a picture is worth a thousand words and we hope that is the case here as to put into words the level of work carried out by the current vendor is not going to be easy..... A polite request to enjoy the pictures is one we put to you.

That said, we do realise the importance of highlighting certain aspects of this residence so let us begin; An extension over the Double Garage has created what many would be delighted to call their Master Bedroom, it however is not! What we have is a splendid Guest Suite or for the very fortunate chosen child, just a great bedroom with en-suite.

The Master Bedroom like the Guest Suite affords the luxury of a balcony with the Master Bedroom also impressing with the expected en-suite but also the walk in dressing room. Continuing, three further double bedrooms are provided and then we arrive at the family bathroom..... just look!

Guide Price: £475,000





Downstairs, we feel a little bit sorry for the lounge, don't get us wrong, the room eludes elegance and the radiator, never have we been so excited about a radiator, it also measures in at a very impressive 26'2ft in length but were just not sure you'll spend much time in there when you consider what else Orchard has up its sleeve for you....

Joking aside, it's a very spacious lounge and perhaps a room to be used to unwind in later on in the day.

Going above expectations is the addition of the Oak Framed Garden Room, linking effortlessly with the rear of the home to offer the much desired open plan dining, kitchen, family living. You'll see again from the pictures that we have no standard fitting in sight, seen the log burner? Next, you know it's a high spec kitchen when the extractor fan lifts from within the work-surface..... Neff appliances also include a warming drawer and Coffee machine!

Completing the accommodation, we find a downstairs WC, separate utility which provided integral access to the double garage and lastly, a very private study!

Not your average house and just in case you were wondering..... potentially, you can move in and take it as you see it, trust us, when you take on board the amount of money spent on furnishing the home, why not just literally just put the kettle on!





INDEPENDENT ESTATE AGENTS

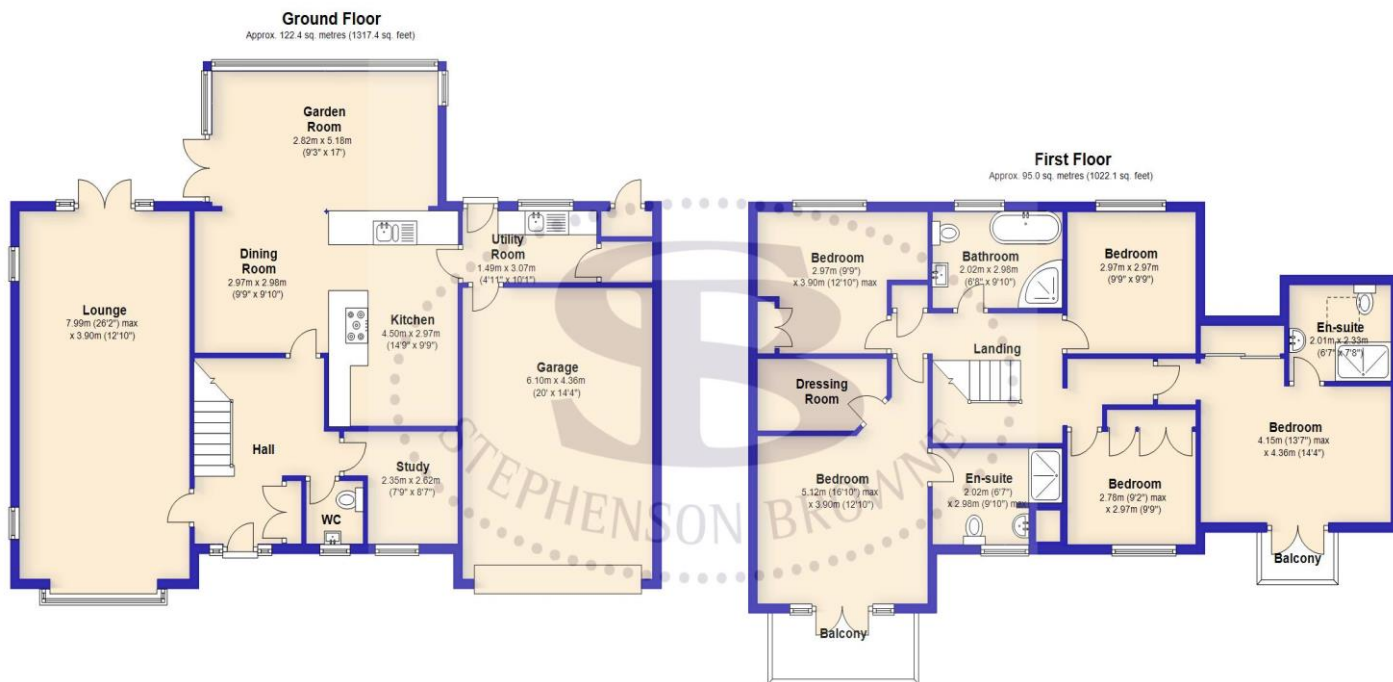
www.stephensonbrowne.co.uk



13 Crewe Road, Alsager, ST7 2EW

Tel: 01270 883130

View all of our properties at
www.stephensonbrowne.co.uk



Total area: approx. 217.3 sq. metres (2339.5 sq. feet)

We accept no responsibility for any mistake or inaccuracy contained within the floorplan. The floorplan is provided as a guide only and should be taken as an illustration only. The measurements, contents and positioning are approximations only and provided as a guidance tool and not an exact replication of the property.
Plan produced using PlanUp.



INDEPENDENT ESTATE AGENTS

www.stephensonbrowne.co.uk



13 Crewe Road, Alsager, ST7 2EW

Tel: 01270 883130

View all of our properties at
www.stephensonbrowne.co.uk