



40 Fitzwilliam Court, Bartin Close, Sheffield, S11 9GE

Saxton Mee

40 Fitzwilliam Court

Bartin Close

Offers around

£125,000

Top floor apartment in this popular over 60's development.

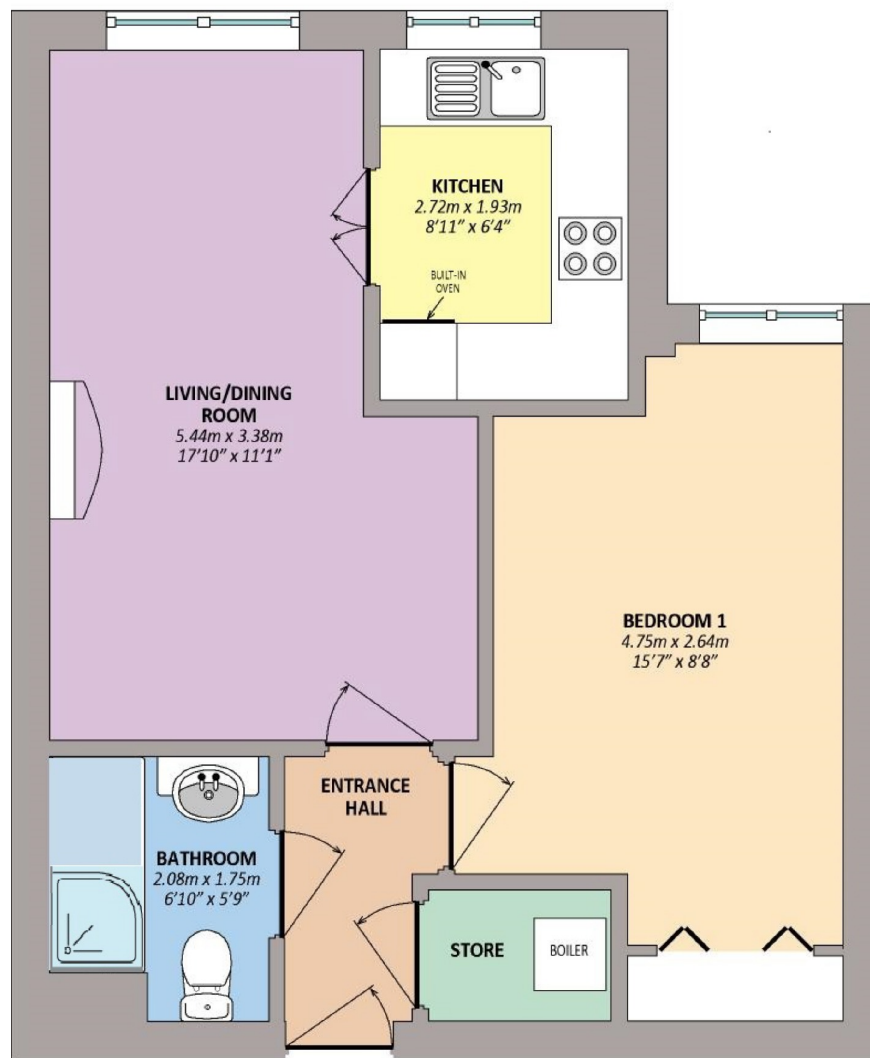
Occupying an enviable position on the top floor of this popular over 60's retirement development and enjoying superb open views from all the rooms. Tastefully presented throughout, the development has the benefit of a lift and an on site manager together with a communal sitting room, laundry room and guest suite. Offered for sale with no onward chain and briefly comprising: communal entrance, lift access to the fifth floor. Reception hallway, fitted kitchen, living/dining room, double bedroom with built in wardrobes, bathroom with three piece suite. Outside: communal landscaped gardens and parking on a first come, first served basis.

- Over 60's Development
- Top Floor Apartment
- Envable Position
- On Site Manager
- Lift Access
- Communal Gardens
- No Onward Chain
- Superb Open Views
- Additional Communal Facilities
- Energy Rating C
- Viewing: Banner Cross Office





40 FITZWILLIAM COURT BARTIN CLOSE



© David Kavanagh Plan Drawing Ltd. 2014. 01246292916

While we endeavour to make our sales particulars fair, accurate and reliable, they are only a general guide to the property and, accordingly, if there is any point, which is of particular importance to you, please contact the relevant office. The Agents have not tested any apparatus, equipment, fittings or services and so cannot verify they are in working order. The buyer is advised to obtain verification. Please note all the measurement details are approximate and should not be relied upon as exact. All plans, floor plans and maps are for guidance purposes only and are not to scale. Under no circumstances should they be relied upon as exact or for use in planning carpets and other such fixtures, fittings or furnishings. YOUR HOME IS AT RISK IF YOU DO NOT KEEP UP REPAYMENTS ON A MORTGAGE OR OTHER LOAN SECURED ON IT. 'A Life Assurance policy may be requested.' 'Written Quotations of credit terms available on request.'

Banner Cross
T: 0114 268 3241
E: bannercross@saxtonmee.co.uk
www.saxtonmee.co.uk

Dronfield
T: 01246 290992
E: dronfield@saxtonmee.co.uk

Hathersage
T: 01433 650009
E: hathersage@saxtonmee.co.uk

Bakewell
T: 01629 815307
E: bakewell@saxtonmee.co.uk

Matlock
T: 01629 828250
E: matlock@saxtonmee.co.uk

