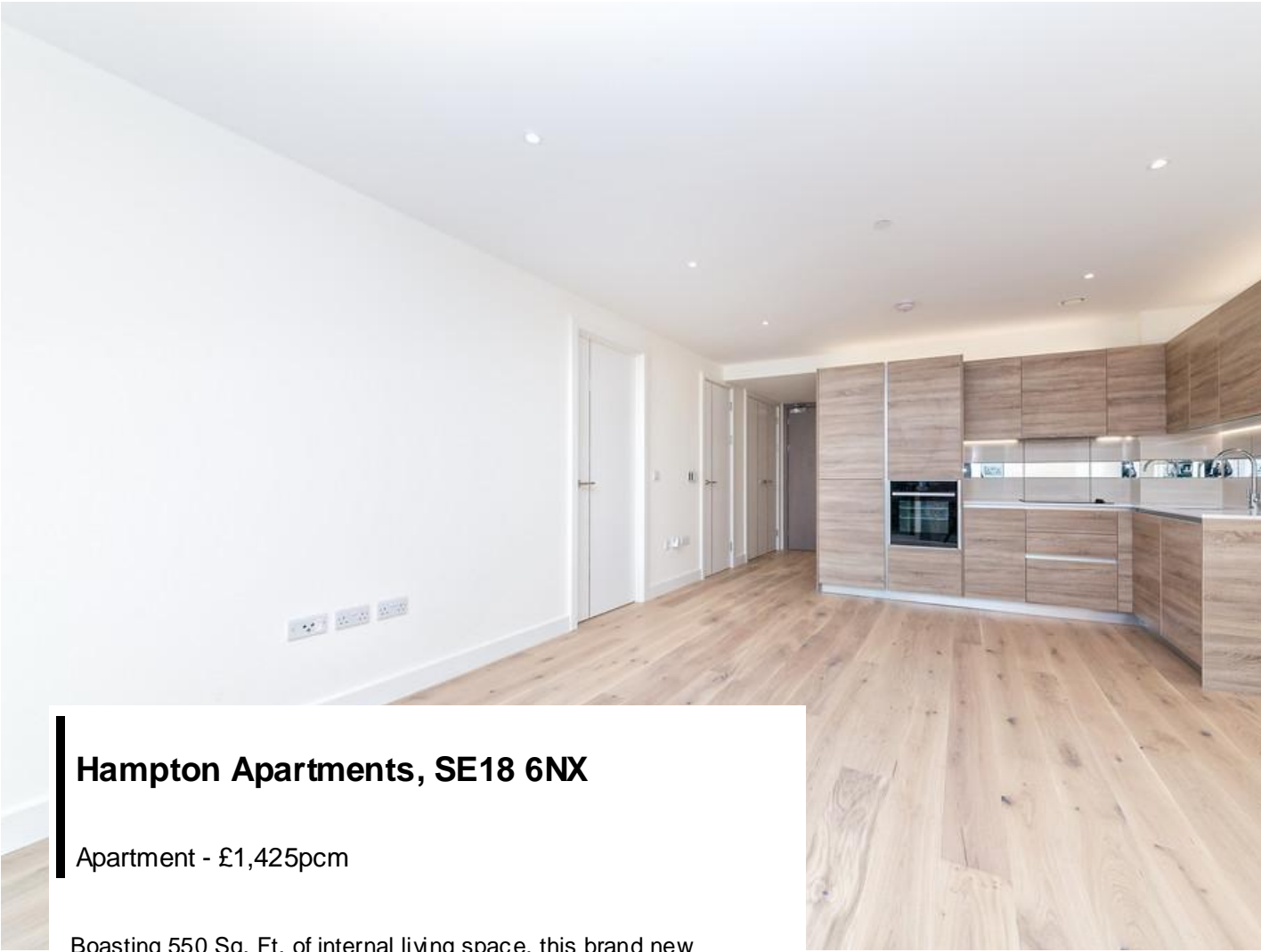


www.madisonbrook.com



# Hampton Apartments, London, SE18 6NX

Apartment - £1,425pcm



## Hampton Apartments, SE18 6NX

Apartment - £1,425pcm

Boasting 550 Sq. Ft. of internal living space, this brand new eleventh floor apartment is situated within Hampton Apartments in the popular Royal Arsenal Riverside development.

Comprised of a spacious open-plan reception with fully fitted & integrated kitchen; a generous double bedroom with built in wardrobe space; as well as an abundance of built in storage to the hallway & a sleek, modern family bathroom. Additional benefits include the private balcony with stunning views across The River Thames.

Whilst being only moments from Woolwich Arsenal DLR (future crossrail station), you also have a wealth of amenities on site including the 24 hour concierge, exclusive resident's gymnasium, cafes, restaurants, local supermarkets and much more.

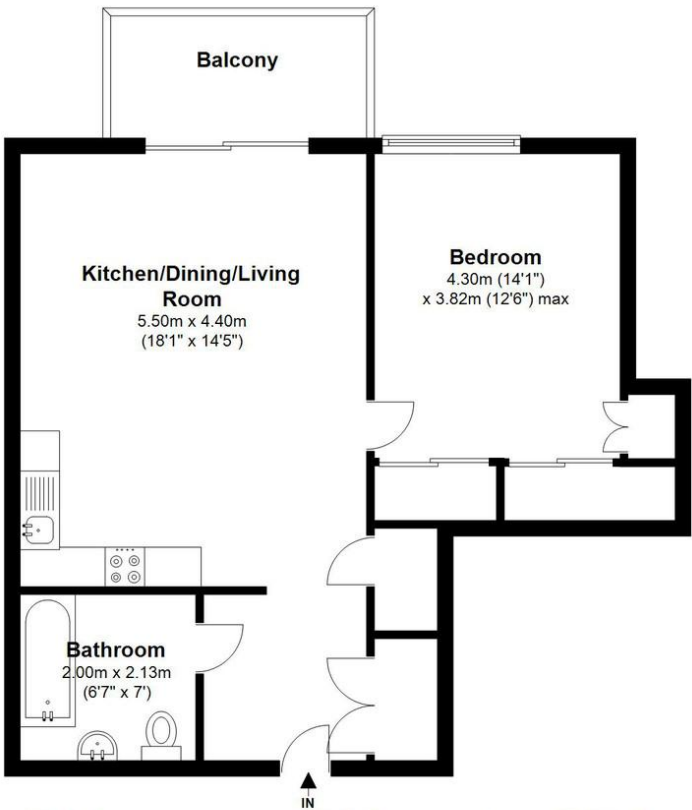
### KEY FEATURES

- Brand New One Bedroom Apartment
- Eleventh Floor Location
- 550 Sq. Ft. Internally
- 24 Hour Concierge Service
- Moments From Woolwich Arsenal DLR
- Available Immediately
- Secure Parking Available at Additional Cost
- Administration Fees: £200.00 Per Property

Local Authority      Greenwich London Borough Council  
Council Tax Band      C

### Eleventh Floor

Approx. 51.1 sq. metres (550.1 sq. feet)



Total area: approx. 51.1 sq. metres (550.1 sq. feet)

This floor plan should be used as a general outline for guidance only and does not constitute in whole or in part an offer or contract. Any intending purchaser or lessee should satisfy themselves by inspection, searches, enquiries and full survey as to correctness of each statement. Any areas, measurements or distances quoted are approximate.  
88Photo.co.uk

Madison Brook  
Greenwich  
Horseferry Place,  
London, SE10 9BB

greenwich@madisonbrook.com  
020 3946 6100

We have prepared these property particulars as a general guide to a broad description of the property. They are not intended to constitute part of an offer or contract. We have not carried out a structural survey and the services, appliances and specific fittings have not been tested. All photographs, measurements, floorplans and distances referred to are given as a guide only and should not be relied upon for the purchase of carpets or any other fixtures or fittings. Lease details, service charges and ground rent (where applicable) and council tax are given as a guide only and should be checked and confirmed by your Solicitor prior to exchange of contracts. The copyright of all details, photographs and floorplans remain exclusive to Madison Brook International.

**MADISON BROOK**  
INTERNATIONAL