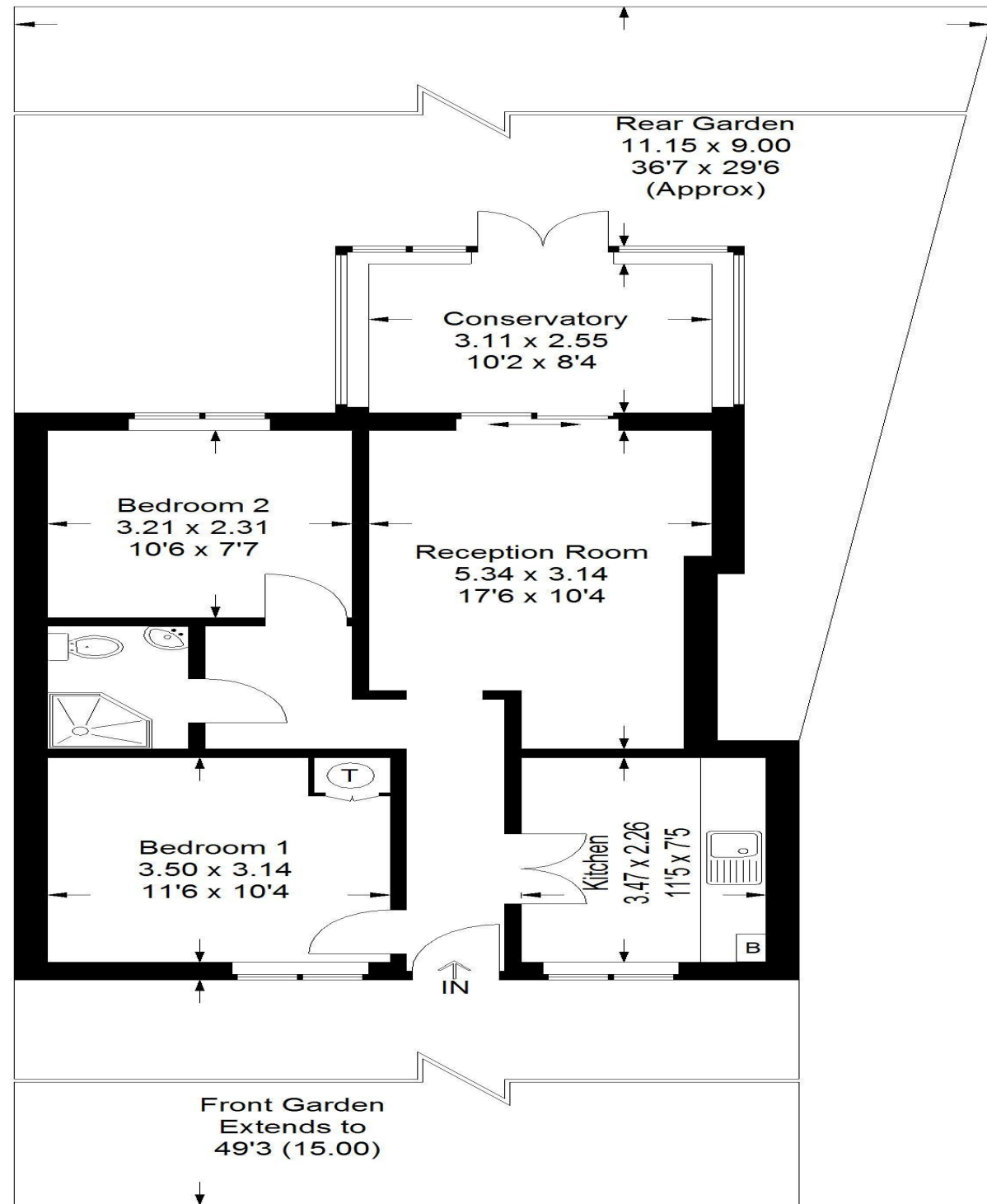


## Uxbridge Road, Hampton

Approx . Gross Internal Area = 65.8 sq mt / 708 sq ft



**Featherstone Leigh Ltd**

Every attempt is made to assure accuracy, however measurements are approximate and for illustrative purposes only. (392851)

**Teddington - 020 8977 8118**

35 High Street, Teddington, TW11 8ET



## Uxbridge Road, Hampton Hill, TW12

This period bungalow provides an excellent opportunity to lend your own style and vision to what is essentially a property in need of complete modernisation and renovation. It is well set back from the road with a 50ft front garden which offers enough space to park a couple of cars. To the rear there is a private rear garden extending nearly 40ft from the end of a conservatory extension. Internally there is a kitchen and bedroom to the front and the living room and second bedroom situated to the rear. Offered to the market with no onward chain. Please note that due to the circumstances of the seller it is a conditional requirement to keep this property advertised up to the point of exchange of contracts. EPC - TBC

**Asking Price: £449,950 (Freehold)**



