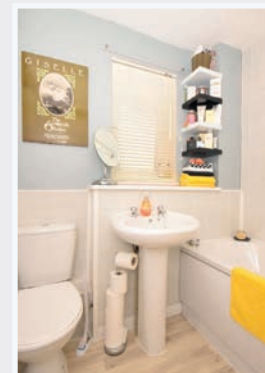
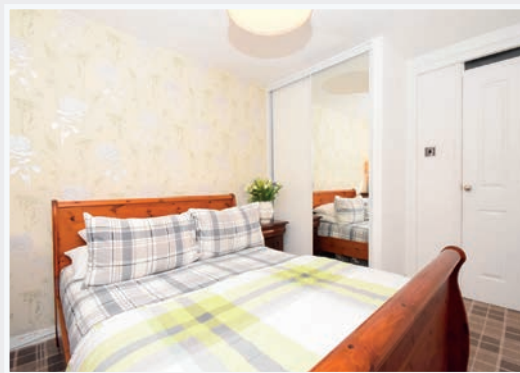




To view the HD video [click here](#)

Flat 0/2, Holmlea Road **Cathcart**

Flat 0/2, 53 Holmlea Road, Cathcart, Glasgow G44 4BL



Superb modern one bedroom ground floor apartment located in a popular development close to all local amenities and transport links.

The property has been tastefully upgraded throughout and is brought to market in excellent order.

From security entrance into to well kept communal hallway, the property comprises; reception hallway with storage off, good sized lounge, attractive modern fitted kitchen, double sized bedroom with integrated

mirrored wardrobes and a well presented bathroom with three piece suite including electric shower over bath. There is a large utility cupboard off the bathroom providing further storage space.

Features of the property include gas central heating, double glazing, secure entry and ample residents parking.

EER rating : Band C

Property reference : JW8083

Connect & Share. View the video in HD, simply download our APP, hover over the cover and see it come to life.

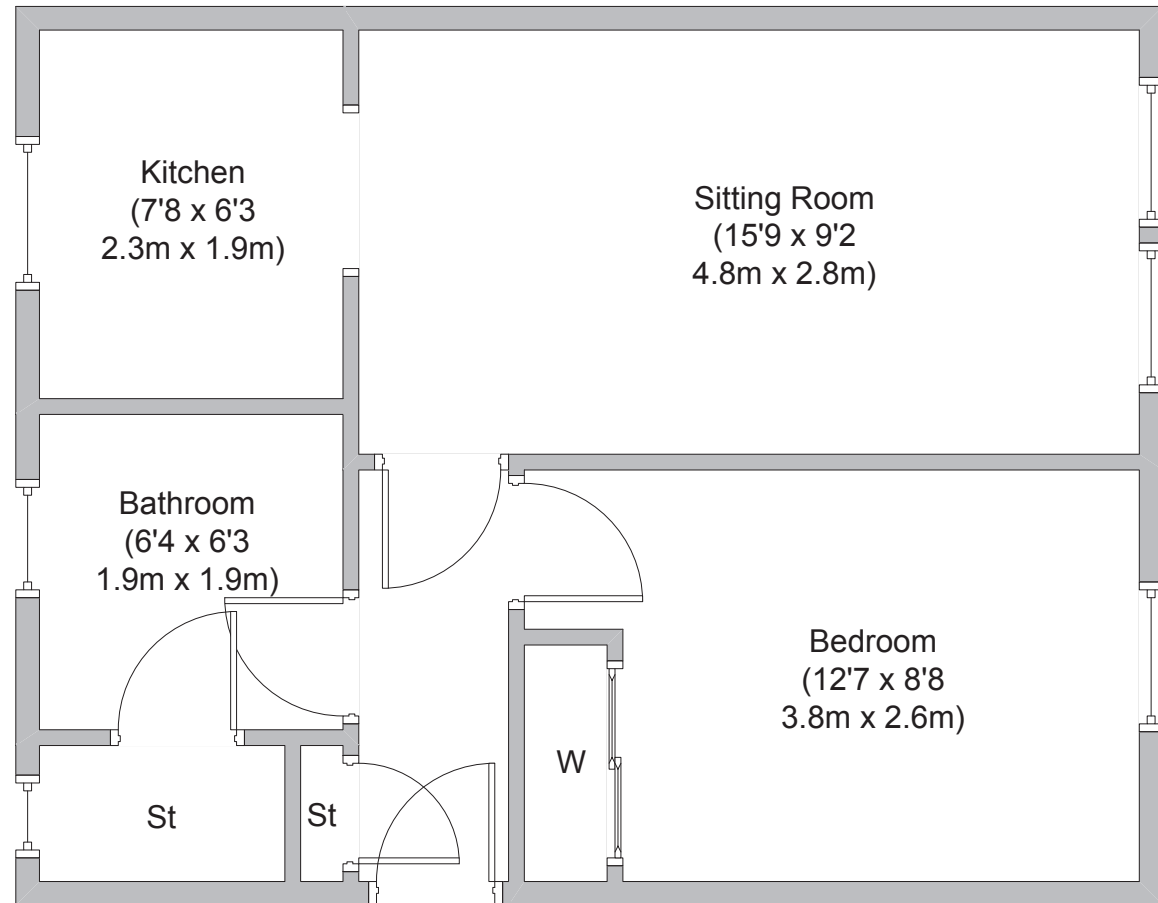






Property location

Located on Holmlea Road, the property is situated minutes from a varied selection of local amenities including shops, cafes, bars and restaurants, and also is conveniently placed for public transport links.



Find out more...

For more information or to arrange a viewing please contact Clyde Property Shawlands
226 Kilmarnock Road, Shawlands G43 1TY

T: 0141 571 3777

F: 0141 571 0071

E: shawlands@clydeproperty.co.uk

W: www.clydeproperty.co.uk



Whilst this brochure has been prepared with care, it is not a report on the condition of the property. Its terms are not warranted and do not constitute an offer to sell. All area and room measurements are approximate only. Floorplans are for illustration only and may not be to scale. All measurements are taken from longest and widest points.

Approximate gross internal area 419 sq ft - 39 sq m

At Clyde Property we're available 7 days a week until 8pm every day

