



To view the HD video [click here](#)

Flat G/R, 17 Ruskin Terrace **Hillhead**

 **clyde**  
PROPERTY



## Flat G/R, 17 Ruskin Terrace, Hillhead G12 8DY



Positioned within an impressive sandstone terrace which sits parallel with Great Western Road, this charming, two bedroom ground floor conversion.

The property is accessed through a secure door which leads into a grand common reception hallway and stairwell. Internally the property is well-presented and has been updated over the years to provide comfortable living space. In brief, the accommodation extends to; impressive front



facing sitting room which is open plan to a modern fitted kitchen with plenty of wall and base mounted storage units, a well-appointed bathroom with contemporary white three piece suite and shower above bath plus two rear facing double bedrooms. Off-street parking is available to the rear, which is shared with the residents.



**EER rating :** Band D

**Property reference :** HM03116

**Connect & Share.** View the video in HD, simply download our APP, hover over the cover and see it come to life.

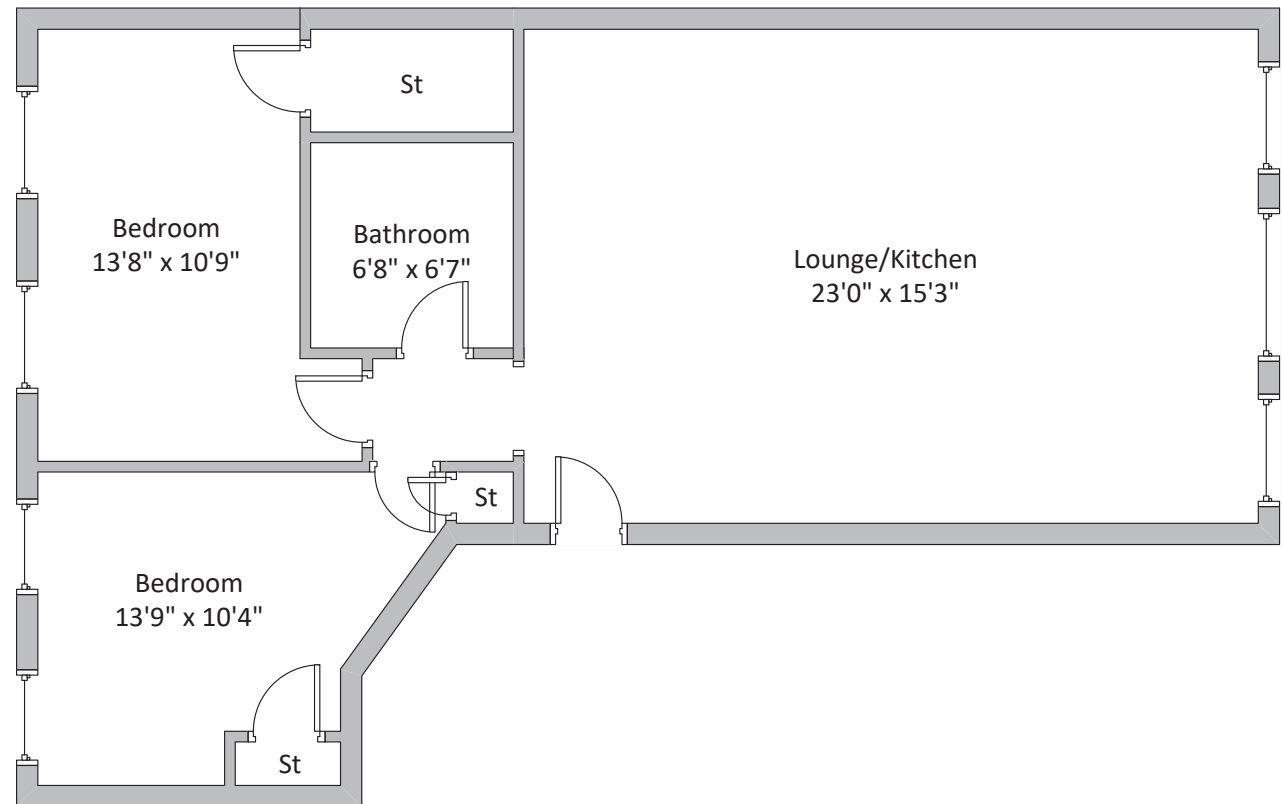






## Property location

Ruskin Terrace has long been regarded as one of Hillhead's most popular addresses, located within the Hillhead Primary school catchment area. Formerly an iconic terrace of townhouses, the address has largely been split and converted into traditional apartments. In terms of position, Ruskin Terrace is very handy for amenities along Great Western road, within the West End and is also well-placed for gaining access to Glasgow city centre thanks to the presence of the very nearby Kelvinbridge underground station.



## Find out more...

For more information or to arrange a viewing please contact Clyde Property West End  
145 Byres Road, Glasgow G12 8TT

**T: 0141 576 1777**

**F: 0141 576 0123**

**E: westend@clydeproperty.co.uk**

**W: www.clydeproperty.co.uk**



Whilst this brochure has been prepared with care, it is not a report on the condition of the property. Its terms are not warranted and do not constitute an offer to sell. All area and room measurements are approximate only. Floorplans are for illustration only and may not be to scale. All measurements are taken from longest and widest points.

Approximate gross internal area 721.18 sq ft - 67 sq m

**At Clyde Property we're available 7 days a week until 8pm every day**

