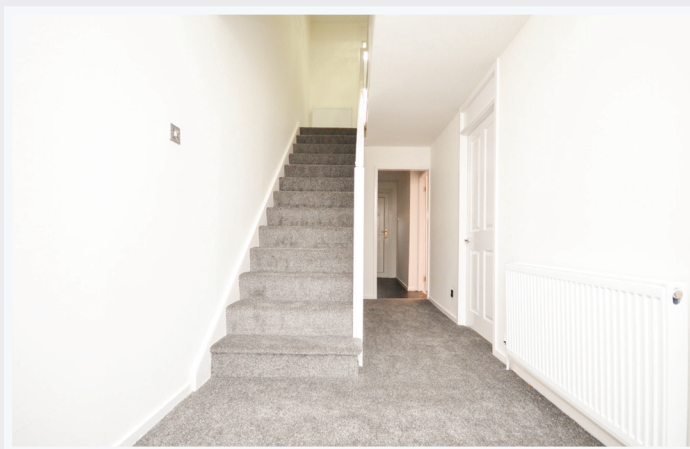




To view the HD video [click here](#)

22 Staffa **East Kilbride**

22 Staffa, East Kilbride G74 2EA



A truly wonderful three bedroom mid-terrace villa located in the desirable St. Leonards area of East Kilbride. On arrival at the property you are welcomed by parking facilities and garden grounds to the front and rear. The grounds have been laid to lawn and the rear grounds are enclosed by a timber fence making it child friendly. Internally the property has undergone an extensive refurbishment and is presented to the market in "turn the key" condition. the accommodation comprises: reception hallway, front facing lounge, fully fitted kitchen with integrated appliances, utility room, three bedrooms and a three piece bathroom. The home is heated via gas central heating and double glazed windows are installed throughout.

EER rating : Band C

Property reference : TW5468

Connect & Share. View the video in HD, simply download our APP, hover over the cover and see it come to life.







Property location

Perfectly located for gaining fast access to major road networks that lead quickly to motorway networks, this spacious family home could not be better-placed for those commuting through Western-Central Scotland for work. East Kilbride is home to the fantastic Centre West shopping centre complete with numerous high street and fashion outlets, restaurants, ice rink and multiplex cinema, all within a short distance of the subject property. The town also boasts a selection of woodland and loch side parks, parkland golf courses, Kingsgate Retail Park and the highly popular PlaySport facility.

Find out more...

For more information or to arrange a viewing please contact Clyde Property Bothwell

47 Main Street, Bothwell G71 8ER

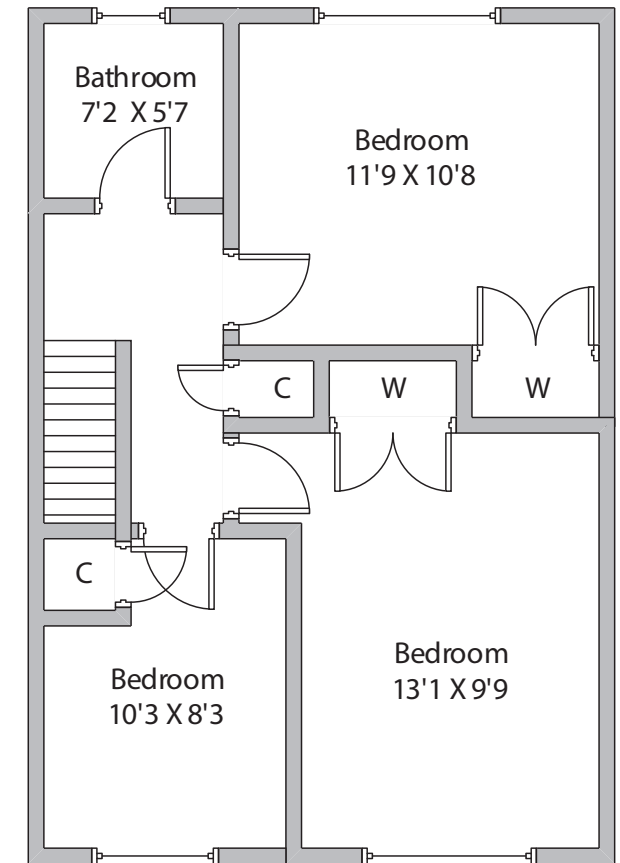
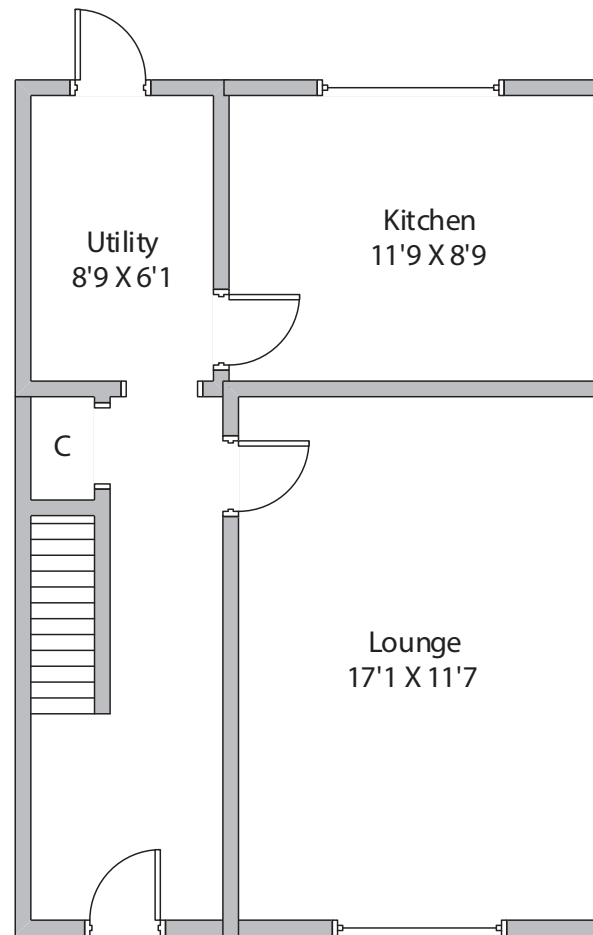
T: 01698 477111

E: bothwell@clydeproperty.co.uk

W: www.clydeproperty.co.uk



Whilst this brochure has been prepared with care, it is not a report on the condition of the property. Its terms are not warranted and do not constitute an offer to sell. All area and room measurements are approximate only. Floorplans are for illustration only and may not be to scale. All measurements are taken from longest and widest points.



Approximate gross internal area 957.98 sq ft - 89 sq m

At Clyde Property we're available 7 days a week until 8pm every day

