



35 Haselour Road, Birmingham, West Midlands, B37 6EG

3 Bed Maisonette

£625 PCM

📍 Receptions 1

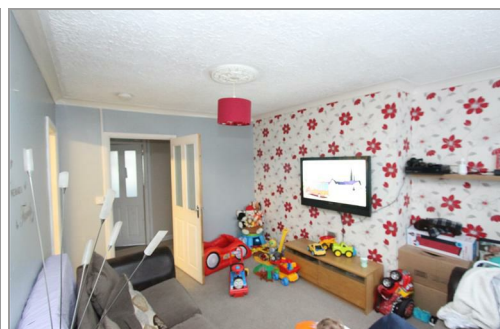
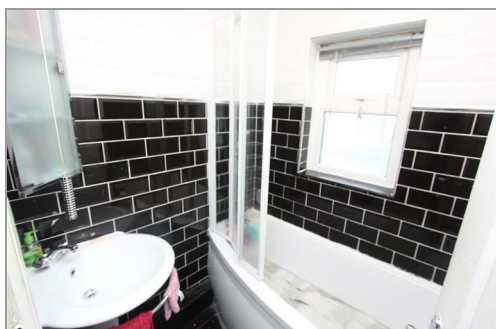
🛏 Bedrooms 3

🚿 Bathrooms 1



- **WE DO NOT CHARGE APPLICATION FEES TO TENANTS**
- **GREAT SIZE THREE BEDROOM 1ST FLOOR MAISONETTE**
- SHARED DRIVEWAY WITH PRIVATE REAR GARDEN AND OUTBUILDING
- LOUNGE WITH BALCONY OFF
- FITTED KITCHEN

- THREE BEDROOMS
- BATHROOM WITH SHOWER OVER BATH AND SEPARATE W.C.
- GAS CENTRAL HEATING
- EPC RATING C
- WORKING PROFESSIONALS ONLY, NONE SMOKERS, NO PETS



35 Haselour Road, Birmingham, West Midlands, B37 6EG

****WE DO NOT CHARGE TENANT REFERENCING OR APPLICATION FEES****

*****WELL PRESENTED GOOD SIZED THREE BEDROOM FIRST FLOOR MAISONETTE*****

Lounge with Balcony off

Fitted Kitchen

Bathroom and separate WC

Three good sized bedrooms

Double Glazing

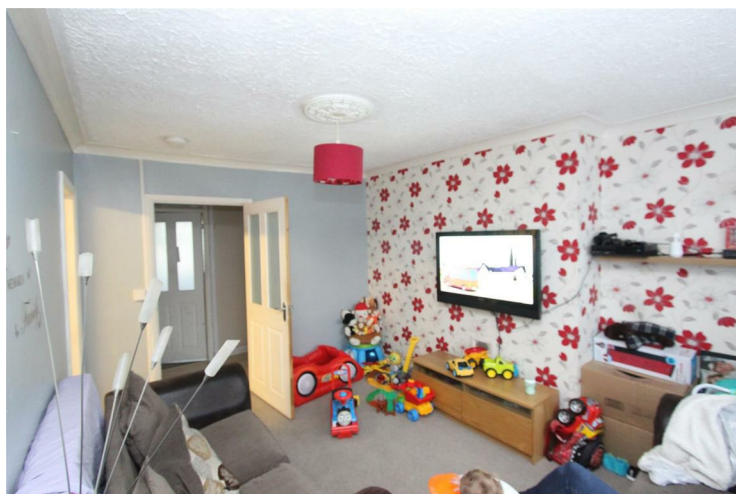
Gas Central Heating

Shared driveway and COMES WITH OWN REAR GARDEN AND OUTBUILDING

Available for long term let from end of January

Lounge

Lounge



Kitchen



Bedroom 1



Bedroom 2



Bedroom 3



Bathroom

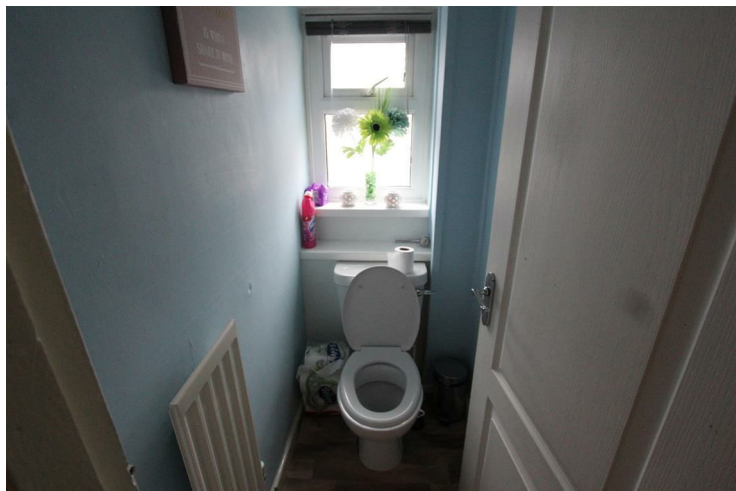


35 Haselour Road, Birmingham, West Midlands, B37 6EG

Garden

Garden

W.C.



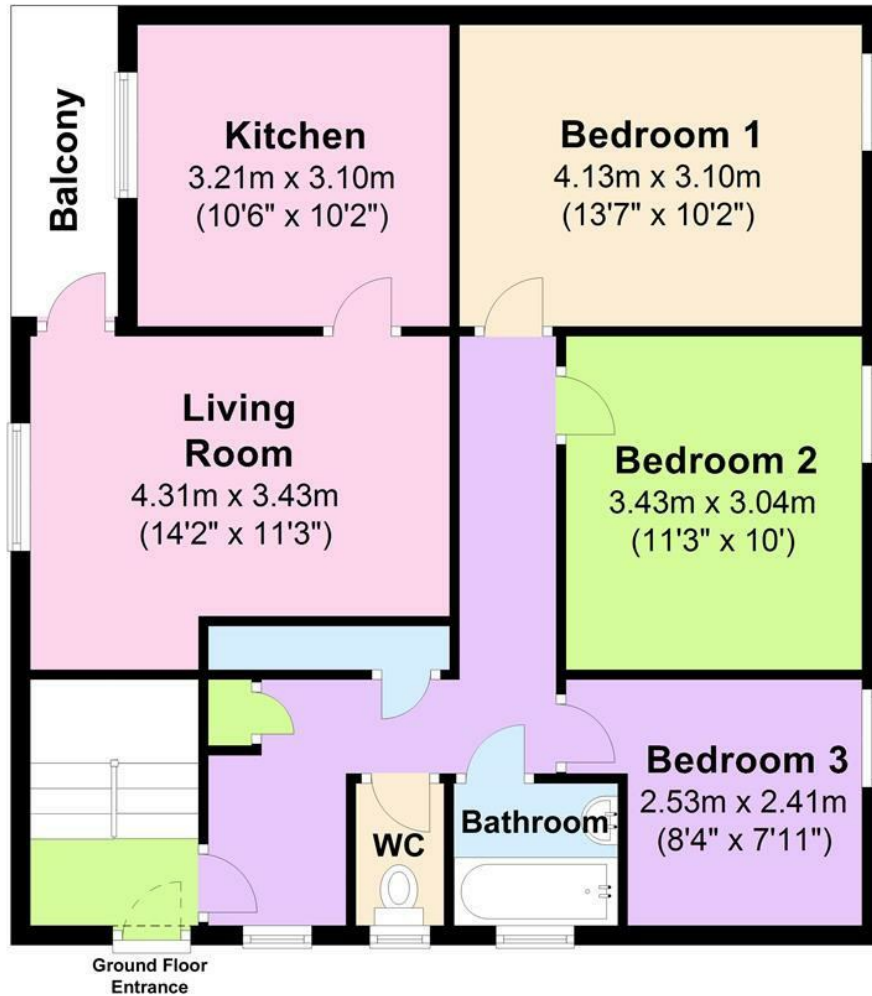
Front View



Haselour Road

First Floor

Approx. 75.5 sq. metres (812.2 sq. feet)



Total area: approx. 75.5 sq. metres (812.2 sq. feet)



PROPERTY MISDESCRIPTIONS ACT: Ferndown Estates have not tested any equipment, fixtures, fittings or services mentioned and do not by these Particulars or otherwise verify or warrant that they are in working order. All measurements listed are given as an approximate guide and must be carefully checked by and verified by any Prospective Purchaser. These particulars form no part of any sale contract. Any Prospective Purchaser should obtain verification of all legal and factual matters and information from their Solicitor, Licensed Conveyancer or Surveyors as appropriate.

