

13 King Street, Bedworth, Warwickshire, CV12 8HS,
England
Tel: 02476 312379
Fax:
Email: bedworth@hawkins-online.co.uk

hawkins
Sales and Lettings



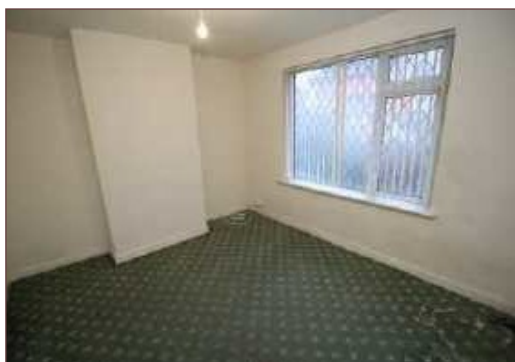
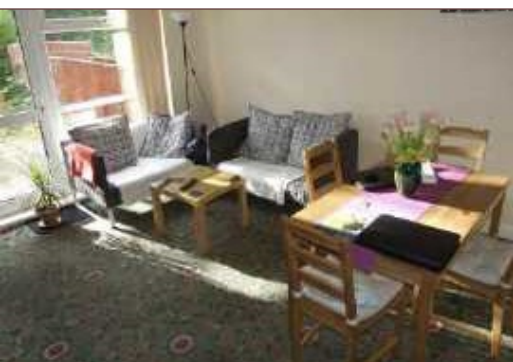
149 Wyley Road, Coventry, CV6 1NX

£700 Per calendar month

PLEASE BE QUICK Hawkins are pleased to offer this three bedroom semi detached property in Radford. Offered for let unfurnished with two reception rooms* Kitchen* Bathroom* First floor to three bedrooms* Hard standing for parking*
Available Immediately

Application fee £130 for the first applicant, £100 for additional applicants
Tenancy fee £195. Other fees may apply.

NO SMOKERS, NO PETS, NO DSS



149 Wyley Road, Coventry, CV6 1NX

Entrance Hall

Stairs to first floor, under stairs storage cupboard

Reception One 11'7" x 10'2" (3.53m x 3.10m)

uPVC double glazed window, central heating radiators.

Reception Two 13'4" x 11'9" (4.06m x 3.58m)

uPVC double glazed patio door and windows, central heating radiator, door to kitchen.

Kitchen 15'6" x 10'9" (4.72m x 3.28m)

Range of base and drawer units with work surface above, matching wall mounted storage cupboards, built in cooker, hob and cooker hood, stainless steel sink, tiled floor, boiler, uPVC double glazed door to rear garden, central heating radiator, uPVC double glazed windows.

Bathroom 5'7" x 5'4" (1.70m x 1.63m)

Panelled bath with shower above, low level WC, hand wash basin.

First Floor Landing

Access to roof space.

Bedroom 1 13'5" x 9'9" (4.09m x 2.97m)

uPVC double glazed window, central heating radiator, storage cupboard

Bedroom 2 14' x 11' (4.27m x 3.35m)

uPVC double glazed window, central heating radiator

Bedroom 3 10'11" x 6'6" (3.33m x 1.98m)

uPVC double glazed window, central heating radiator

Outside

Front garden with hard standing for vehicle. Rear garden.

Directions



| Energy Efficiency Rating | | Environmental Impact (CO ₂) Rating | |
|--------------------------|-----------|--|-----------|
| Current | Potential | Current | Potential |
| | | | |
| 60 | 85 | 56 | 85 |
| England & Wales | | England & Wales | |