

25 Meadow Drive, Sulis Meadows, Bath. BA2 2BU



At a glance...

- Stylish semi-detached home
- 2 double bedrooms
- Highly desirable Sulis Meadows
- Garage and parking space
- Cul-de-sac location
- Level garden
- Replacement double glazing and gas central heating
- No onward chain

Price £265,000



The property This lovely, modern semi nestles in the heart of Sulis Meadows, an extremely sought-after place to live close to the Park and Ride in South Bath.

It is available with no-onward chain and enjoys two double bedrooms and the distinct advantage of a garage and parking space.

The property begins with the main entrance door which opens to the hallway. From here, is the most useful downstairs cloakroom with hand basin and WC.

The kitchen comprises a selection of off-white units with gas hob, electric oven, double glazing and plumbing for washing machine.



The sitting/dining room is generous in size and able to accommodate a dining table and settees. It features refitted double glazed patio doors to the garden and easy-to-keep, laminate flooring.

Upstairs, there are two smart, double bedrooms (to front and rear respectively) each fitted with storage areas and double glazing. Between the two is the family bathroom which comprises a panelled bath, hand-basin and WC with the bonus of a window to the side.

Outside, the front garden has a small lawned area with a path to the front door and another side access and planted area leading to the rear garden.

To the rear, the garden is level with space for seating on the patio, lawn and borders and with a boundary wall and fencing and independent gate to the side.

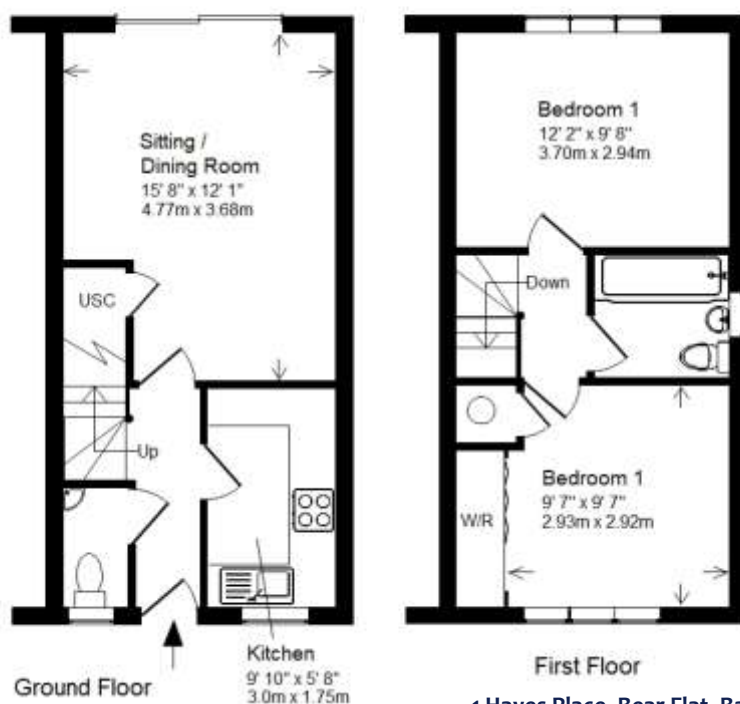
The single garage is situated to the left of the house (as you look at it) and is the middle of a rank of three with a parking space in front.

Location Meadow Drive is situated as part of the hugely sought-after Sulis Meadows development, which has excellent access by car or bus to the City of Bath. The Odd Down Park and Ride is situated in easy distance as is a Doctor's Surgery and St Gregory's Secondary School and Sixth Form. Access to nearby towns such as Radstock, Midsomer Norton, Peasedown and Wells are made easier by the location of the property and there are country walks to South Stoke and Combe Hay which begin near the house.

How to get there From our office, proceed up the Wellsway to the very end where you will reach the Odd Down Park and Ride roundabout. Here, turn left and second right onto Burnt House Road, follow this round taking the second left to Meadow Drive where the property can be found towards the end.



"DoubleClick Insert Picture"



Ground Floor
 Approx. Gross Internal Floor Area: 630 Sq. Ft. / 59 Sq. M
 Includes Conservatories and attached Garages
 For indicative purposes only.
 Copyright Jemesis Ltd 2018 0330

1 Hayes Place, Bear Flat, Bath BA2 4QW
 Tel: (01225) 422 224
 E-mail: homes@mark-naylor.com



Measurements - All dimensions are approximate. **Fixtures, Fittings & Appliances** - The mention of any appliances, fixtures, fittings &/or appliances does not imply they are in full efficient working order. **Internal Photographs** - Items shown in photographs are not included unless specifically mentioned within the details. They may be available by separate negotiation. **Drawings/Sketches/Floor Plans** - For general guidance only and is not to scale. **General Disclaimer** - Every care has been taken with the preparation of these Sales Particulars but they are for general guidance only and complete accuracy cannot be guaranteed. If there is any point, which is of particular importance professional verification should be sought. These Sales Particulars do not constitute a contract or part of a contract.