



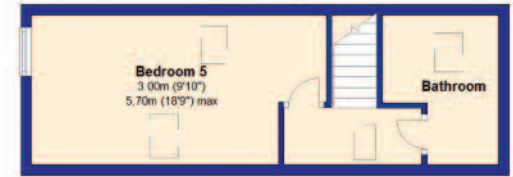
**LOW WALWORTH HALL
DARLINGTON, CO DURHAM, DL2 2NA**

**NICK & GORDON
CARVER
RESIDENTIAL**

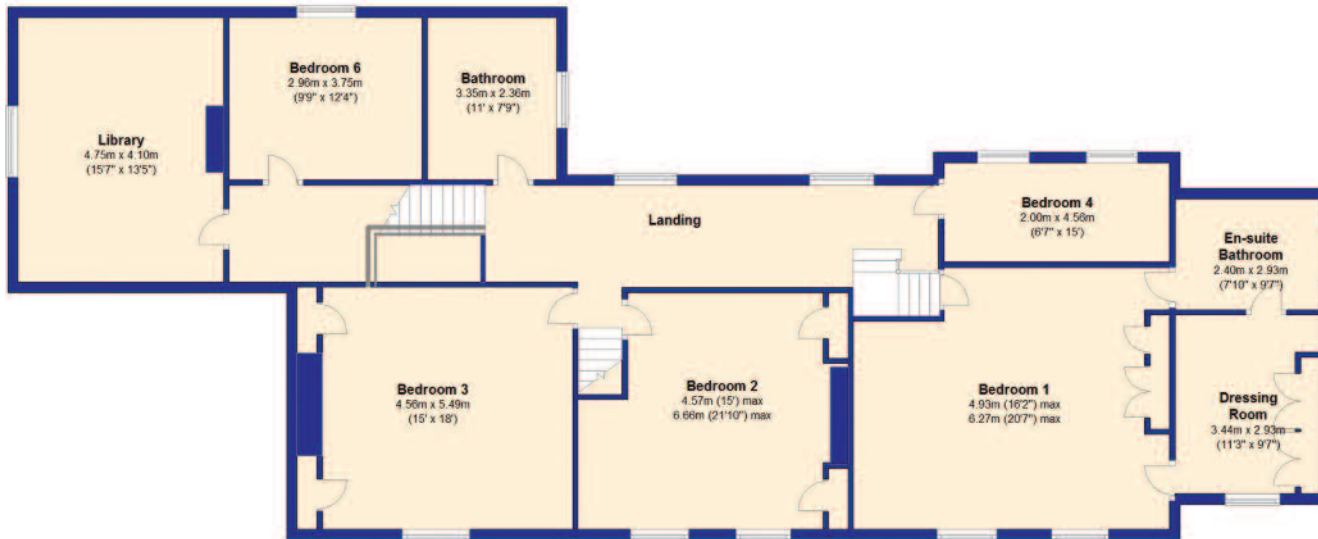
Ground Floor



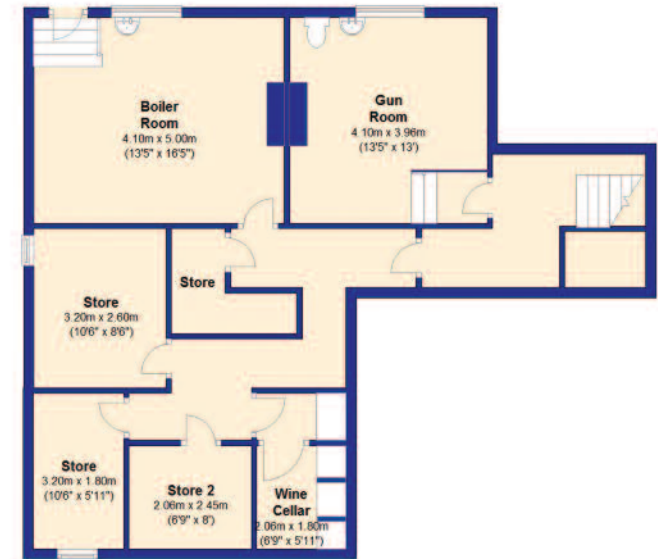
Second Floor



First Floor



Cellar



LOW WALWORTH HALL DARLINGTON, CO DURHAM, DL2 2NA

An exceptional Grade II Listed building of considerable historical interest, believed to date back to the early 1500's and was understood to have been occupied in the early part of the 16th century, when it formed the Dower House to nearby Walworth Castle. The Hall overlooks beautiful south facing formal grounds and provides six double bedrooms and five reception rooms. There is a block of stone built buildings to the rear of the hall, which incorporate garages, stabling and a first floor flat (in need of completion). There is a tennis court, indoor heated swimming pool, a large Victorian greenhouse, formal and walled gardens with ornamental ponds and adjoining grass paddocks, in all extending to around 11.46 acres.

Low Walworth Hall is approached along a half mile driveway through farmland with a set of remote control wooden gates opening to provide access to the stunning grounds of the Hall, with a gravelled driveway sweeping to the front of the building.

The gardens, until recently, have been open to the public. The old walled garden features high brick walls which support espalier fruit trees with carefully shaped lawns interspersed with rose beds and shrubs. Beyond the old walled garden is the productive kitchen garden with large greenhouse and potting shed. There are two large ponds, a wildlife lake and a wide variety of trees with further formal lawned areas. The detached timber clad pool house incorporates the indoor heated swimming pool, Jacuzzi and sauna.



The house provides many original features with the principal reception rooms and first floor bedrooms facing south. There is a large panelled dining room together with an attractive sitting room with open fireplace. The larger drawing room features wide exposed timber floorboards and a wood burning stove. There is a study with a small open fireplace and a window overlooking the courtyard. The library, which faces west, has fitted book shelving to two walls. The kitchen is completely refitted, within recent years, with a contemporary style range of units with integrated appliances. The kitchen is supported by a large utility room and pantry. The staircase from the entrance hall leads down to the magnificent range of cellars, which include a gun room, laundry room and other storage rooms and wine bins. There are five double bedrooms to the first floor, with the master bedroom benefiting from an en-suite dressing room and bathroom. The remaining bedrooms are supported by a large family bathroom. The second floor provides a double bedroom and a second bathroom.

PRICE ON APPLICATION

14 Duke Street, Darlington, County Durham DL3 7AA

Telephone 01325 357807 Fax 01325 383537

E-mail sales@carvergroup.co.uk Website www.carvergroup.co.uk







These particulars do not constitute any part of an offer of contract.
None of the statements contained in these particulars are to be relied on as statements or representations of fact and any intending purchaser must satisfy himself by inspection or otherwise to the correctness of each of the statements contained in these particulars.
The vendor does not make or give, and neither Nick & Gordon Carver Residential or Commercial, Nick & Gordon Carver nor any person in their employment has any authority to make or give any representation or warranty whatever in relation to this property.

SERVICES

Mains electricity, Mains water, Private drainage, Oil fired central heating to radiators

LOCAL AMENITIES

Hunting with the Zetland, Bedale, West of Yore and South Durham.

Private education in Barnard Castle and Yarm.

Shopping: in the nearby market towns of Darlington, Barnard Castle and Richmond.

DIRECTIONS

Travelling north on the A1(M) take the B6275 to Piercebridge, just after Scotch Corner. At Piercebridge continue north on the B6275 and, after 2 miles, at the first cross roads turn

right onto the B6279 towards Darlington. After approximately 2 miles and some 50 yards short of a row of farm cottages on the right hand side of the road, turn left up a narrow lane. The Hall lies approximately ½ a mile along this driveway.

From Darlington leave on the B6279 towards Staindrop, pass under the motorway and after about 1½ miles and 50 yards passed a row of farm cottages on the left hand side of the road, turn immediately right up a narrow driveway. The Hall lies approximately ½ a miles along the driveway.

Viewings

For further information and viewings please contact our Darlington office on 01325 357807.



