





- No Upper Chain
- River Views
- Allocated Parking
- Two Bedrooms
- Lift Access
- Popular Development





**** AVAILABLE WITH NO ONWARD CHAIN OR FOR INVESTMENT ****

Currently tenanted paying £650 pcm or can be available with no onward chain. This two bedroom apartment with river views. Located within this popular development The Staithes viewings are recommended on this property. The property comes with no upper chain and briefly comprises; stairs and lift access the third floor, hallway, open plan lounge kitchen and dining area with Juliet balcony and views over the Tyne. Two bedrooms master with balcony and bathroom. The property benefits from electric heating and double glazing. Externally there are communal areas and allocated parking. Viewings come highly recommended.

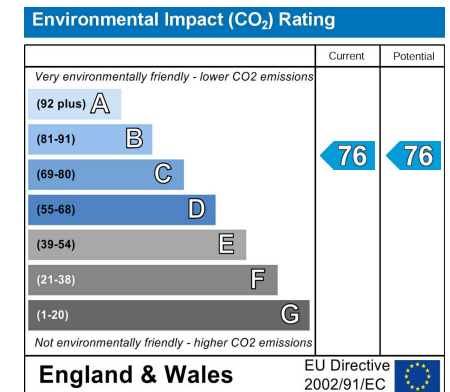
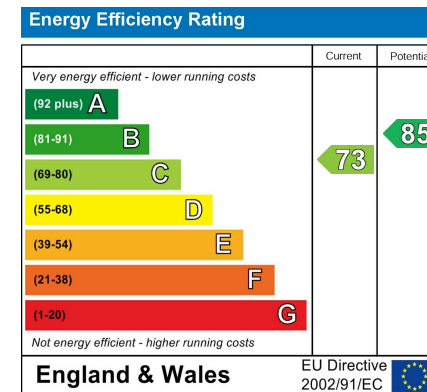
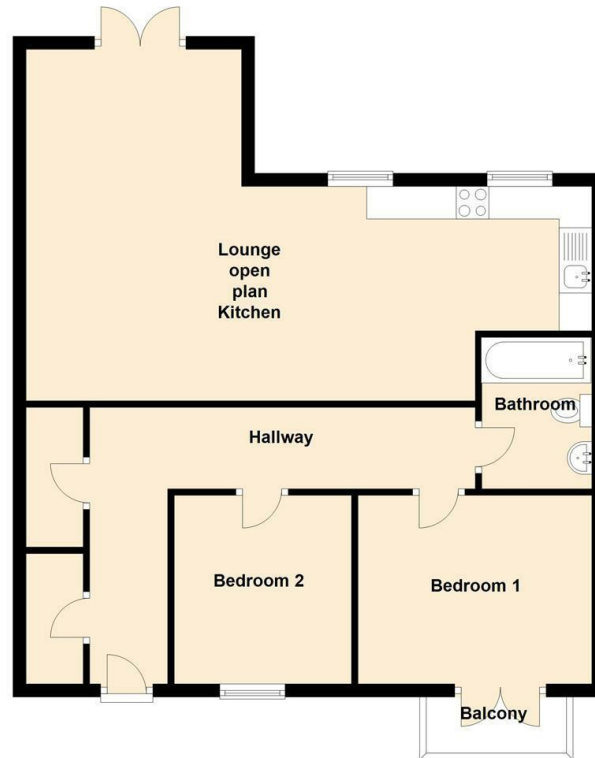


Lounge/Kitchen 28'5" x 10'5" (8.67 x 3.20)

Master Bedroom 11'8" x 9'4" (3.56 x 2.86)

Bedroom Two 6'8" x 8'9" (2.04 x 2.69)

Ground Floor



The difference between house and home

You may download, store and use the material for your own personal use and research. You may not republish, retransmit, redistribute or otherwise make the material available to any party or make the same available on any website, online service or bulletin board of your own or of any other party or make the same available in hard copy or in any other media without the website owner's express prior written consent. The website owner's copyright must remain on all reproductions of material taken from this website.



www.janforsterstates.com

Gosforth 0191 236 2070
Newcastle 0191 284 4050
Forest Hall 0191 605 3134
High Heaton 0191 270 1122
Low Fell 0191 487 0800
Tynemouth 0191 257 2000
Whitley Bay 0191 251 3000
Property Management Centre 0191 236 2680

