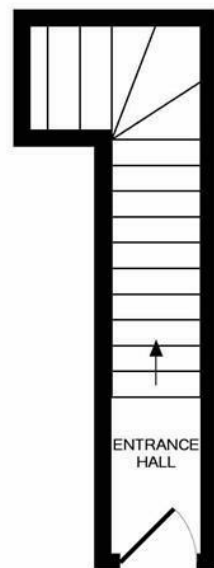




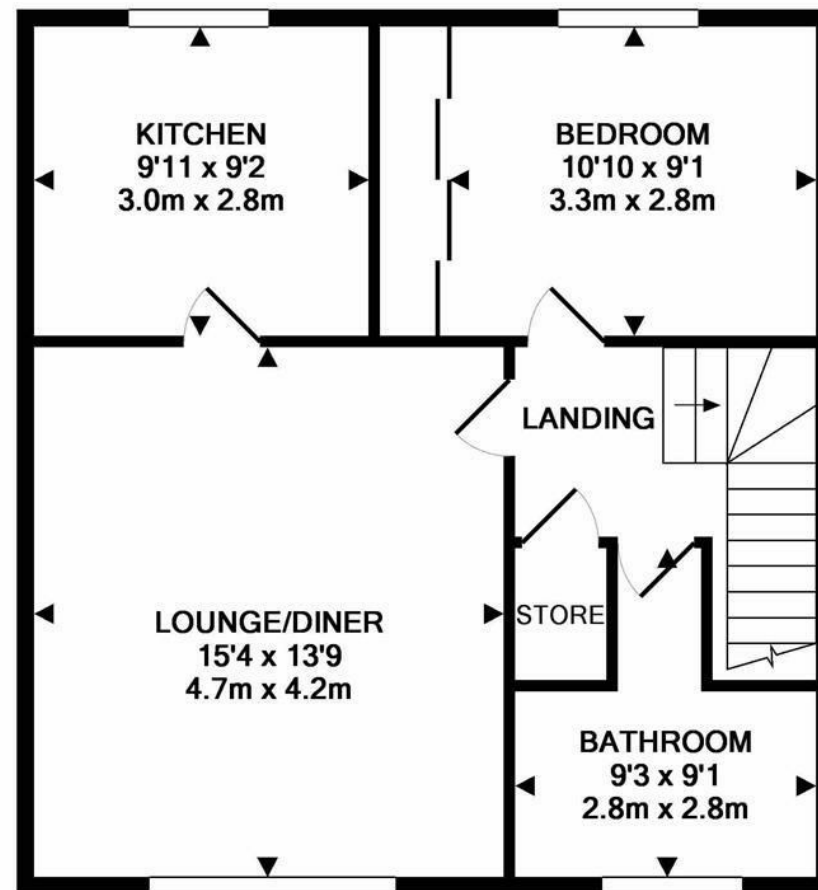
Priced to reflect cosmetic updating. This great first floor apartment is ideally situated on Rows Mews, within the St. Peters Basin Development. St. Peter's Basin, originally constructed in 1989, and on the banks of the Tyne, offers a wonderful quality of life close to the centre of Newcastle. The property is located a short walk from the central marina and offers easy access to pleasant riverside walks to Newcastle's Quayside.

The property, accessed via its own front door briefly comprises: private entrance hall with stairs to the first floor landing with store cupboard; 15ft lounge/diner; kitchen with river views; bedroom one with fitted storage and bathroom. Externally the property benefits from allocated parking space with visitors parking also provided.

Modern First Floor Apartment | 614 Sq ft (57m²) | One Double Bedroom | 15ft Lounge/Diner | Separate Kitchen | Bathroom | Priced to Reflect Cosmetic Updating | Great Location | Allocated Parking | DG | EPC Rating: TBC



GROUND FLOOR
APPROX. FLOOR
AREA 54 SQ.FT.
(5.1 SQ.M.)



1ST FLOOR
APPROX. FLOOR
AREA 559 SQ.FT.
(52.0 SQ.M.)

TOTAL APPROX. FLOOR AREA 614 SQ.FT. (57.0 SQ.M.)

Whilst every attempt has been made to ensure the accuracy of the floor plan contained here, measurements of doors, windows, rooms and any other items are approximate and no responsibility is taken for any error, omission, or mis-statement. This plan is for illustrative purposes only and should be used as such by any prospective purchaser. The services, systems and appliances shown have not been tested and no guarantee as to their operability or efficiency can be given
Made with Metropix ©2018

Offers Over £95,000

Misrepresentation Act 1967. These particulars and the descriptions and measurements herein do not constitute representation and whilst every effort has been made to ensure accuracy, this cannot be guaranteed.

