



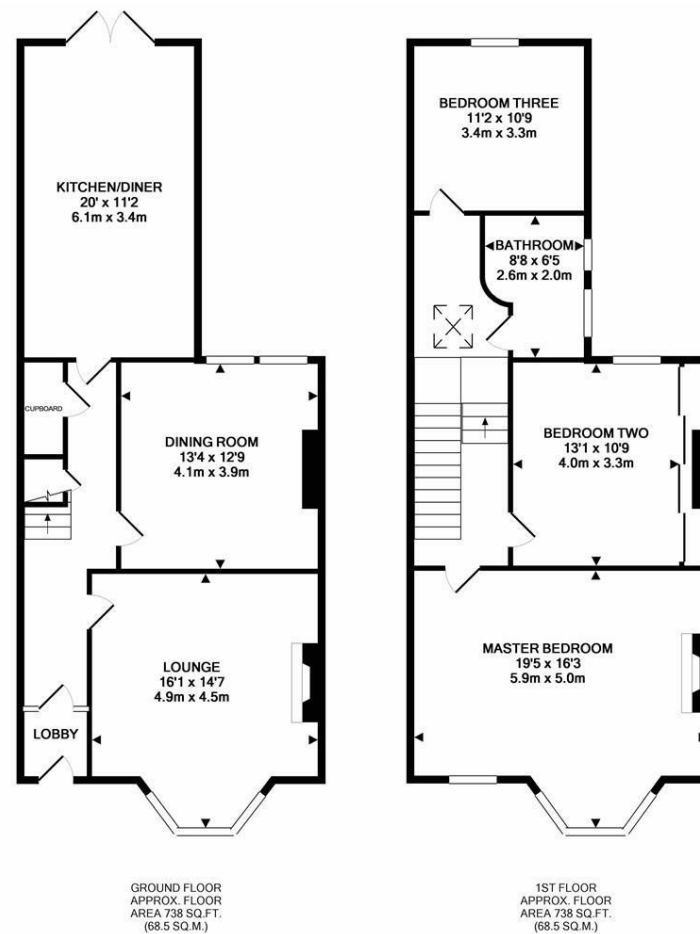


With open aspect views, a delightful early Edwardian terrace with generous enclosed courtyard & garage! Ideally located, Highbury, one of Newcastle's most popular residential terraces, offers fabulous open aspect views to the west and is perfectly placed close to outstanding local schools, West Jesmond Metro Station, the shops, cafés & restaurants of Jesmond, and indeed within walking distance of Newcastle City Centre itself.

With almost 1,500 square feet, the accommodation accessed via a stone portico comprises entrance lobby through to entrance hall; lounge with tall ceilings, west facing, walk-in bay and period fireplace; dining room and an impressive 20ft kitchen/diner with Aga. To the first floor, an impressive full width master bedroom with period fireplace and delightful open aspect views; bedroom two with fitted robes; bedroom three another comfortable double; stylish family bathroom/WC with Travertine marble tiling. Externally, a town garden to the front with railings and planted areas, whilst to the rear a generous courtyard with sandstone paving and walled boundaries. There is also a detached garage providing off street parking. A great family home in a superb location!

Edwardian Terrace | 1,476 Sq ft (137.1m<sup>2</sup>) | Three Double Bedrooms | Lounge | Dining Room | 20ft Kitchen/Diner | Full Width Master Bedroom | Bathroom/WC | Detached Garage | Generous Rear Courtyard | Great Location | Open Aspect Views | No Onward Chain | EPC Rating: D

**Offers Over £475,000**



Whilst every attempt has been made to ensure the accuracy of the floor plan contained here, measurements of doors, windows, rooms and any other items are approximate and no responsibility is taken for any error, omission, or mis-statement. This plan is for illustrative purposes only and should be used as such by any prospective purchaser. The services, systems and appliances shown have not been tested and no guarantee as to their operability or efficiency can be given.  
Made with Metropix ©2018

**IMPORTANT NOTE:** These particulars and the descriptions and measurements herein do not constitute representation and whilst every effort has been made to ensure accuracy, this cannot be guaranteed.

