



Total area: approx. 158.2 sq. metres (1703.3 sq. feet)

- 4
- 2
- 3
- Garage and driveway
- Front and rear gardens

Lounge Area
17'10" x 11'6"

Dining Area
9'7" x 15'6"

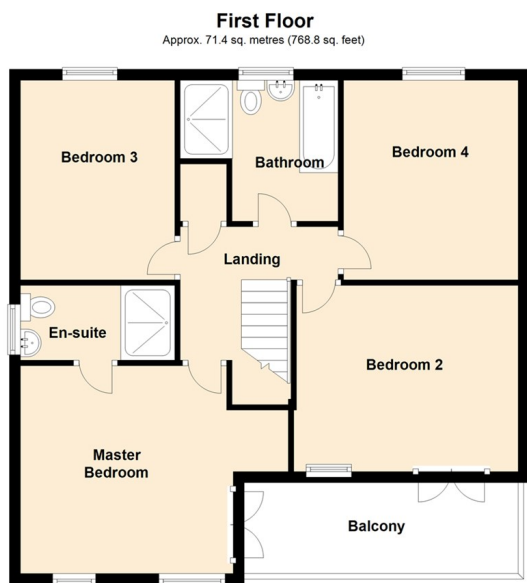
Kitchen Area
12'2" x 10'11"

Master Bedroom
14'9" x 13'2"

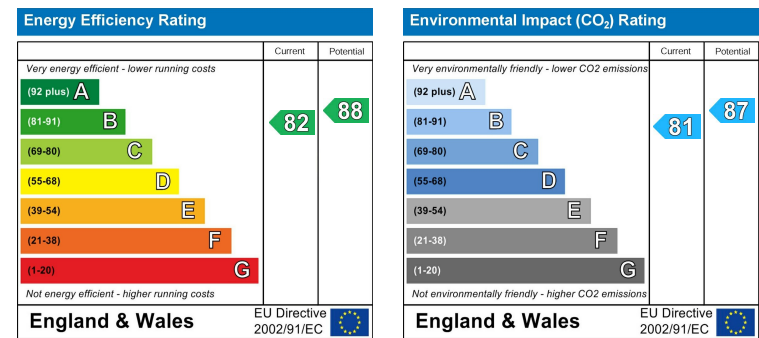
Bedroom Two
12'9" x 12'4"

Bedroom Three
8'10" x 11'3"

Bedroom Four
10'2" x 8'3"



You may download, store and use the material for your own personal use and research. You may not republish, retransmit, redistribute or otherwise make the material available to any party or make the same available on any website, online service or bulletin board of your own or of any other party or make the same available in hard copy or in any other media without the website owner's express prior written consent. The website owner's copyright must remain on all reproductions of material taken from this website.



Gosforth 29 Princes Road 0191 236 2070	Newcastle 201 High Street 0191 284 4050	Forest Hall 26a Station Road North 0191 605 3134
High Heaton 159 Benton Road 0191 270 1122	Low Fell 478 Durham Road 0191 487 0800	Tynemouth 10 Front Street 0191 257 2000
	Whitley Bay 70 Park View 0191 251 3000	

www.janforsterestates.com

Jan Forster
estates



Hethpool Court, Greenside, Newcastle Upon Tyne

Price £330,000



Gosforth	0191 236 2070
Newcastle	0191 284 4050
Forest Hall	0191 605 3134
High Heaton	0191 270 1122
Low Fell	0191 487 0800
Tynemouth	0191 257 2000
Whitley Bay	0191 251 3000

www.janforsterestates.com

Kitchen



- Four Bedroom Detached
- Garage & Drive
- Downstairs WC
- Substantial Balcony
- Separate Utility
- No Onward Chain
- Master En-Suite
- Reconfigured Open Plan Layout
- Highly Regarded Area
- Close To Local Amenities

Bedroom Two



What the vendor says..... "We originally chose to buy on Greenside as it consisted of all detached houses and its location was ideal with great access to schools, shops and commuter road and metro links. We have loved living in Hethpool court with its quiet cul-de-sac setting and the added bonus of helpful and professional neighbours that we are still friends with to this day. Since owning the property we have improved it significantly by opening up the majority of downstairs to give a bright open plan feel and floored the whole area with Premium Quickstep flooring. We have thoroughly loved living here and hope you will do too."

Located on the ever desirable Greenside Development is this reconfigured four bedroom detached home offered with no onward chain. Greenside is made up entirely of detached executive properties all with generous plots and within easy access to the A1 motorway, schools and the retail park in Kingston Park. Internally the property has been reconfigured downstairs to provide a stunning wrap around open plan living/dining/kitchen area, separate utility, downstairs WC and entrance hall. To the first floor there are four double bedrooms with two benefiting from balcony access and master with en-suite as well as a family four piece bathroom. Externally there is a driveway leading to an integral garage and gardens to both the front and rear. Overall a substantial family home.

Lounge Area



Master Bedroom



Bathroom



Rear Garden

