



**Compton Drive, Lower Parkstone,
Poole, Dorset, BH14 8PW**

HEARNES

WHERE SERVICE COUNTS



Compton Drive, Lower Parkstone, Poole, Dorset, BH14 8PW Freehold Price Offers Over £800,000

A beautifully presented four bedroom detached home set in this prestigious tree lined road just a few hundred yards from Parkstone Golf Club. The property was completed in 2015, having been constructed for the builder's own occupation, therefore finished to a high standard throughout and offered with the remainder of the 10 year builders warranty.

The contemporary accommodation includes a superb kitchen/dining/family room which forms the hub of the house and has full width patio doors leading to the south facing rear garden. The kitchen is fitted with a full range of appliances and there is a separate utility room with space for washing machine and tumble drier.

Both the en suite and the main bathroom are fitted in stylish white suites with extensive complimentary tiling in natural tones. The three larger bedrooms all have fitted wardrobes and bedroom four has a vaulted ceiling and feature windows (this would make an ideal walk-in dressing room if so desired)

The entrance level has a spacious and welcoming reception hall with a personal door to the garage making it ideal for storage, and there is a gym/games room which could also be a home office. The main lounge on the upper ground floor is a bright, tranquil room with an elevated outlook over the tree-lined road.

This lovely home benefits from gas central heating, double width driveway, double glazing, fitted flooring and blinds throughout and a lovely southerly garden with artificial lawn, large composite deck and timber summer house. It is absolutely immaculate throughout and tastefully decorated in natural tones complimenting the flooring.

The property is set amidst other substantial detached homes of similar size and stature in the prime residential established area.

Poole Town Centre 2.3 miles. Bournemouth Town Centre 3.5 miles
Nearest beach 1.7 miles. Canford Cliffs Village 1.3 miles. Parkstone Golf Club 300 yards. Ashley Cross 1 mile. Lilliput shops 1 mile. London 110 miles. Southampton 35 miles. Portsmouth 55 miles.

Council Tax Band F EPC Rating B



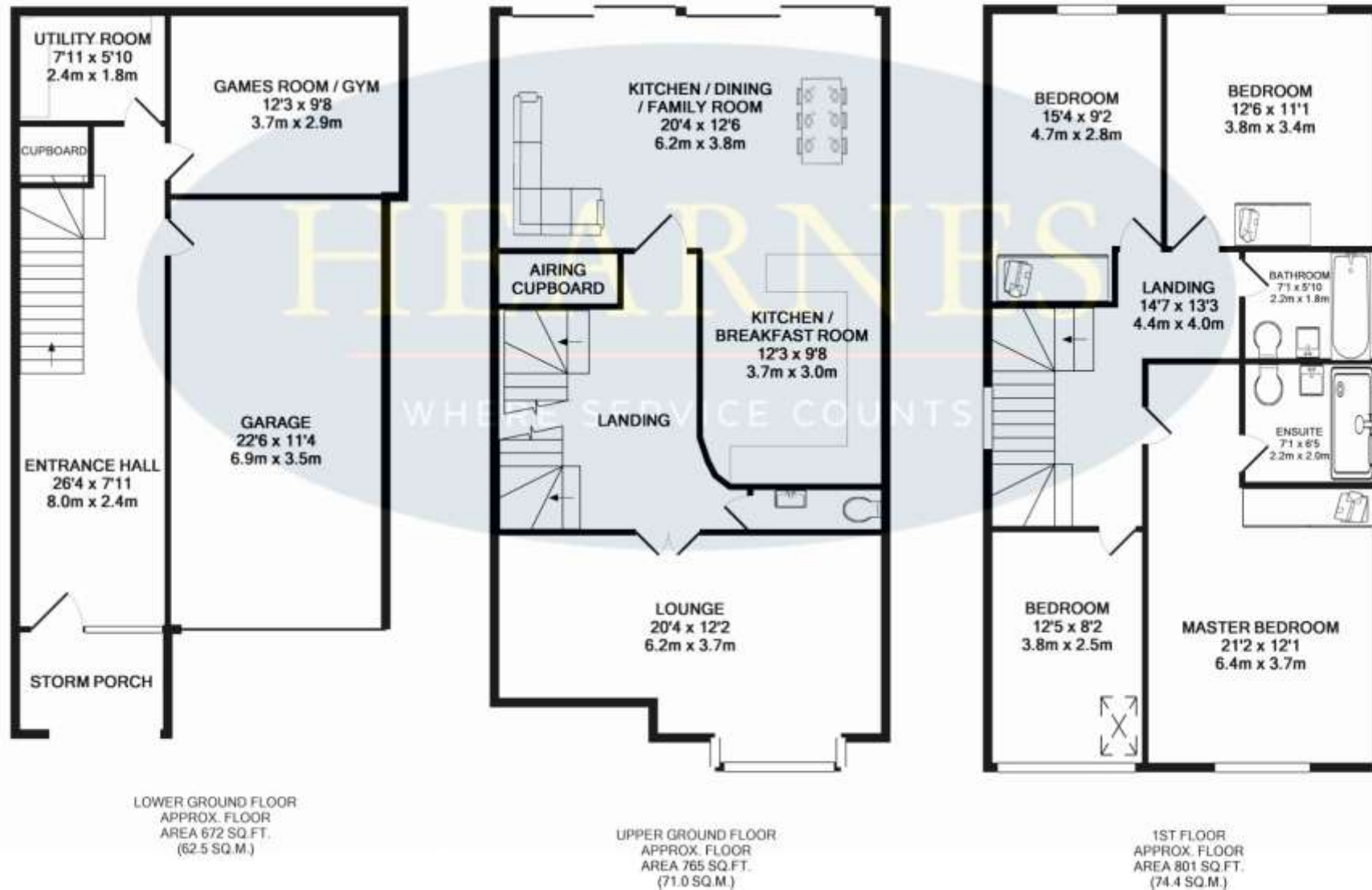




TOTAL APPROX. FLOOR AREA 2238 SQ.FT. (207.9 SQ.M.)



Whilst every attempt have been made to ensure the accuracy of the floor plan contained here, measurements of doors, windows, rooms and any other items are approximate and no responsibility is taken for any error, omission, or mis-statement. This plan is for illustrative purposes only and should be used as such by any prospective buyer. Produced by Swift Energies 07512 365 141
Made with Metropix ©2018







Parkstone golf course



www.hearnes.com

18 - 20 Parkstone Road, Poole, Dorset, BH15 2PG

Tel: 01202 377377 Email: poole@hearnes.com

Offices also at: BOURNEMOUTH, FERNDOWN, RINGWOOD & WIMBORNE