



MILE



Bathurst Gardens, Kensal Green NW10

£2,250 pcm

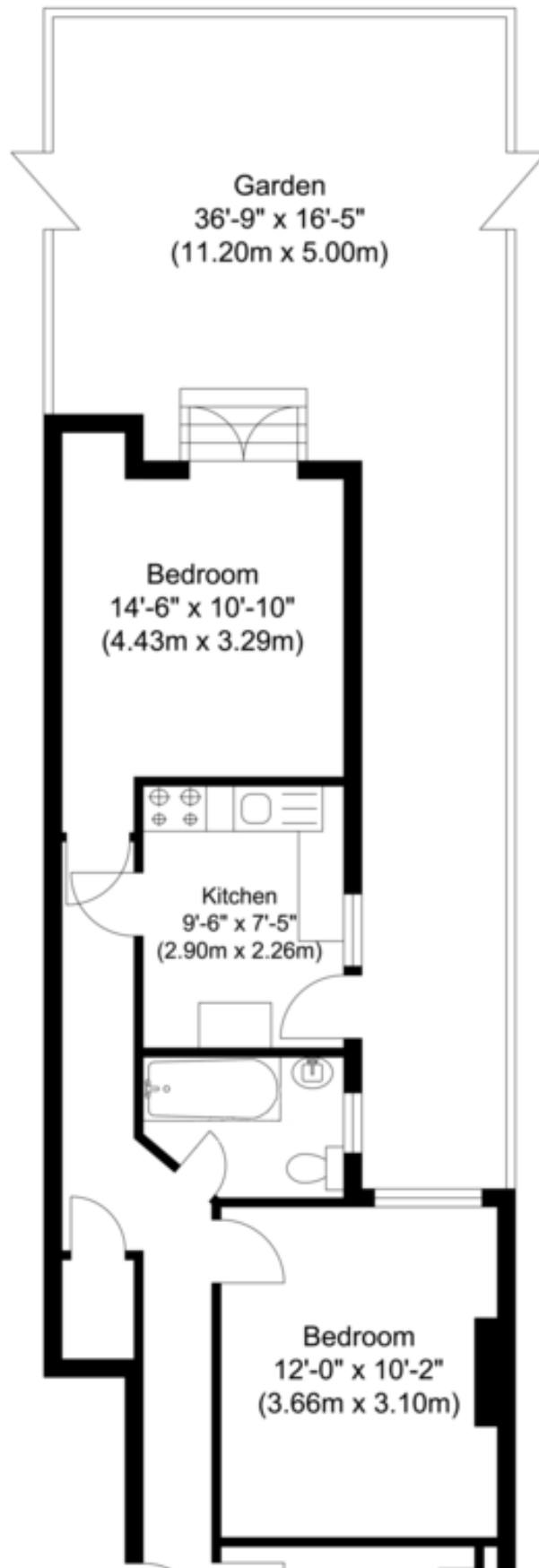
This generously proportioned, light and airy apartment boasts a lovely reception room with bay windows, two double bedrooms, a separate fully fitted kitchen and a modern three piece bathroom.

There is access from the kitchen and the back bedroom to a charming and well maintained 40ft (approx.) south facing garden. Full of character, the property also benefits from double glazed windows, carpet throughout and an abundance of light and storage space.

- **Superb garden apartment**
- **Two double bedrooms**
- **Great 40ft south facing garden**
- **Fantastic location**
- **Available 18th June**
- **Offered unfurnished**
- **Separate kitchen**
- **Double glazed windows**
- **Many original features**
- **Close to shops and transports**

TOTAL APPROX FLOOR AREA 627.75 SQ. FT. (AREA 58.32 SQ. M)

Whilst every attempt has been made to ensure the accuracy of the floor plan contained here, measurements of doors, windows, rooms and any other items are approximate and no responsibility is taken for any error, omission or mis-statement. This plan is for illustrative purposes only and should be used as such by any prospective purchaser.



MONEY LAUNDERING REGULATIONS 2003: Intending purchasers will be asked to produce identification documentation at a later stage and we would ask for your co-operation in order that there will be no delay in agreeing the sale.

General: While we endeavour to make our sales particulars fair, accurate and reliable, they are only a general guide to the property and, accordingly, if there is any point which is of particular importance to you, please contact the office and we will be pleased to check the position for you, especially if you are contemplating travelling some distance to view the property.

Measurements: These approximate room sizes are only intended as general guidance. You must verify the dimensions carefully before ordering carpets or any built-in furniture.

Services: Please note we have not tested the services or any of the equipment or appliances in this property, accordingly we strongly advise prospective buyers to commission their own survey or service reports before finalising their offer to purchase.