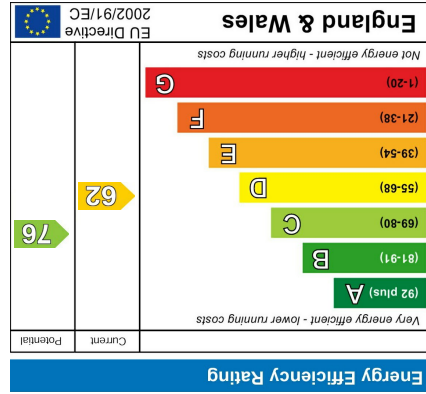
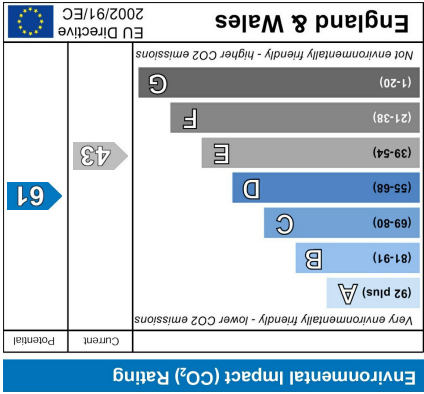
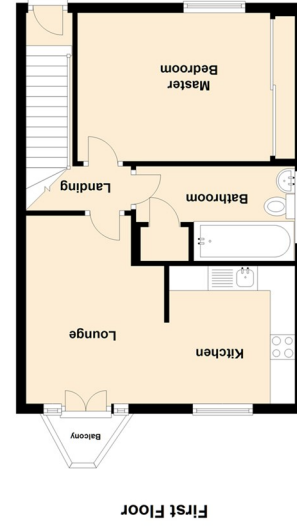


Gosforth 0191 236 2070
 Newcastle 0191 284 4050
 Forest Hall 0191 605 3134
 High Heaton 0191 270 1122
 Low Fell 0191 487 0800
 Tynemouth 0191 257 2000
 Whiteley Bay 0191 251 3000
 Property Management Centre 0191 236 2680



Lounge 12'5" x 9'1" (3.81 x 2.79)
 Master Bedroom 9'10" x 14'5" (3.01 x 4.40)
 Kitchen 9'1" x 8'3" (2.79 x 2.54)



The difference between house and home

You may download, store and use the material for your own personal use and research. You may not republish, retransmit, redistribute or otherwise make the material available to any party or make the same available on any website, online service or bulletin board of your own or of any other party or make the same available in hard copy or in any other media without the website owner's express prior written consent. The website owner's copyright must remain on all reproductions of material taken from this website.





- First Floor Flat
- No Onward Chain
- Private Entrance
- Electric Heating
- Open Plan
- One Bedroomed Home
- Fantastic Views
- Allocated Parking
- Lovely Coastline
- Viewing Essential



**** For sale by Modern Method of Auction: Starting Bids £90,000 plus Reservation Fee. £5,000 plus vat

When it comes to buying a home with a lovely coastal view, this first floor flat will certainly satisfy the needs of the buyer. The property which is compact in size and very manageable briefly comprises:- entrance lobby, landing with access to a private balcony, kitchen, bathroom W/C and master bedroom with fitted wardrobes. This property comes with the added advantage of have its own private entrance. The flat also comes with an allocated parking position and the benefit of no onward chain. Tynemouth is a wonderful place to live with award winning beaches, bar/bistros and good transport links. With a view you will never get bored with an early viewing is an absolute must.