

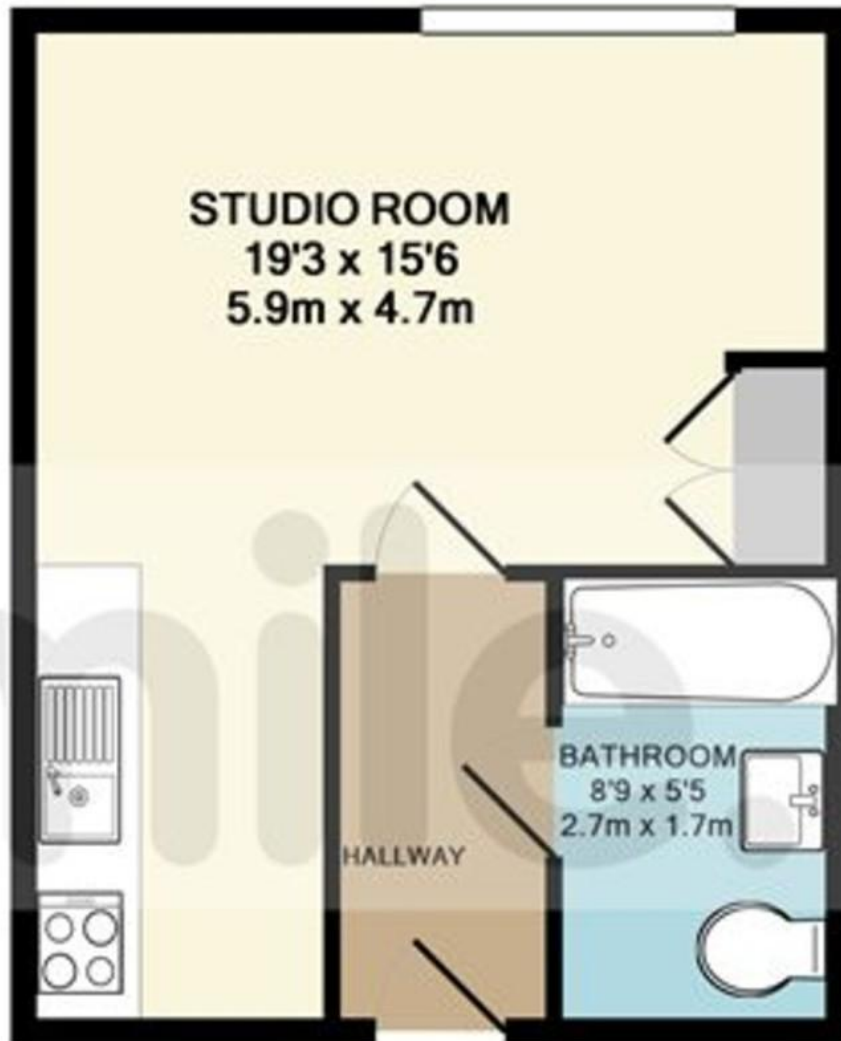


Hutton Grove, Finchley N12

£1,000 pcm

Mile is delighted to bring to the market this large fully self contained studio apartment available to the rental market. The apartments benefit from a kitchenette, shower room, built in cupboards and the PRICE INCLUDES ALL BILLS (except council tax). The property is situated on Hutton Grove off Ballards Lane in the heart of Finchley Central next door to Waitrose and within easy walking distance of transport links, local shopping and the Finchley Lido leisure complex. Available 12th September! EPC Rating D

- Self contained studio
- Excellent condition
- Includes all bills (except council tax)
- Fantastic location
- Close to transport links
- 2 min Walk to Waitrose
- Available 12th September!
- EPC Rating D



TOTAL APPROX. FLOOR AREA 299 SQ.FT. (27.8 SQ.M.)

Whilst every attempt has been made to ensure the accuracy of the floor plan contained here, measurements of doors, windows, rooms and any other items are approximate and no responsibility is taken for any error, omission, or mis-statement. This plan is for illustrative purposes only and should be used as such by any prospective purchaser. The services, systems and appliances shown have not been tested and no guarantee as to their operability or efficiency can be given

Made with Metropix ©2016

MONEY LAUNDERING REGULATIONS 2003: Intending purchasers will be asked to produce identification documentation at a later stage and we would ask for your co-operation in order that there will be no delay in agreeing the sale.

General: While we endeavour to make our sales particulars fair, accurate and reliable, they are only a general guide to the property and, accordingly, if there is any point which is of particular importance to you, please contact the office and we will be pleased to check the position for you, especially if you are contemplating travelling some distance to view the property.

Measurements: These approximate room sizes are only intended as general guidance. You must verify the dimensions carefully before ordering carpets or any built-in furniture.

Services: Please note we have not tested the services or any of the equipment or appliances in this property, accordingly we strongly advise prospective buyers to commission their own survey or service reports before finalising their offer to purchase.