



A SPACIOUS AND WELL-PRESENTED FOUR BEDROOM FAMILY HOME

East Towers, Pinner, HA5 1TL



A SPACIOUS AND WELL-PRESENTED FOUR BEDROOM FAMILY HOME

East Towers, Pinner, HA5 1TL

- ENTRANCE HALL • SITTING ROOM
- KITCHEN /BREAKFAST ROOM • DINING ROOM
- SHOWER ROOM • GUEST W/C
- CONSERVATORY • MASTER BEDROOM
- THREE FUTHER BEDROOMS • FAMILY BATHROOM
- LOFT ROOM • ATTRACTIVE REAR GARDEN
- OFF STREET PARKING VIA AN OWN DRIVE

Description

Presenting a light and spacious four bedroom, two bathroom semi-detached family home offering versatile living accommodation throughout.

To the ground floor is an entrance hall, a double sitting room with access to the conservatory, a modern fitted kitchen/breakfast room, a guest w/c, front aspect dining room and a shower room.

To the first floor is a master bedroom, three further bedrooms and a family bathroom. Additional benefits to this wonderful family home include a loft room, off street parking via an own drive and an attractive rear garden.





Location

Situated in a convenient location Pinner and Eastcote's amenities can be found within close proximity offering a range of boutique shops, restaurants, coffee houses and popular supermarkets.

Transport facilities include local bus links and the Metropolitan and Piccadilly Line and Eastcote station with the Metropolitan Line at Pinner station, both these lines provide a fast and frequent service into the heart of Central London and beyond.

Cannon Lane and Pinner High School are close by along with children's parks/playgrounds and recreational facilities.

Additional Information

Guide Price: Price on Application

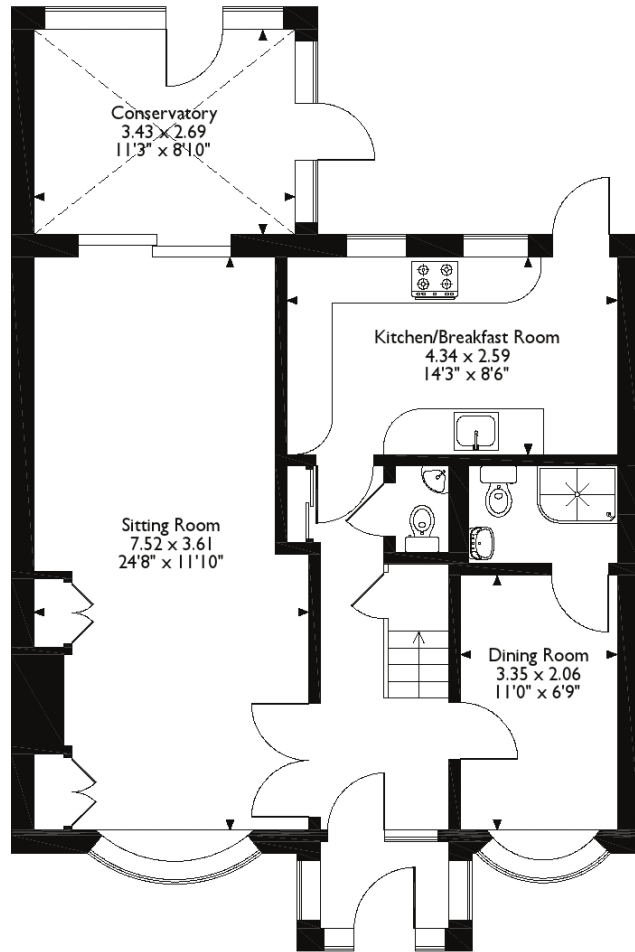
Tenure: Freehold

Local Authority: London Borough of Harrow

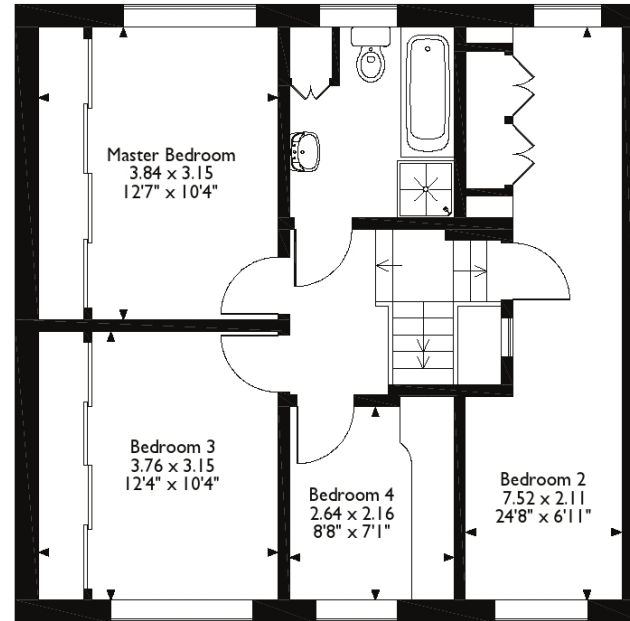
Energy Efficiency Rating: Band D



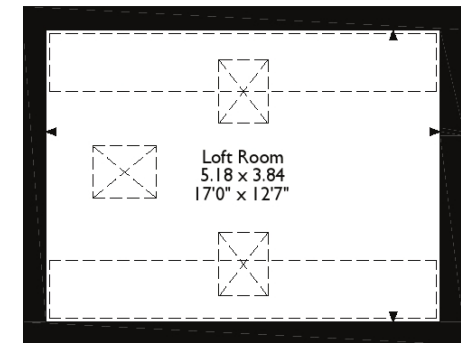
East Towers, Pinner
 Approximate Gross Internal Area
 148 M²/1588 Sq Ft



Ground Floor



First Floor



Loft



1 High Street, Pinner, Middlesex HA5 5PJ
 Tel: 0208 866 8083 sarah.hows@robsonswb.com
www.robsonswb.com

www.
 the
 londonoffice.co.uk
 40 ST JAMES'S PLACE SW1