



HOBARTS
estate agents • surveyors • valuers

FLAT D, 43 FERME PARK ROAD, STROUD
GREEN, LONDON, N4 4EB
RENT £1,390 PCM





Property Summary

Lovely one bedroom, top floor apartment in an impressive Victorian house. The property benefits from a double bedroom, spacious, light and airy reception room with study area and room for a dining table, modern bathroom and separate kitchen. Also features wooden floors, splendid views and additional storage in hallway and staircase.

Location

Neighbouring both Stroud Green and Crouch End that has an array of everyday amenities alongside boutique shops and independent coffee shops all adding to the enjoyment of living in the area. Finsbury Park and Parkland Walk are both close by and make for a great stroll all year round.

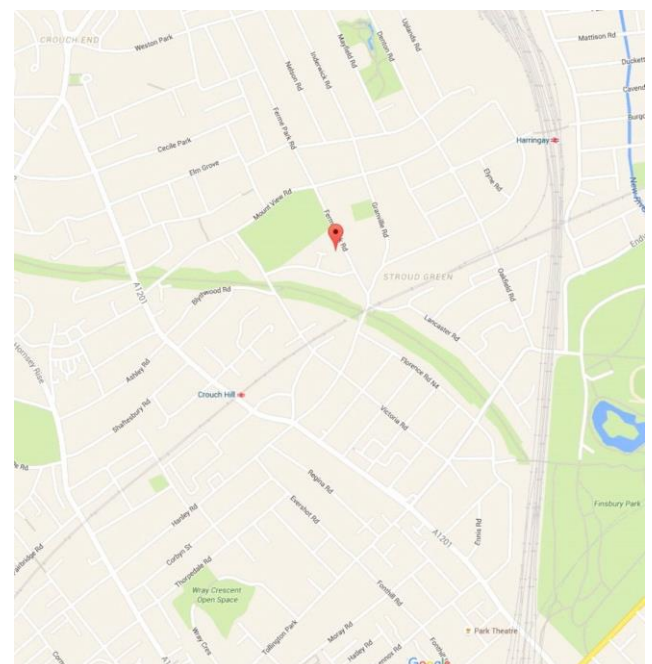
Transport;

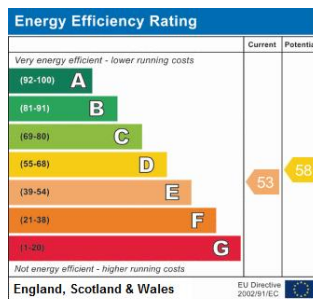
Crouch Hill Overground Station offers quick routes to Upper Holloway and Gospel Oak.

Harringay National Rail Station is within walking distance and is a quick route to Kings Cross and to Moorgate.

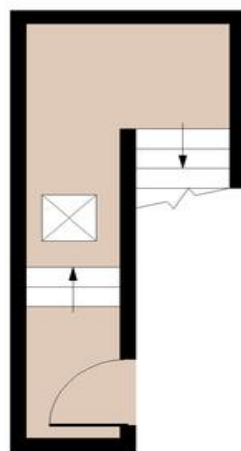
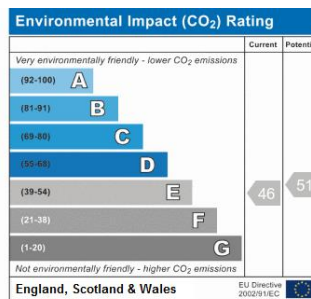
Finsbury Park National Rail and Underground Station on the Piccadilly Line and Victoria Line will take you to The West End, Central London and furt

- One double bedroom
- Spacious reception room with study area
- Separate fully fitted kitchen

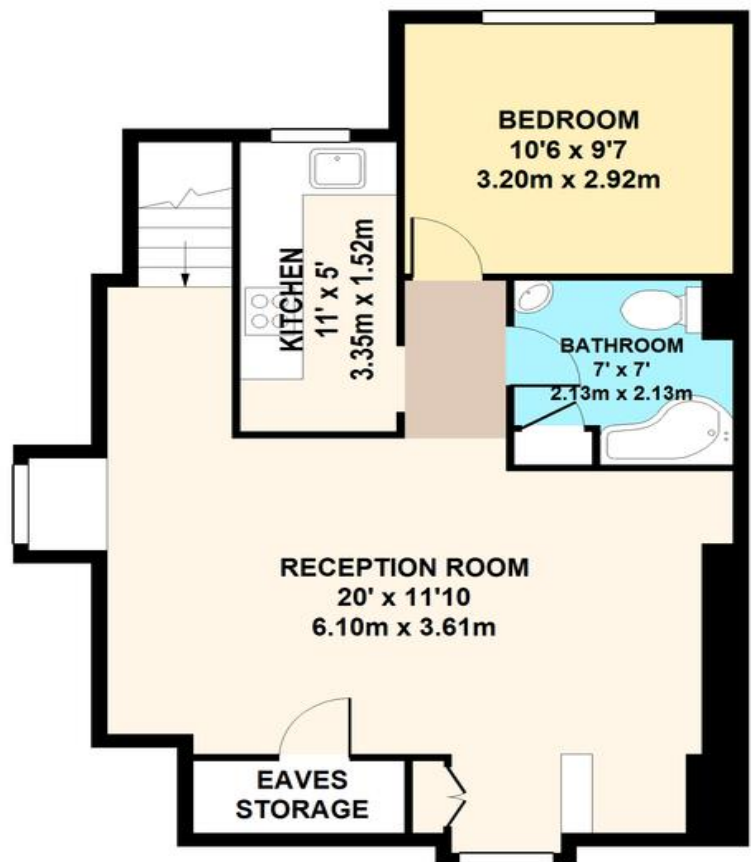




Reference:
Ferme Park Road



1ST FLOOR
ENTRANCE



2ND FLOOR

FERME PARK ROAD
TOTAL APPROX. FLOOR AREA 607 SQ.FT. (56.39 SQ.M.)

Whilst every attempt has been made to ensure the accuracy of the floor plan contained here, measurements of doors, windows, rooms and any other items are approximate and no responsibility is taken for any error, omission, or mis-statement. This plan is for illustrative purposes only and should be used as such by any prospective purchaser. The services, systems and appliances shown have not been tested and no guarantee as to their operability or efficiency can be given