



CHISWELL & CO
RESIDENTIAL SALES & LETTINGS

FLAT 11 THOMAS COURT, BOURNEMOUTH, BH8 8LD
ASKING PRICE OF £215,000





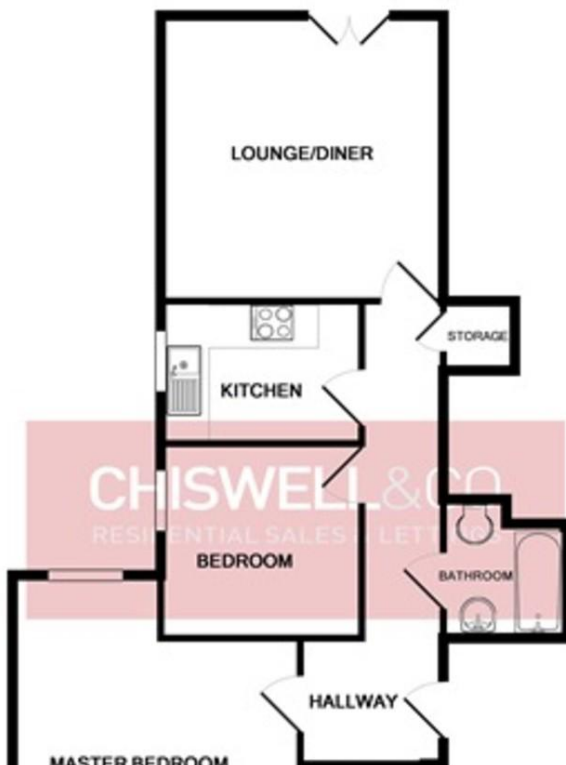
Located within a purpose built block on the second floor and to the rear of the block offering a wooded outlook and boasts 2 double bedrooms, with en suite to master. Also there is a separate living room, fitted kitchen, family bathroom and allocated off road parking.

COMMUNAL ENTRANCE Enter via secure communal entrance into communal hallway with stairs and access to all floors

HALLWAY Enter into main hall with smooth set coved ceiling with ceiling light point, double panel radiator, wall mounted telephone point, storage cupboard, power points, carpet and access to all principle rooms.

LIVING ROOM 3.95m X 4.0m Smooth set coved ceiling with ceiling light point, double glazed doors to 'Juliet balcony' to rear aspect, double panel radiator, television point, power points, telephone point and carpet flooring.

KITCHEN 2.87m x 2.08m Double glazed window to side aspect, a range of matching wall and base units with rolled work surfaces over



%epcGraph_c_1_304%