



MARTIN&CO

London Road Chesterton

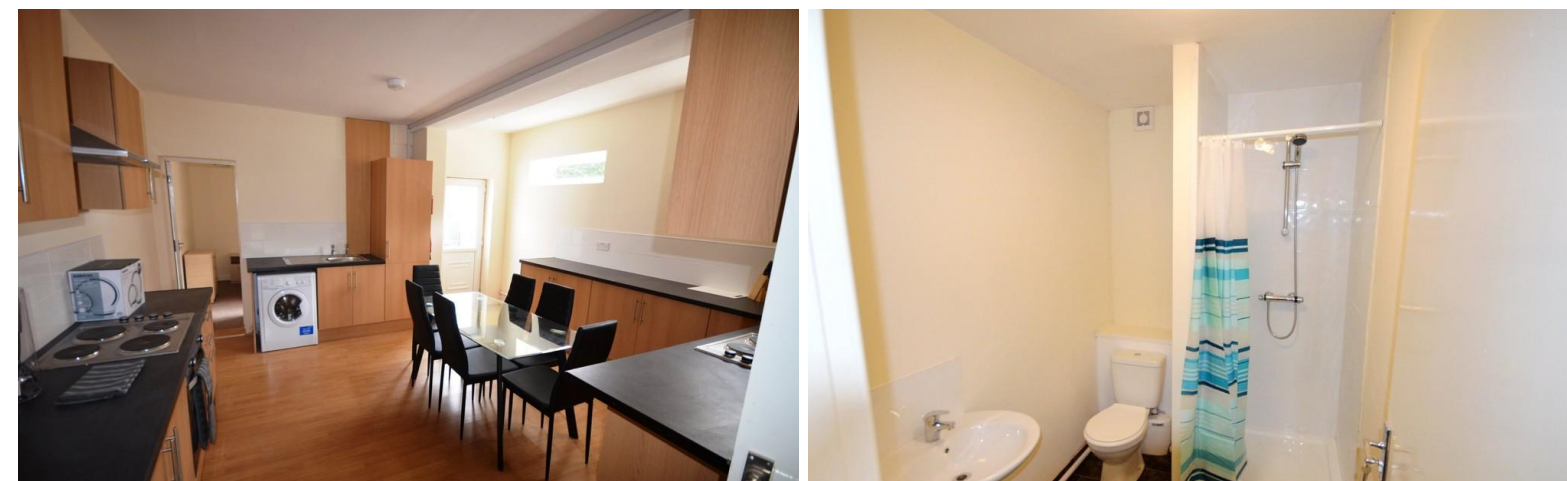
- Single Bedroom
- Furnished and Including Bills
- Communal Lounge
- Communal Kitchen Diner

£65 pw Fees apply

1 Bedroom

Furnished

EPC Rating '23'



57 Merrial Street
Newcastle under Lyme
Staffordshire
ST5 2AE

www.martinco.com

Agents Note: Whilst every care has been taken to prepare these sales particulars, they are for guidance purposes only. All measurements are approximate are for general guidance purposes only and whilst every care has been taken to ensure their accuracy, they should not be relied upon and potential buyers are advised to recheck the measurements



INNER HALL

Door to stair case, doors to:-

DOWNSTAIRS SHOWER ROOM

Comprising low level WC, pedestal wash hand basin, shower with tiled walls, extractor fan, chrome effect heated towel rail.

COMMUNAL KITCHEN DINER

15' 0" x 13' 3" (4.585m x 4.055m) Double glazed door to rear elevation, two windows to side elevation, comprising a range of wall, base and drawer units with roll top work surface over, incorporating stainless steel sink and drainer, tiled splash back, stainless electric hob with stainless steel extractor canopy over, built-in oven.

DOWNSTAIRS BEDROOM TWO

11' 0" x 6' 9" (3.360m x 2.068m) A single bedroom with double glazed windows to side elevation, radiator.

FIRST FLOOR LANDING

Storage cupboard, radiator, doors to:-

UPSTAIRS BATHROOM

Double glazed window to side elevation, comprising low level WC, pedestal wash hand basin, panelled bath, part tiled walls, heated towel rail.

EXTERNALLY

To the rear is a paved courtyard enclosed by brick wall and gate getting access to the rear.

Property Description

PROPERTY SUMMARY

Martin & Co offer for rent this single room in a 6 bed end terraced house with bills included and furnished, situated in the popular village location of Chesterton within a short drive of Newcastle town centre, North Staffs Hospital also offering easy access to Keele university, Hanley Town Centre and all major road links. Comprising entrance hall, communal lounge, inner hallway, communal kitchen/diner, two down stairs single bedrooms, downstairs shower room, first floor landing, four double bedrooms and a good sized bathroom .To the rear is a paved patio courtyard. Early viewing is highly recommend.

ENTRANCE HALL

Double glazed door to front elevation.

COMMUNAL LOUNGE

15' 7" x 13' 11" (4.756m x 4.252m) Double glazed windows to front and rear elevation, cupboard housing electric meter, radiator.

