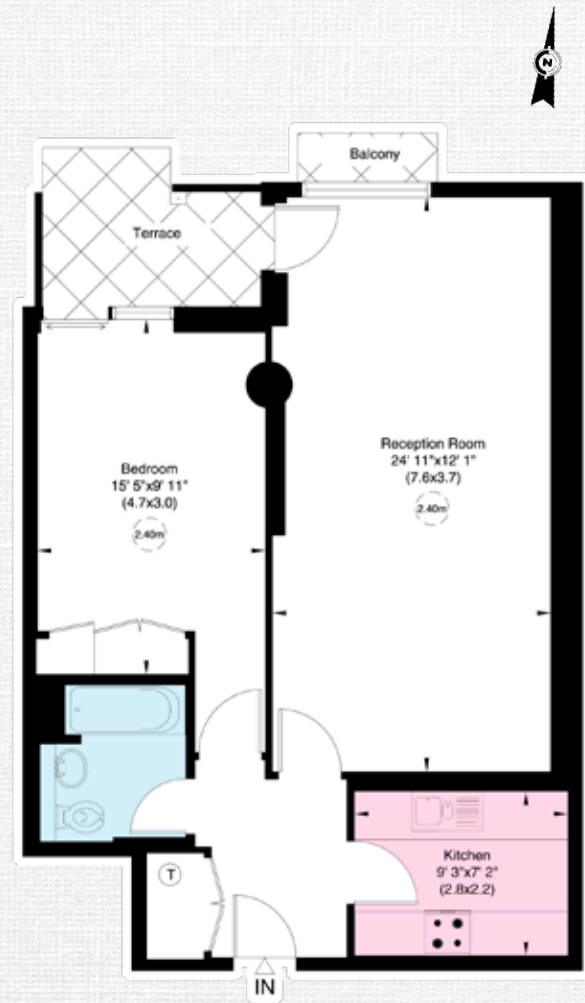




POINT WEST, CROMWELL ROAD, SW7



Eighth Floor

APPROXIMATE GROSS INTERNAL AREA  
61 sq m - 655 sq ft



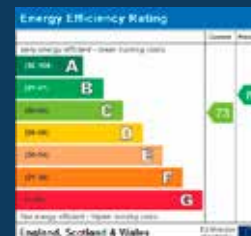
A WELL PRESENTED, BRIGHT AND AIRY ONE BEDROOM APARTMENT IN A POPULAR SOUTH KENSINGTON DEVELOPMENT.

Located on the 8th floor (with lift) the property extends to approximately 655sq/ft and benefits from 24 hr portorage and an underground parking space. The development also has access to a Harbour Club fitness centre with swimming pool although membership is by separate negotiation. The apartments in Point West are within easy walking distance of a wide variety of shops, restaurants and cafes on the Gloucester Road as well as the excellent transport links.



TENURE | Leasehold with 228 years remaining  
PRICE | £675,000 STC  
SERVICE CHARGE | Approximately £1,180.32 per annum  
GROUND RENT | Peppercorn  
Secure parking available.

These details have been prepared for general guidance only and should not be relied upon by prospective purchaser/tenants who before proceeding must check and otherwise satisfy themselves as to the property and the nature, state and availability of any facility or service.  
358977



**NVP**  
NICOLAS VAN PATRICK  
INCORPORATING  
HOBART SLATER

6-8 MONPELIER STREET,  
LONDON SW7 1EZ  
+44 (0)20 7581 8277  
sales@nicolasvanpatrick.com  
www.nicolasvanpatrick.com