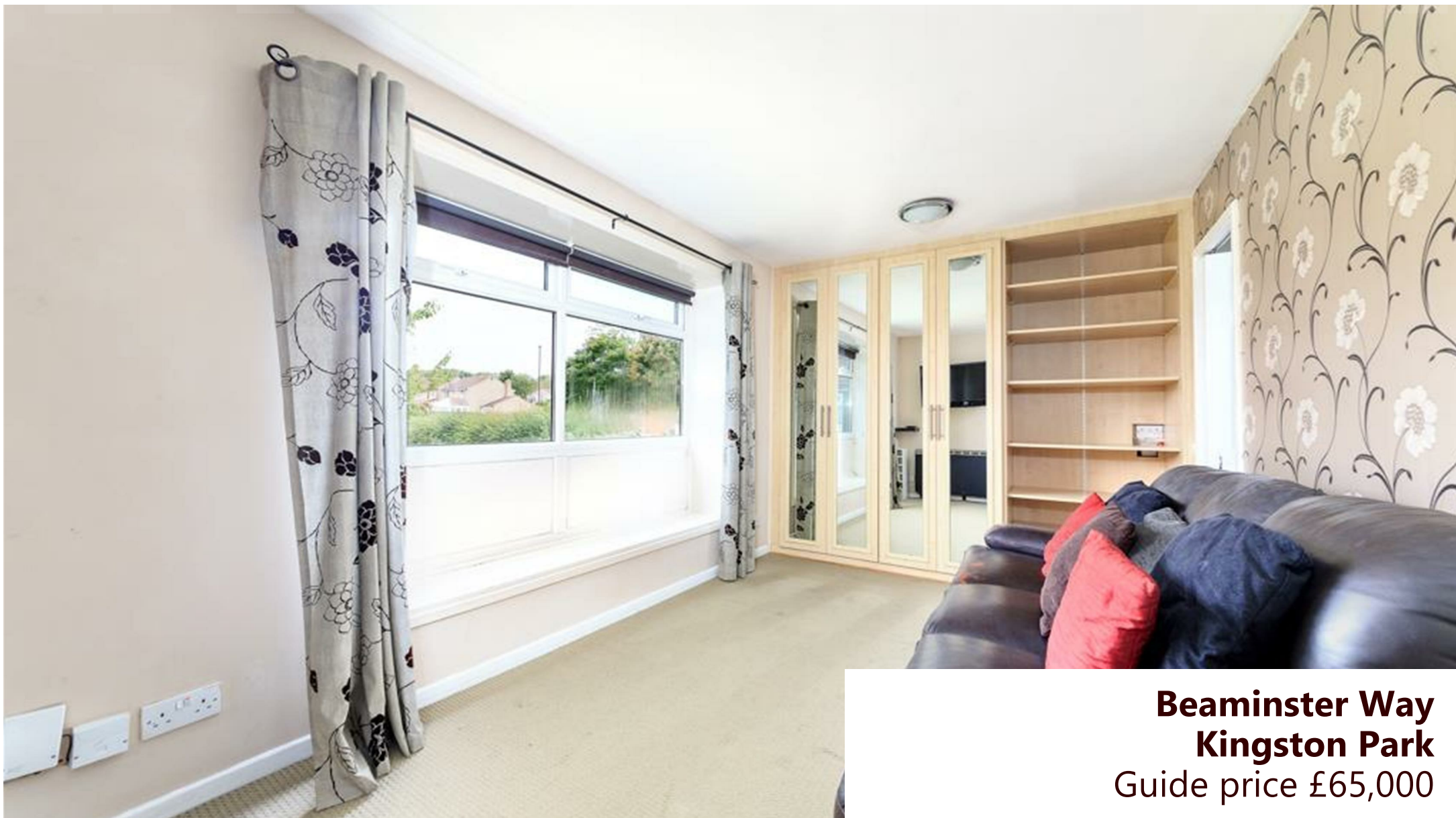


Pat Robson 

Contact the Gosforth Branch
2 Hawthorn Road, Gosforth, Newcastle Upon Tyne, NE3 4DE
Tel: 01912 844349 | gosforth@patrobson.com



**Beaminster Way
Kingston Park**
Guide price £65,000

****Investment Opportunity**** 7.1% Gross Yield ****First Floor Studio Apartment**** Superbly presented and well positioned for access to local amenities, this modernised first floor studio apartment generates a rent of £415 per calendar month and is let until September 2019. The property includes a Living Room / Bedroom with built in wardrobes enclosing a retractable three quarter bed, a stylish modern Kitchen, an Inner Lobby with built-in wardrobes and a well presented Bathroom. The property further benefits from electric heating and double glazing.

Communal Entrance

Studio Room

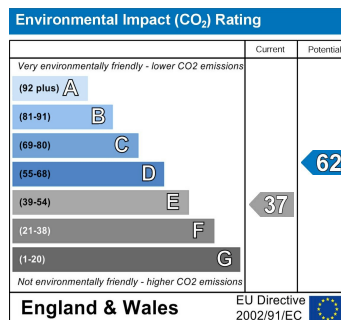
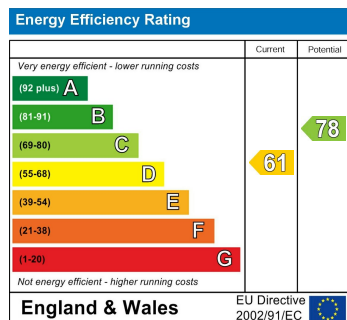
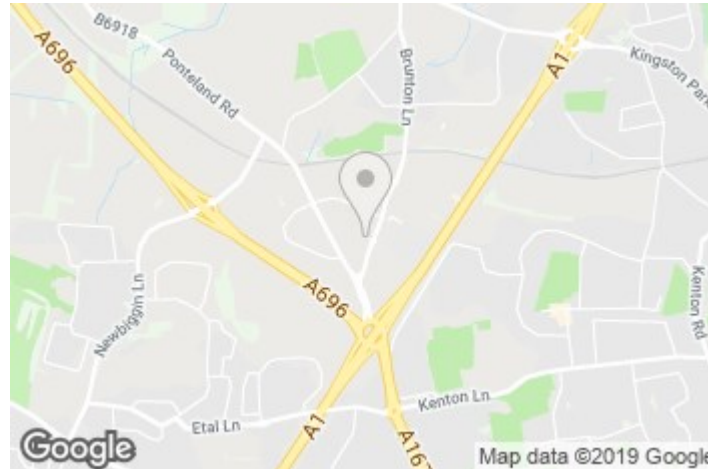
17'5" x 8'9" (5.31 x 2.66)

Kitchen

6'8" x 6'8" (2.04 x 2.04)

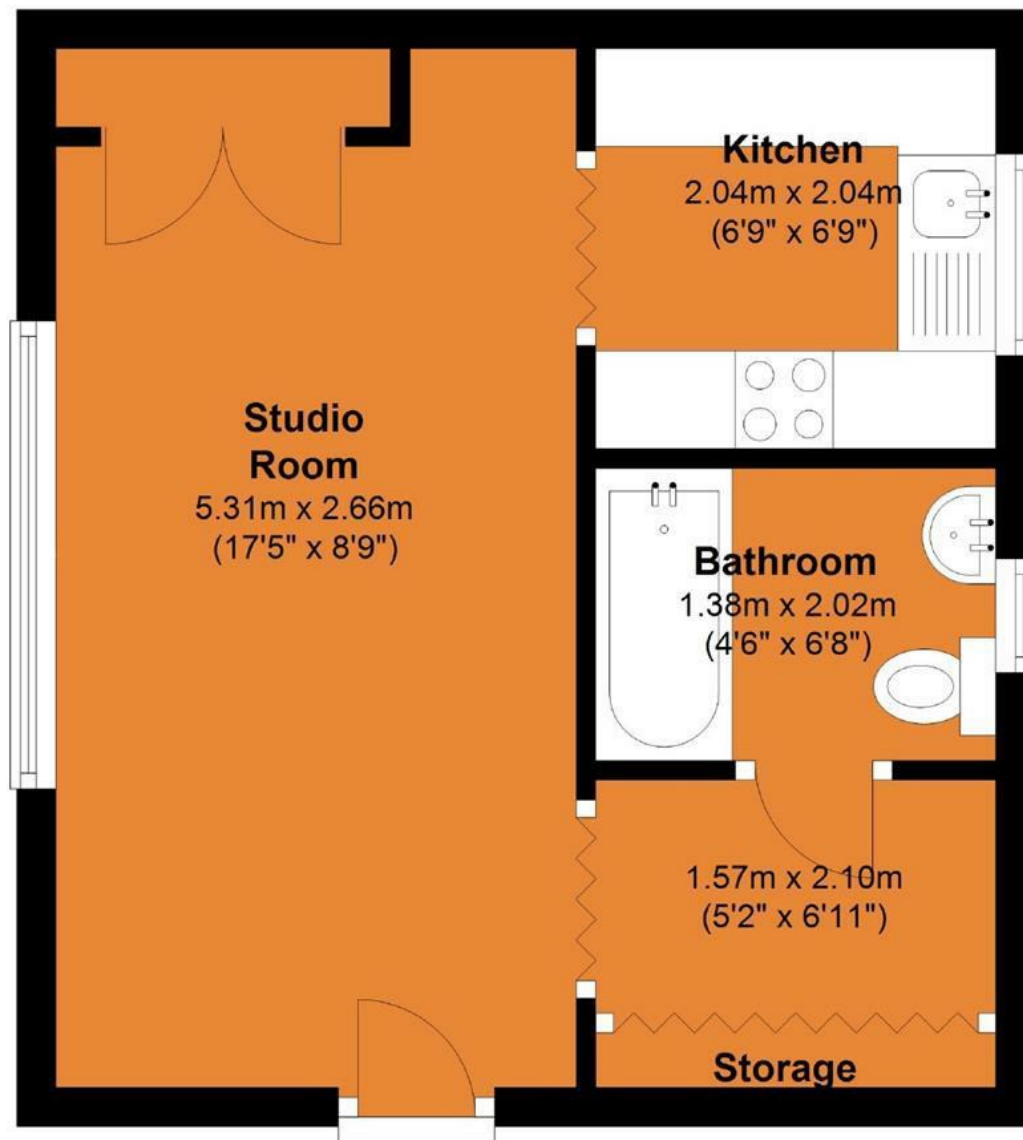
Bathroom

4'6" x 6'8" (1.38 x 2.02)



First Floor Apartment

Approx. 25.3 sq. metres (272.3 sq. feet)



Total area: approx. 25.3 sq. metres (272.3 sq. feet)

Arrange a viewing on our website - www.patrobson.com or call 01912 844349

