



ANGLESEY

Guide Price £1,375,000

United
Kingdom

Sotheby's
INTERNATIONAL REALTY

Point Lynas Lighthouse

ANGLESEY

An attractive Grade II listed period lighthouse set in 17 acres of headland and including three cottages. Point Lynas Lighthouse sits on a rocky headland on the North coast of Anglesey with dramatic views over the Irish sea.

The Property

The lighthouse consists of a lighthouse tower, the Head Keepers house and two Keepers cottages all surrounded by a high castellated wall and accessed through an impressive stone arched gateway. The current owners have lovingly restored the lighthouse and retained many of the original features which now blend with a range of modern facilities. From the Keepers cottages and the headland there are stunning views across the Irish sea and along the Anglesey or North Wales coasts. On clear days it is possible to see Ireland, the Isle of Man, Dumfries and Galloway, the lake district and the Clwydian range in North Wales.



The Lighthouse has a fascinating history as early as 1766, the need was felt for a station on Anglesea where ships making for Liverpool could pick up pilots. The lighthouse is now automated and the lens room is connected to the seaward side of the building. The property provides flexible accommodation with up to 9 bedrooms if required and could (stpp) provide a rental income from holiday lets.

Location

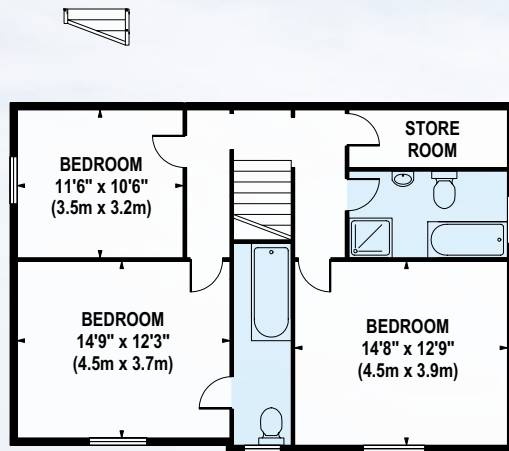
The area provides a wealth of outdoor activities which includes birdwatching, fishing, walking, cycling, horse riding, kayaking, scuba diving and sailing. The area also provides some of the best beaches in the UK and some great places to dine out.

Property Information

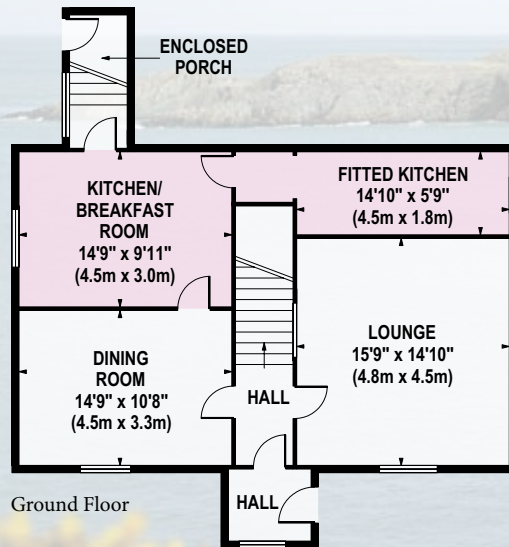
Postcode | LL68 9LT

Viewing | By appointment with United Kingdom Sotheby's International Realty

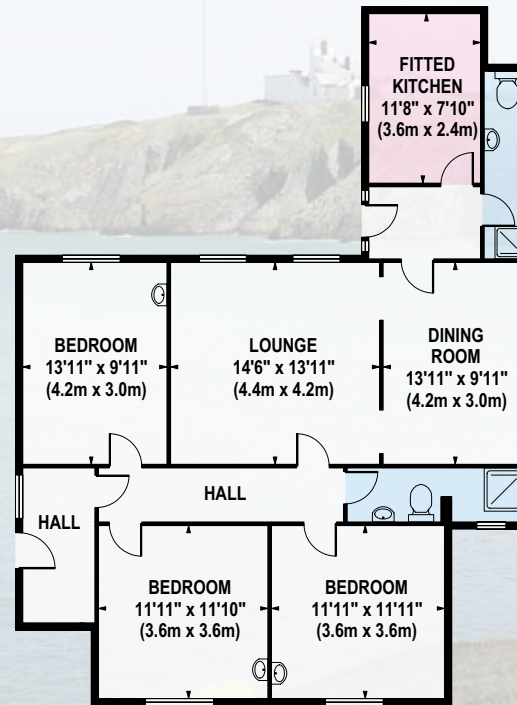




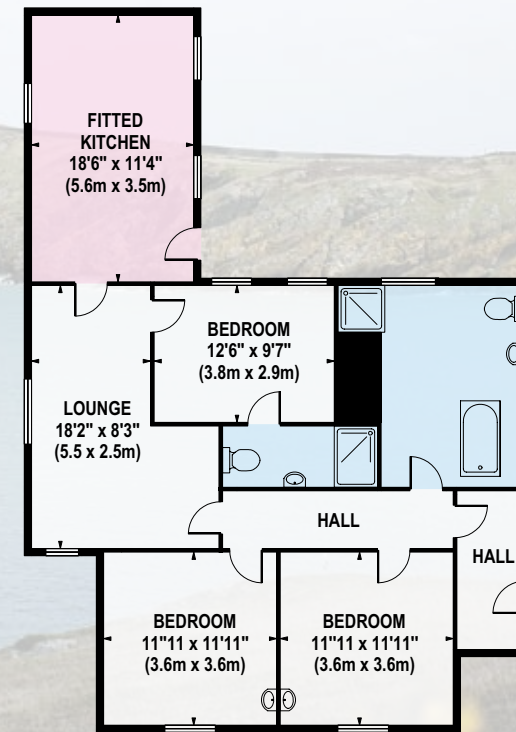
First Floor



Ground Floor



East Cottage

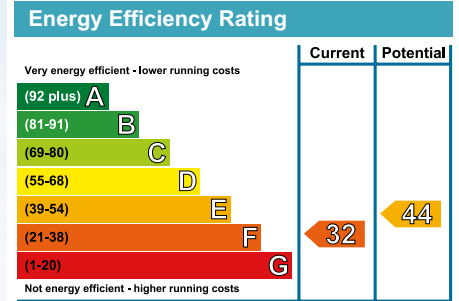


West Cottage

Approximate Gross Internal Area
 Main House: 1591 sq ft / 148 sq m
 East Cottage: 1138 sq ft / 106 sq m
 West Cottage: 1162 sq ft / 108 sq m

Whilst every attempt has been made to ensure the accuracy of the floorplan contained here, measurements of doors, windows and rooms are approximate and no responsibility is taken for any error omission or mis-statement. These plans are for representation purposes only and should be used as such by any prospective purchaser / tenant. The services, systems and appliances listed in this specification have not been tested and no guarantee as to their operating ability or their efficiency can be given

© www.squarefeetuk.com



United Kingdom Sotheby's International Realty
 38 High Street, Cobham, Surrey, KT11 3EB
 T: +44 (0)1932 860 537 E: cobham@sothebysrealty.co.uk

United Kingdom Sotheby's International Realty give notice to anyone reading these particulars that: i) the particulars do not constitute part of an offer or contract; ii) this material is protected by the laws of copyright. The owner of the copyright is United Kingdom Sotheby's International Realty. This property sheet forms part of our database, and is protected by the database rights and copyrights laws. No unauthorised copying or distribution without permission; iii) the particulars including text, photographs and plans are for the guidance only of prospective purchasers and must not be relied upon as statements of fact; iv) the descriptions provided therein represent the opinion of the author and whilst given in good faith should not be construed as statements of fact; v) nothing in these particulars shall be deemed a statement that the property is in good condition or otherwise nor that any services or facilities are in good working order; vi) all measurements are approximate. Sotheby's International Realty and the Sotheby's International Realty logo are registered (or unregistered) service marks used with permission.

United Kingdom | Sotheby's
 INTERNATIONAL REALTY