



**NET**  
**LETTINGS**  
**.COM**

**Flat 501, Simko House, Copperfield Road**

Mile End, London, E3 4RR

- Secure Private Development
- Two Double Bedrooms
- Open Plan Kitchen/Lounge
- Fully Integrated Kitchen

**£2,300 pcm Fees Apply**





## Property Description

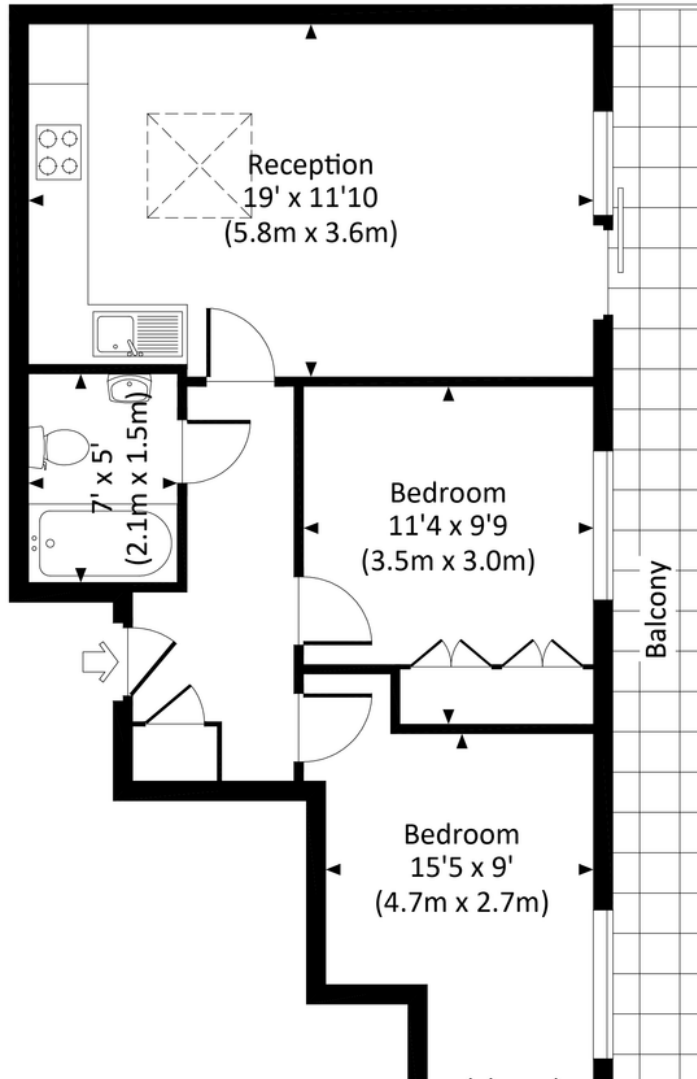
%full\_description\_title[b,br,#0a3646]\_dim[i]%





# SIMKO HOUSE, COPPERFIELD ROAD, E3

Approx. gross internal area  
560 Sq Ft. / 52.0 Sq M.



## Viewings

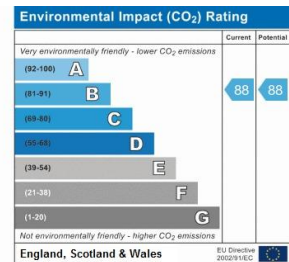
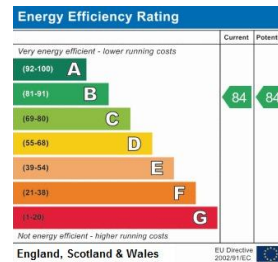
By Appointment only

## Council Tax Band

Band D

## Local Authority

Tower Hamlets London Borough Council



## Registered Office

Suite C, 36-40 Copperfield Road, London,  
E3 4RR /08050057

Find us on   

[www.netlettings.com](http://www.netlettings.com)

[management@netlettings.com](mailto:management@netlettings.com)

020 8981 5551

[mydeposits.co.uk](http://mydeposits.co.uk)



**rightmove**  
find your happy

**Zoopla.co.uk** 



Agents Note: Whilst every care has been taken to prepare these particulars, they are for guidance purposes only. All measurements are approximate and are for general guidance purposes only and whilst every care has been taken to ensure their accuracy, they should not be relied upon and potential tenants are advised to recheck the measurements.