

17 Lower Oldfield Park, BA2 3HL.



At a glance:

- Light Studio Room
- Modern Bathroom
- Fitted Kitchen
- Fantastic Location
- 1 Mile from Southgate city centre

Fantastic opportunity for a first time or investment buyer with a potential rental of £650.00 equating to 5.2% yield. First floor bedsit with great light studio room, modern bathroom with shower over the bath and fitted kitchen. Situated within a fantastic location under 1 mile to the city centre (Southgate)



Energy Efficiency Rating		
	Current	Potential
Very energy efficient - lower running costs		
(92-100) A		
(81-91) B		
(69-80) C		
(55-68) D		
(39-54) E	53	53
(21-38) F		
(1-20) G		
Not energy efficient - higher running costs		
England, Scotland & Wales		EU Directive 2002/91/EC

17 Lower Oldfield Park, BA2 3HL.



Full Description:

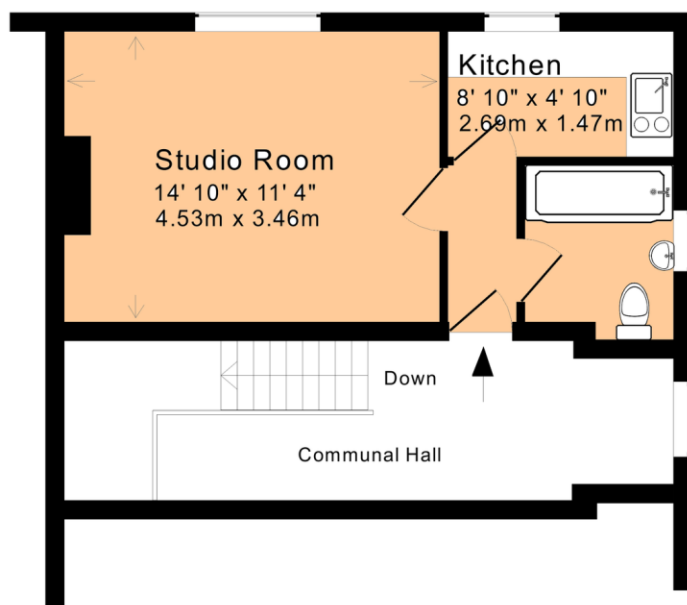
This bedsit is situated on the first floor of a period style building. Location is key situated in a excellent position just 1 mile from Southgate in the city centre and 0.5 mile from Moorland Road which boasts an array of shops, cafes, banks and also benefits from a Sainsbury local.

The bedsit opens onto a hallway which leads to an open plan sitting/bedroom area with feature fireplace. The bathroom is fitted with a modern white suite, with shower over the bath and a light kitchen with white fitted units and plumbing for washing a machine.

This is a great opportunity for a first time to step onto the property ladder or as an investment purchase.

LOCATION The apartment boasts enviable, and walkable, distance to the City of Bath and Bath Spa Railway station a huge advantage to owners.

Lower Oldfield Park is conveniently placed, to local amenities with numerous local shops in nearby Moorland Road. Sainsbury's supermarket at Green Park is also within walking distance.



First Floor

Approx. Gross Internal Floor Area: 280 Sq. Ft. / 26 Sq. M
Includes Conservatories and attached Garages

For indicative purposes only.

Copyright Jemesis Ltd 2018 0398