



01263 512026
arnoldskeys.com



High Street . Mundesley . NR11 8JW

£80,000

IDEAL PROPERTY FOR FIRST TIME BUYERS OR INVESTORS. CENTRALLY LOCATED.

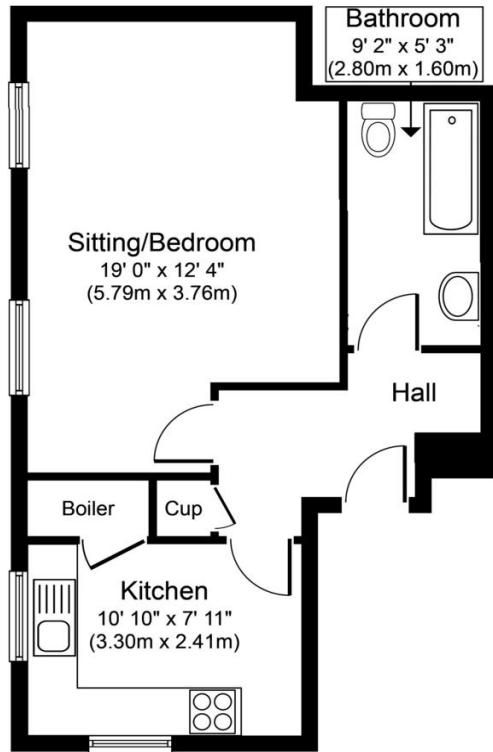
Northfield House is located in the heart of Mundesley village with the front of the building overlooking the bowling green and the first floor offering distant sea views. Having undergone refurbishment, each apartment is unique and individually laid out to allow spacious and light accommodation. This ground floor studio apartment comprises of a kitchen, large lounge / bedroom, and modern bathroom as well as a storage space outside. Ideal first-time homes or second properties these apartments are a short walk away from the village centre where you can find an array of shops and amenities including a butchers, hairdressers, pharmacy, public houses and beautiful blue flag sandy beaches. Being sold with a brand new 99-year lease with a service charge of £400 and ground rent of £100. allowing holiday lets and one well behaved pet viewing is highly advised to ensure you don't miss out!

Mundesley is located 9 miles from Cromer and is renowned for its Blue Flag sandy beach. A variety of shops including a florist, chemist, butchers and boutiques make up the village centre along with the popular Golf Course and Public Houses. Benefitting from a regular bus route which services Cromer, North Walsham, Sheringham and the surrounding villages this quaint village situated on the North Norfolk Coast is a real gem.



Arnolds | Keys

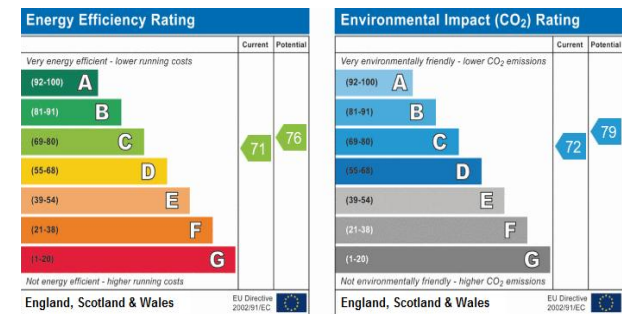




Approximate Floor Area
436 sq. ft.
(40.5 sq. m.)

Whilst every attempt has been made to ensure the accuracy of the floor plan contained here, measurements of doors, windows, rooms and any other items are approximate and no responsibility is taken for any error, omission, or mis-statement. This plan is for illustrative purposes only and should be used as such by any prospective purchaser or tenant. The services, systems and appliances shown have not been tested and no guarantee as to their operability or efficiency can be given.

Agents Note: Whilst every care has been taken to prepare these sales particulars, they are for guidance purposes only. All measurements are approximate and for general guidance purposes only and whilst every care has been taken to ensure their accuracy, they should not be relied upon and potential buyers are advised to recheck the measurements.



For details or to book a viewing please contact our Cromer office: