



STAGS

Lower Ashridge
Farm

Lower Ashridge Farm

Harberton, TQ9 6EW

Totnes 2 miles A38 5 miles Plymouth 22 miles

- Four reception rooms
- Four bedrooms
- Master ensuite dressing room and bathroom
- Family bathroom
- Attractive gardens
- Detached studio
- Rural setting and views

Guide price £695,000

SITUATION

Lower Ashridge Farm is situated within a rural setting near the hamlet of Tigley and the village of Harberton. The property offers good access to the A385 which leads to Totnes and the A38. The bustling medieval market town of Totnes has a mainline railway station giving direct access to London Paddington. Schooling in the area is excellent with selection of primary and secondary education.

DESCRIPTION

Lower Ashridge Farm is an attractive and spacious period farmhouse set within approximately 0.3 acres which is situated at the end of a no-through lane. The house incorporates 4 bedrooms, 4 reception rooms along with a wealth of character features.

To the outside of the property there is a detached studio/office. The gardens are mainly laid to lawn with far reaching views.

There is a new house being built in what was part of the gardens to this property which the current owners will be moving into. Devon banks have been created between the two properties.



A charming and spacious period farmhouse set within approx 0.3 acres which incorporates a detached studio





ACCOMMODATION

Leading into the entrance hallway is an attractive stone flagged floor with exposed wall timbers and staircase to first floor. The main reception rooms include an attractive living room and dining room with exposed timbers and open fireplaces with wood burning stoves.

There is a smartly fitted kitchen with Aga range. Hallway leading to inner lobby and utility room. Snug with open fireplace and a spacious conservatory with open views to the rear. On the first floor, there are four bedrooms including a master bedroom with dressing room, ensuite bathroom and a family bathroom.

OUTSIDE

The house is set in approximately 0.3 acres. The gardens are attractively laid out and enjoy views across open countryside. There is a detached studio with light and power. Parking is on hard standing for approximately 4/5 cars, with further scope for the creation of a detached garage subject to any necessary planning consents. There is a large stone patio to the rear of the property which has access from the conservatory and snug enjoying some countryside views.

SERVICES

Mains water, private drainage, oil fired central heating and mains electricity.

LOCAL AUTHORITY

South Hams District Council, Follaton House, Plymouth Road, Totnes, Devon, TQ9 5NE. Tel: 01803 861234. E-mail: customer.services@southhams.gov.uk.

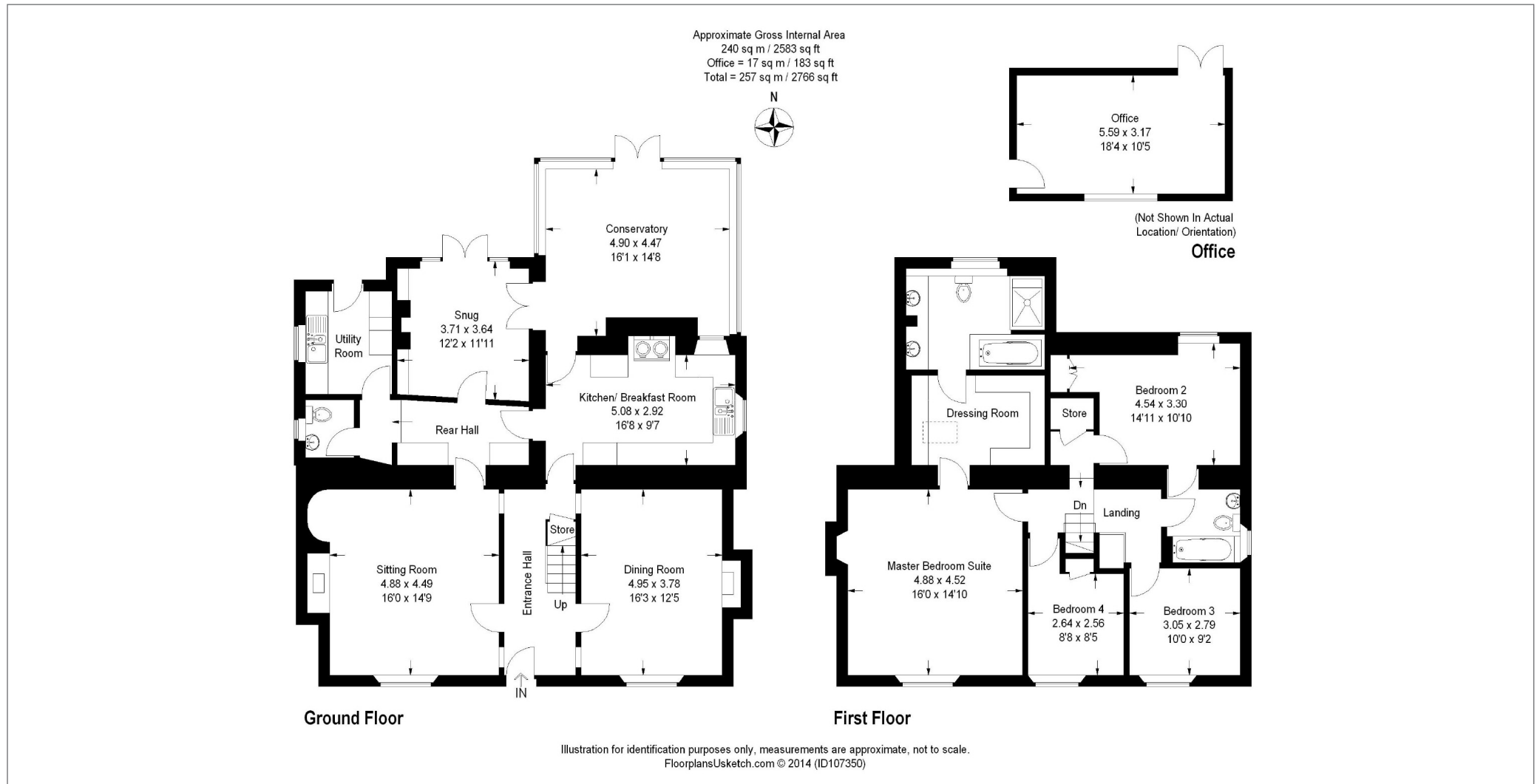
VIEWING

Strictly by prior appointment with Stags Totnes property office on 01803 865454

DIRECTIONS

From Totnes proceed on the A385 Ashburton Road. Upon reaching Dartington continue on the A385 towards the A38. After approximately 3 miles and upon reaching Tigley Cross, turn left towards Harberton. Proceed over the railway bridge and take the first left hand turn. Proceed down this lane and the house can be located directly at the end.





These particulars are a guide only and should not be relied upon for any purpose.



Stags
 The Granary, Coronation Road, Totnes, Devon, TQ9 5GN
 Tel: 01803 865454
 totnes@stags.co.uk

